

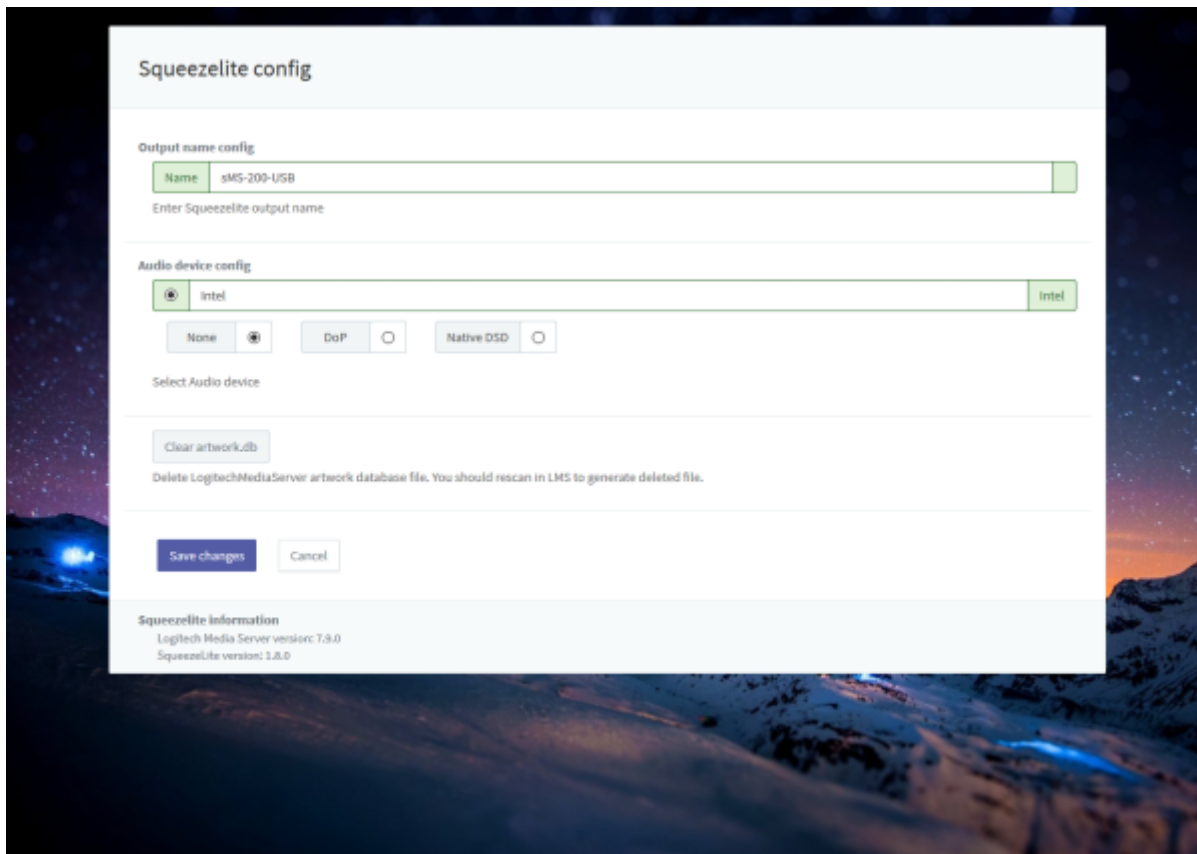
# Squeezelite / Logitech Media Server

Squeezelite Logitech Media Server(LMS)

Tidal, Qobuz, internet radio

Logitech Media Server

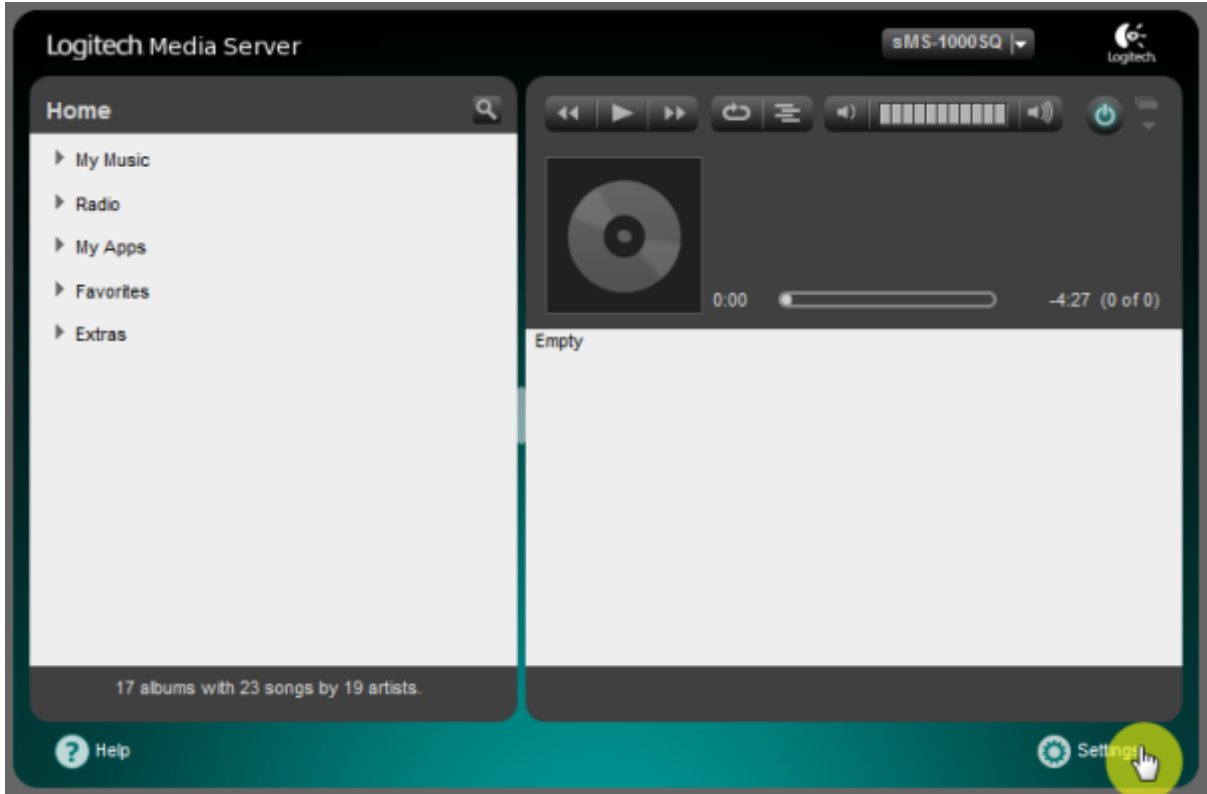
Logitech Media Server, LMS



- **Name:** LMS
- **Audio device config:** USB DAC
- **None:** PCM
- **DoP:** DSD DoP
- **Native DSD:** Native DSD 가 DAC Native DSD
- **Clear artwork.db:** LMS LMS rescan

LMS rescan

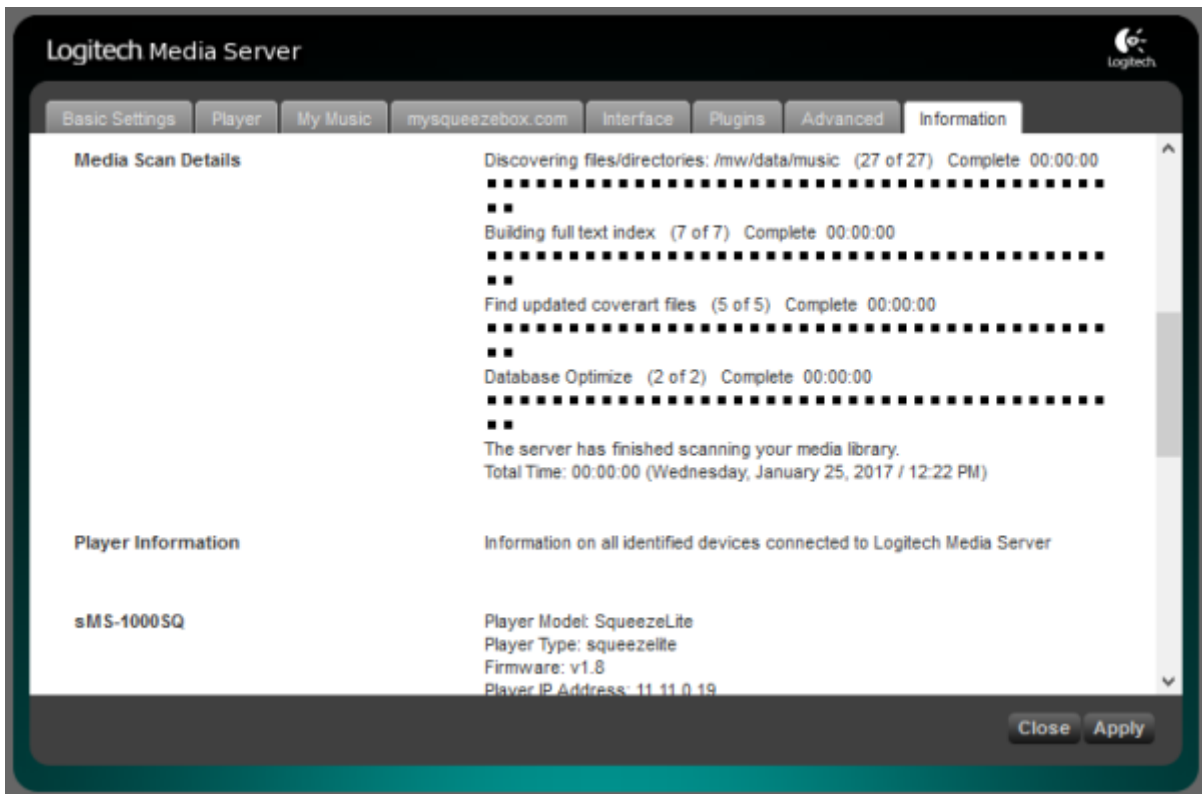
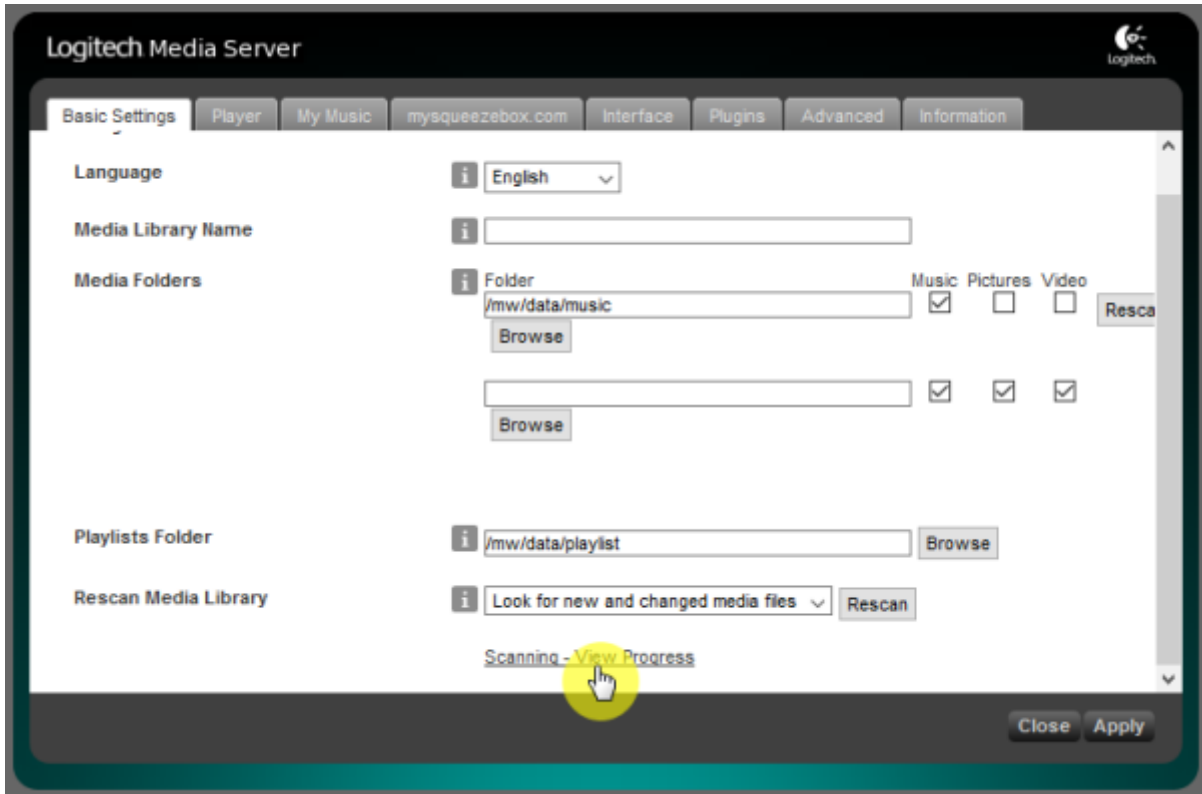
Settings



Basic Settings "Rescan"



"Scanning - View Progress"



Quboz, TIDAL

ickStream

- [http://wiki.ickstream.com/index.php/Open\\_Beta\\_Squeezebox\\_Installation](http://wiki.ickstream.com/index.php/Open_Beta_Squeezebox_Installation)

ickStream 가 , LMS > Settings > Advanced > ickStream

ickStream

ickStream

The screenshot shows the Logitech Media Server web interface. At the top, there are navigation tabs: Basic Settings, Player, My Music, mysqueezebox.com, Interface, Plugins, Advanced, and Information. The 'Advanced' tab is selected, and a sub-menu shows 'ickStream' is active. Below the navigation, a message states 'Changes have been saved.' The settings are as follows:

- Sort albums for artist: **i** by title
- Background daemon port: **i** 9006
- SSL peer verification: **i** Enabled
- Proxied streaming for hires services: **i** Enabled
- ickStream Music Platform Service: **i** [Login to ickStream Music Platform](#) [Refresh](#)

Below the service settings, there is a note: 'If you have just logged in successfully, click "Refresh" button to'. At the bottom, there are links for Terms of use (**i** [Logitech Media Server](#) , [SqueezeLite](#)) and Privacy Policy (**i** [Privacy Policy](#)).

This screenshot shows the same Logitech Media Server interface, but the ickStream service is now logged in. The settings are:

- Sort albums for artist: **i** by title
- Background daemon port: **i** 9006
- SSL peer verification: **i** Enabled
- Proxied streaming for hires services: **i** Enabled
- ickStream Music Platform Service: **i** [Logged in as: sotm.dev@gmail.com](#) [Refresh](#) [Logout](#)

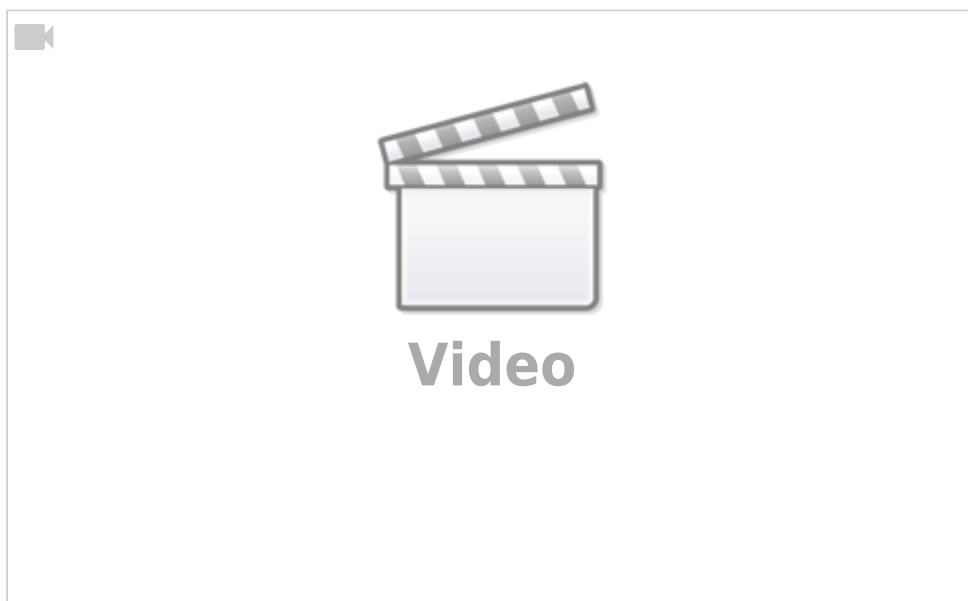
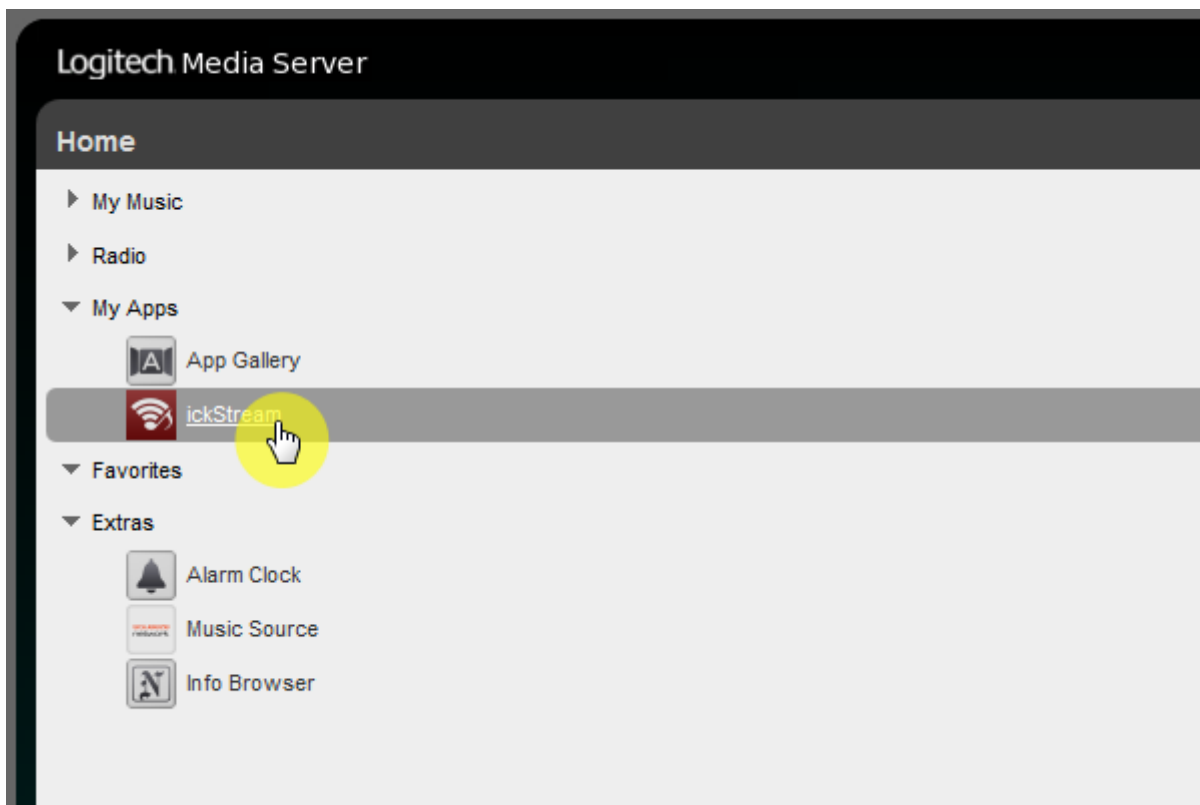
Below the service settings, there is a link: [Add or remove services from your ickStream Music Platform acc](#). Other settings include:

- Remotely controllable players: **i** sMS-200-USB [Refresh](#)
- Registered players: **i** None of the connected Squeezebox players are registered on ic [Refresh](#) [Re-register all players](#)
- Terms of use: **i** [Logitech Media Server](#) , [SqueezeLite](#)
- Privacy Policy: **i** [Privacy Policy](#)

LMS

My Apps

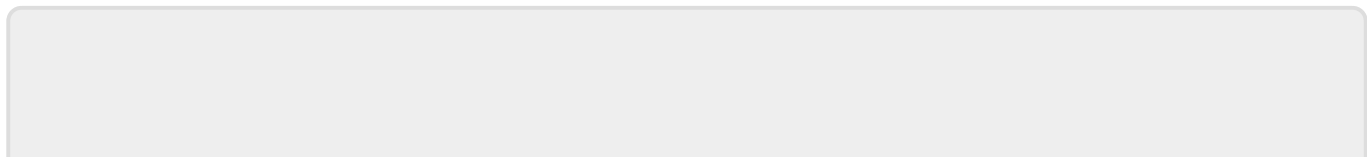
ickStream



Spotify

; Spotify

: 2017/01/24 23:56



From:

<https://www.docs.sotm-audio.com/> - **SOTM docs**

Permanent link:

<https://www.docs.sotm-audio.com/doku.php?id=ko:squeezelite&rev=1485320163>

Last update: **2017/01/24 23:56**

