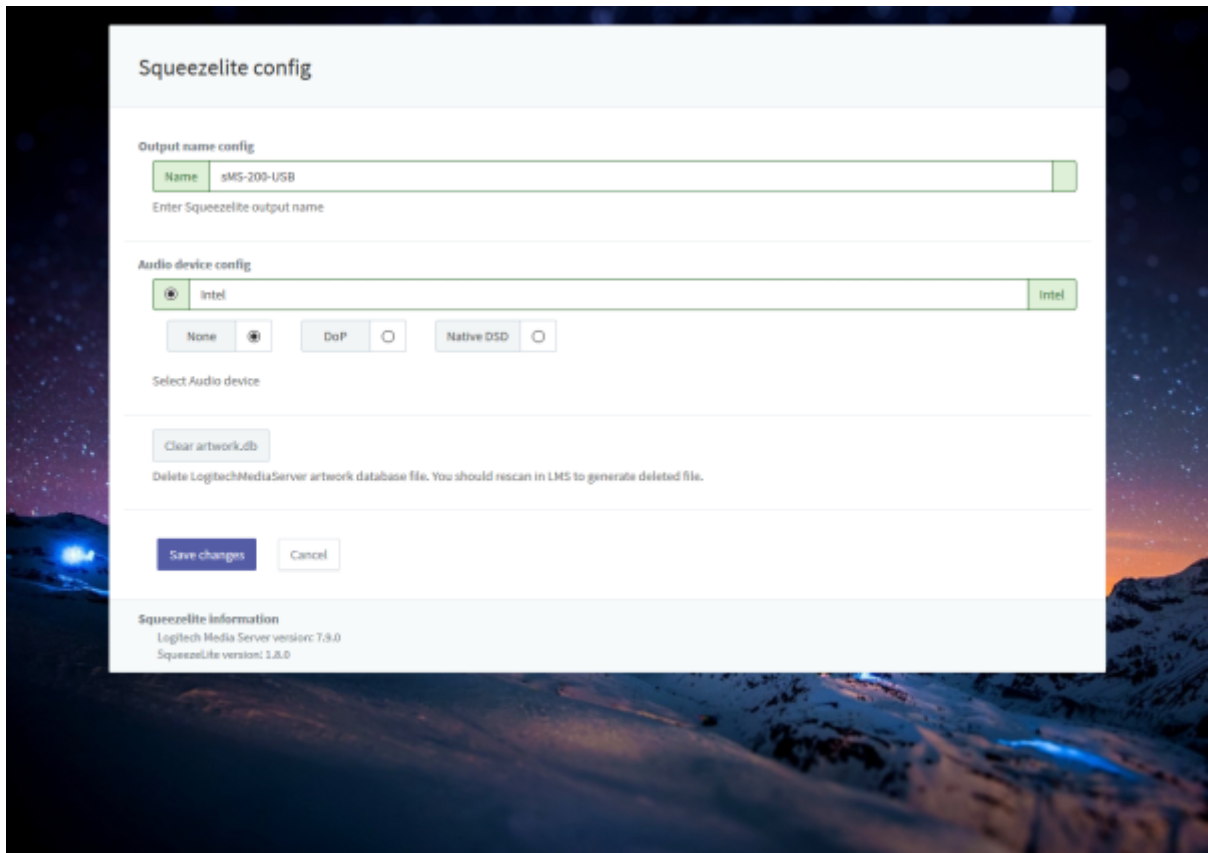


# Squeezelite Logitech Media Server(LMS)

Tidal, Qobuz, internet radio

Logitech Media Server

, LMS



- **Name:** LMS
- **Audio device config:** USB DAC
- **None:** PCM
- **DoP:** DSD DoP
- **Native DSD:** Native DSD 가 DAC Native DSD
- **Clear artwork.db:** LMS LMS rescan

LMS

rescan

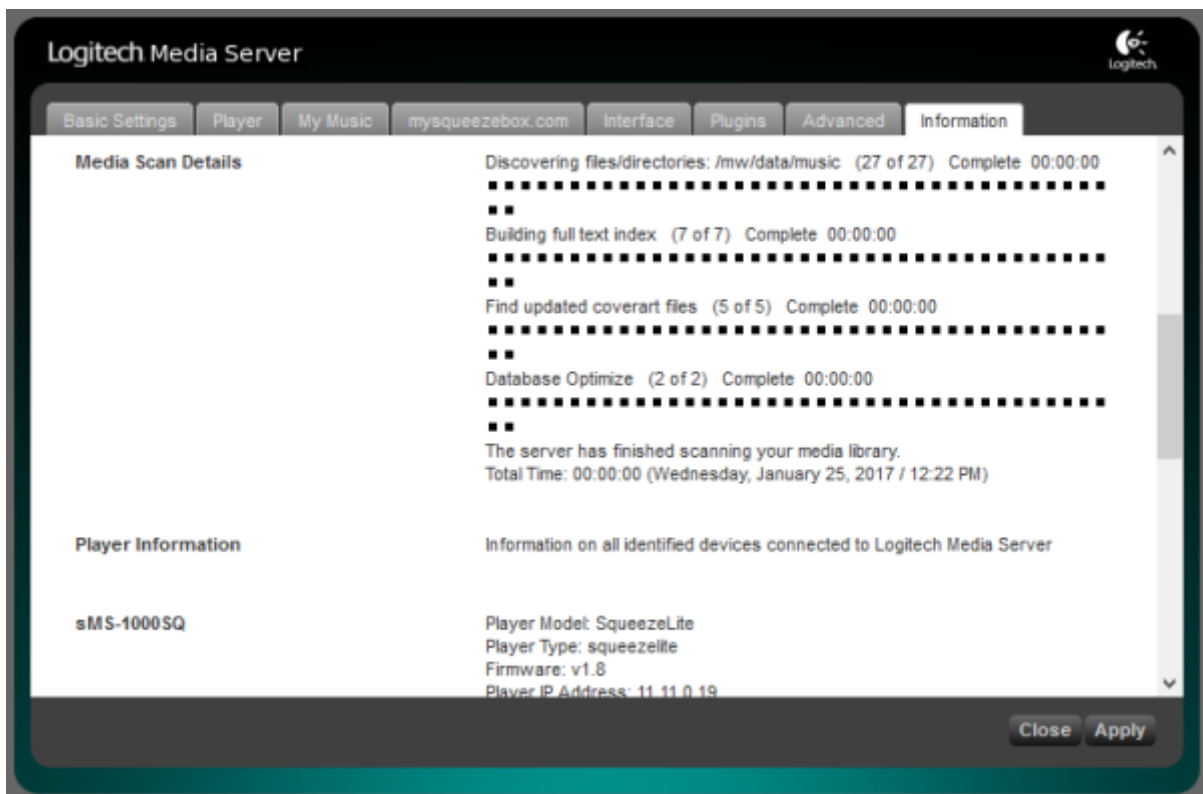
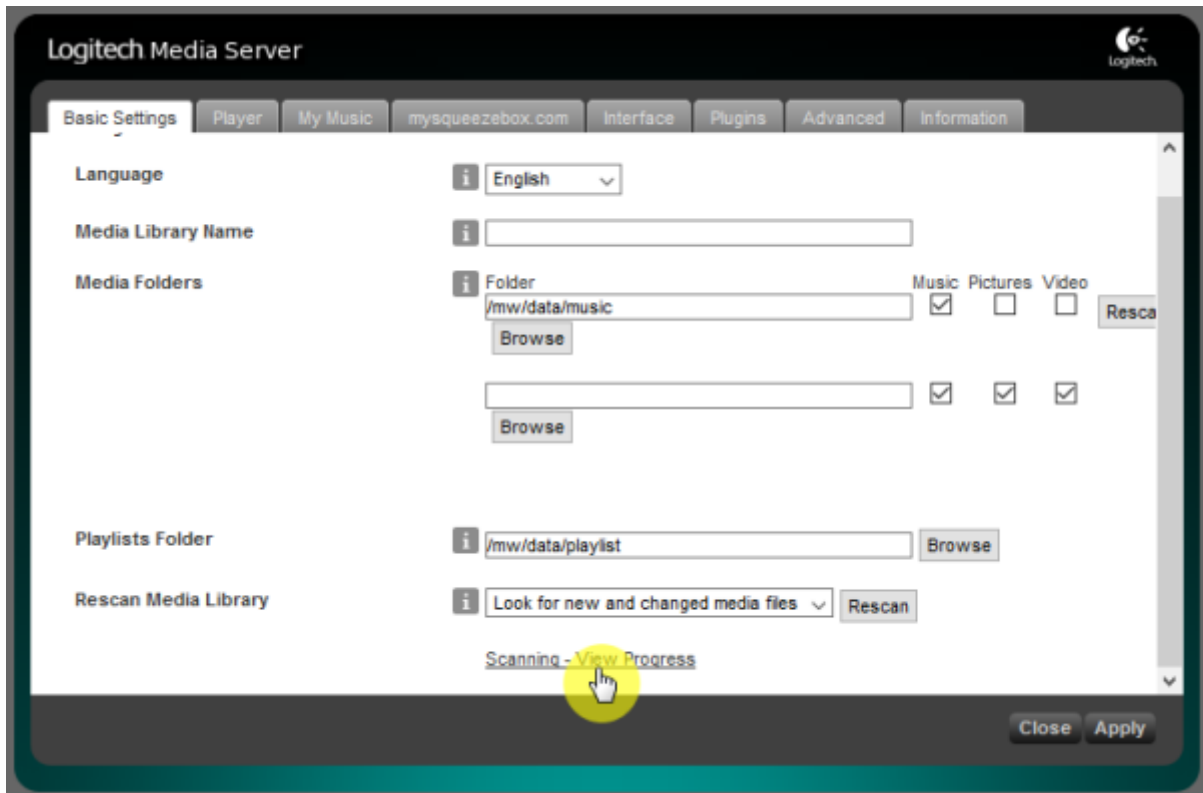
Settings



Basic Settings "Rescan"



"Scanning - View Progress"



Quboz, TIDAL

ickStream

- [http://wiki.ickstream.com/index.php/Open\\_Beta\\_Squeezebox\\_Installation](http://wiki.ickstream.com/index.php/Open_Beta_Squeezebox_Installation)

ickStream 가 , LMS > Settings > Advanced > ickStream

ickStream

ickStream

The screenshot shows the Logitech Media Server web interface. At the top, there are navigation tabs: Basic Settings, Player, My Music, mysqueezebox.com, Interface, Plugins, Advanced, and Information. The 'Advanced' tab is selected, and a sub-tab for 'ickStream' is active. Below the navigation, a message states 'Changes have been saved.' The settings are as follows:

- Sort albums for artist:
- Background daemon port:
- SSL peer verification:
- Proxied streaming for hires services:
- ickStream Music Platform Service:

Below the 'Login to ickStream Music Platform' button, there is a yellow circle with a hand cursor icon pointing to it. A text instruction reads: 'If you have just logged in successfully, click "Refresh" button to'. At the bottom, there are links for 'Terms of use' (Logitech Media Server, SqueezeLite) and 'Privacy Policy' (Privacy Policy).

This screenshot shows the same Logitech Media Server interface, but the 'ickStream Music Platform Service' section has updated. It now displays 'Logged in as: sotm.dev@gmail.com' with 'Refresh' and 'Logout' buttons. Below this, there is a link: 'Add or remove services from your ickStream Music Platform account'. Other settings remain the same as in the previous screenshot.

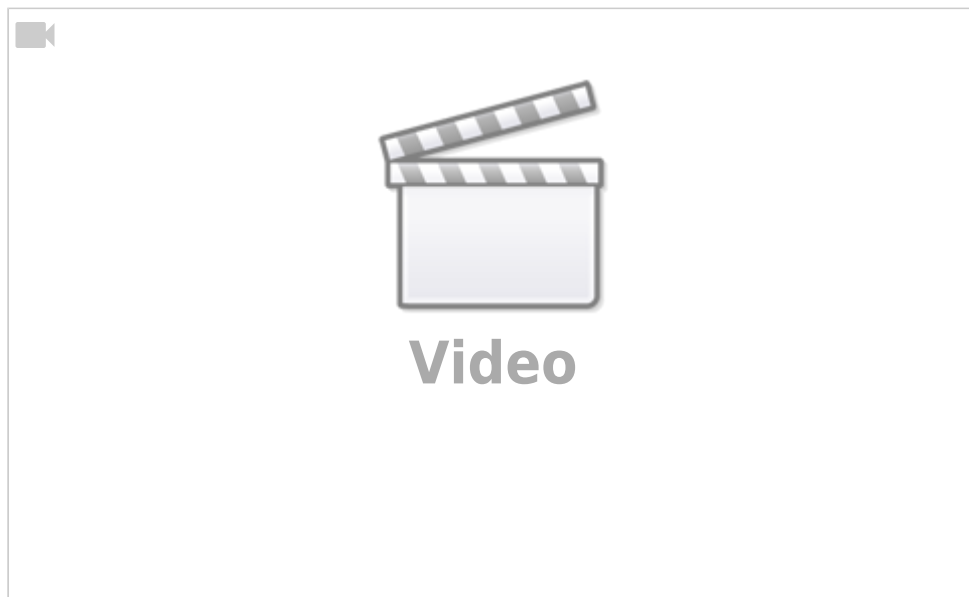
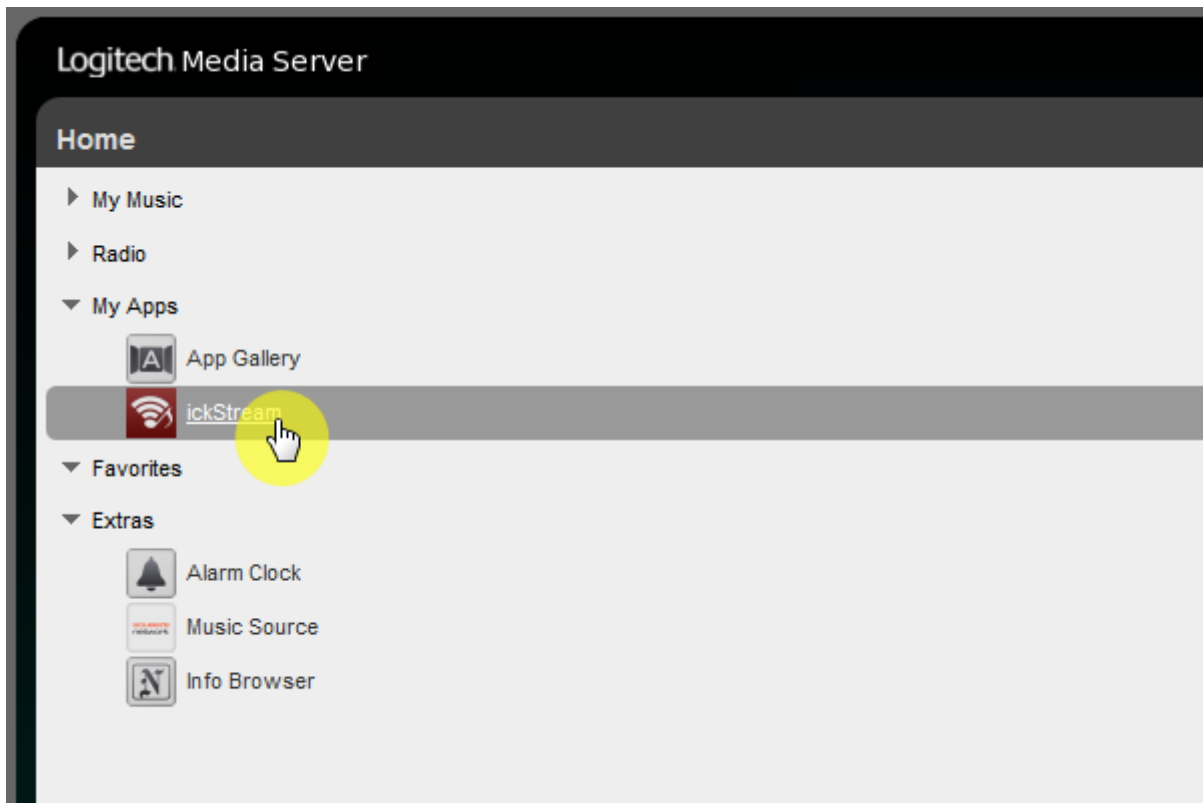
- Sort albums for artist:
- Background daemon port:
- SSL peer verification:
- Proxied streaming for hires services:
- ickStream Music Platform Service:

Below the 'Logout' button, there is a link: 'Add or remove services from your ickStream Music Platform account'. Further down, there are sections for 'Remotely controllable players' (sMS-200-USB with a 'Refresh' button) and 'Registered players' (None of the connected Squeezebox players are registered on ic with 'Refresh' and 'Re-register all players' buttons). At the bottom, there are links for 'Terms of use' (Logitech Media Server, SqueezeLite) and 'Privacy Policy' (Privacy Policy).

LMS

My Apps

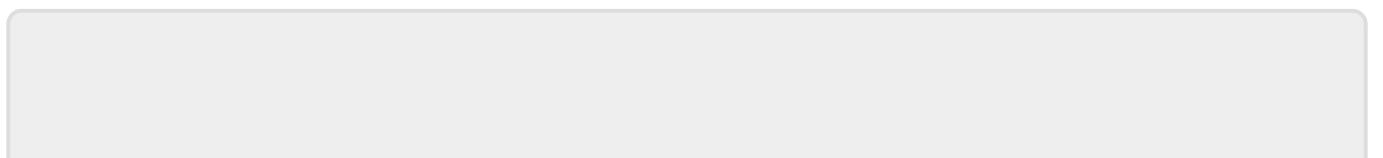
ickStream



Spotify

; Spotify

: 2017/01/24 22:31



From:

<https://www.docs.sotm-audio.com/> - **SOTM docs**

Permanent link:

<https://www.docs.sotm-audio.com/doku.php?id=ko:squeezelite&rev=1485315104>

Last update: **2017/01/24 22:31**

