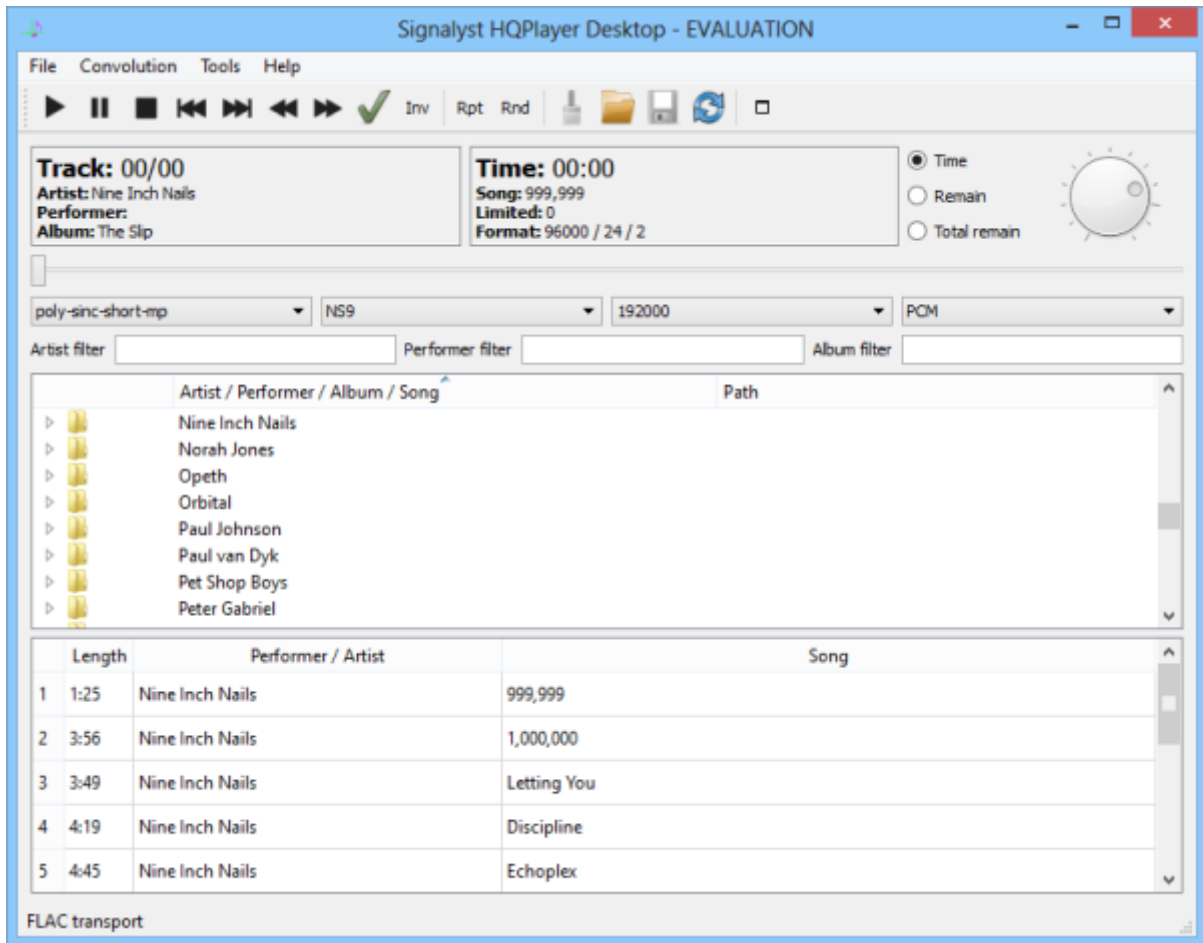


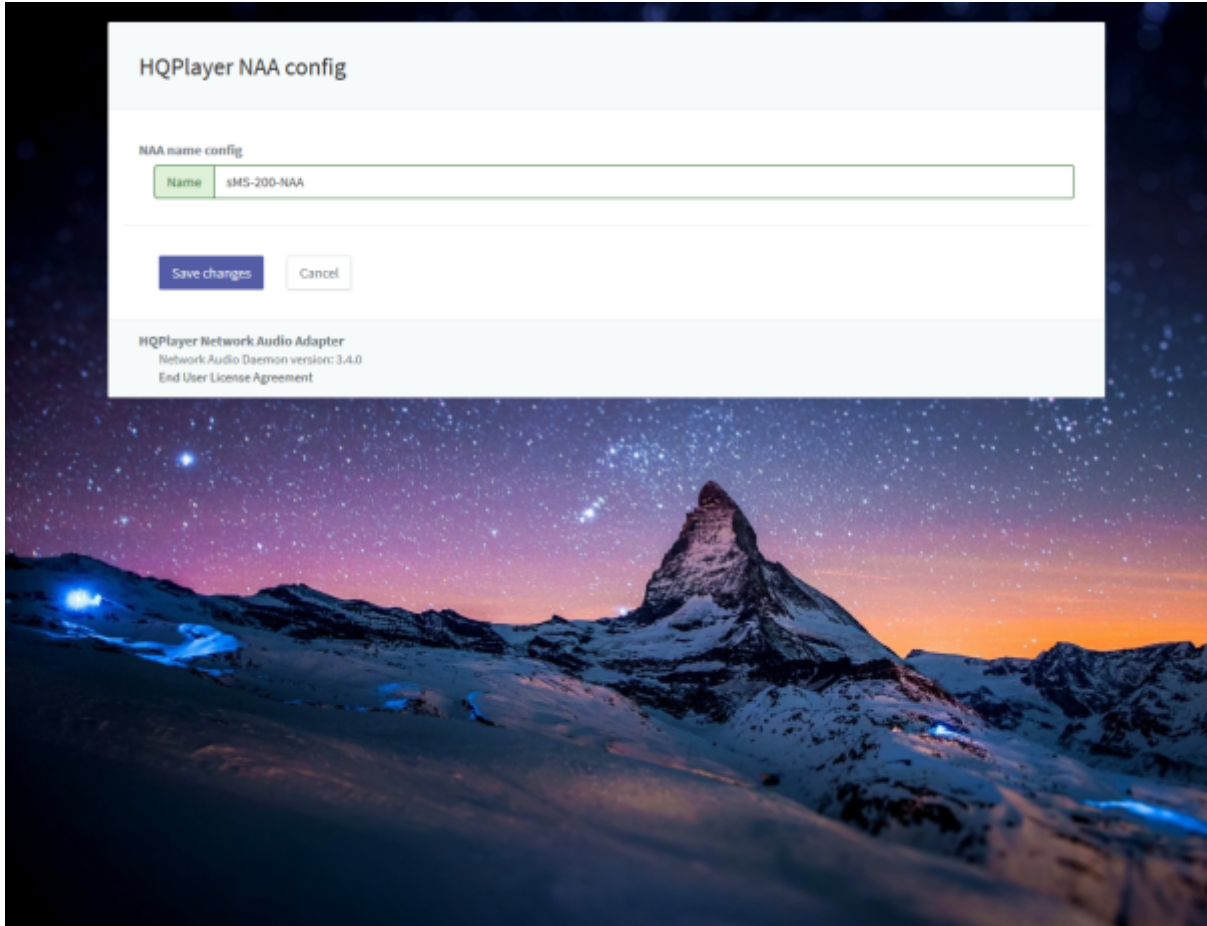
# HQPlayer NAA



HQPlayer Desktop Windows, macOS, Linux up-sampling 가

. HQPlayer NAA HQPlayer Desktop

DSD . HQPlayer NAA



Eunhasu HQPlayer NAA

HQPlayer Desktop

**Settings**

CD drive  
/dev/sr0

Device Settings

Backend  
NetworkAudioAdapter

Device  
sMS-200-NAA: SotM USB Audio 2.0: USB Aud

Channels: 2 | Ch. offset: 0 | SDM Pack: none |  2wire

Buffer time: Default | DAC bits: Default |  AltDSD

PCM Defaults | SDM Defaults

Filter: poly-sinc | Oversampling: poly-sinc-2s

Dither: TPDF | Modulator: ASDM7

Sample rate (/ Limit): 96000 | Bit rate (/ Limit): 2822400

Vol Min: -60.0dB | Vol Max: 0.0dB

Pipeline SDM |  CUDA offload

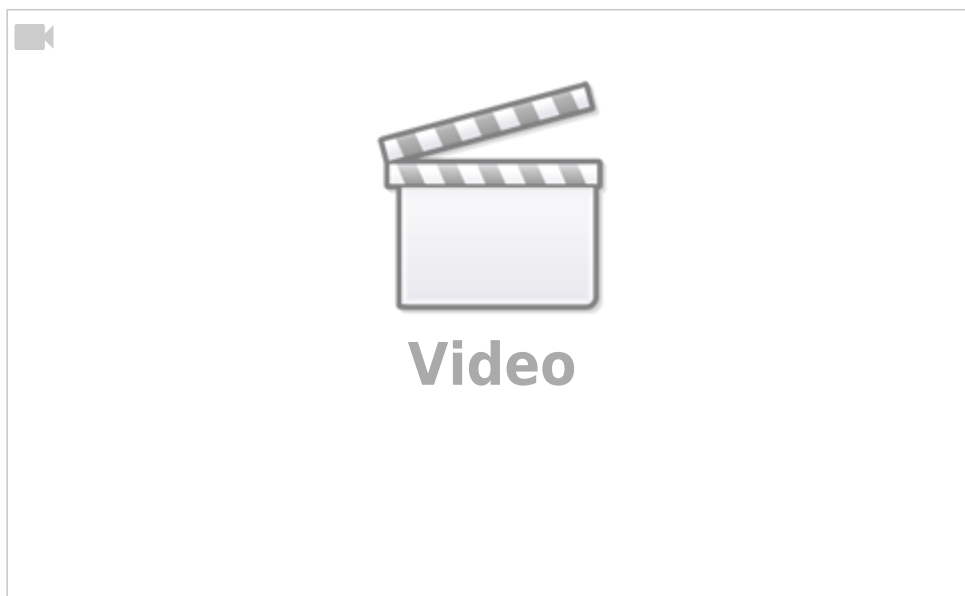
Auto rate family |  Full screen mode

Log file

HQPlayer Desktop

Eunhasu

HQPlayer NAA



: 2017/01/24 22:05

From:

<https://www.docs.sotm-audio.com/> - **SotM docs**

Permanent link:

[https://www.docs.sotm-audio.com/doku.php?id=ko:hqplayer\\_naa&rev=1485313533](https://www.docs.sotm-audio.com/doku.php?id=ko:hqplayer_naa&rev=1485313533)

Last update: **2017/01/24 22:05**

