

- sMS-200 V0.3.0 sMS-1000SQ Eunhasu V0.3.0
- Wifi dongle
 - RTL8812AU

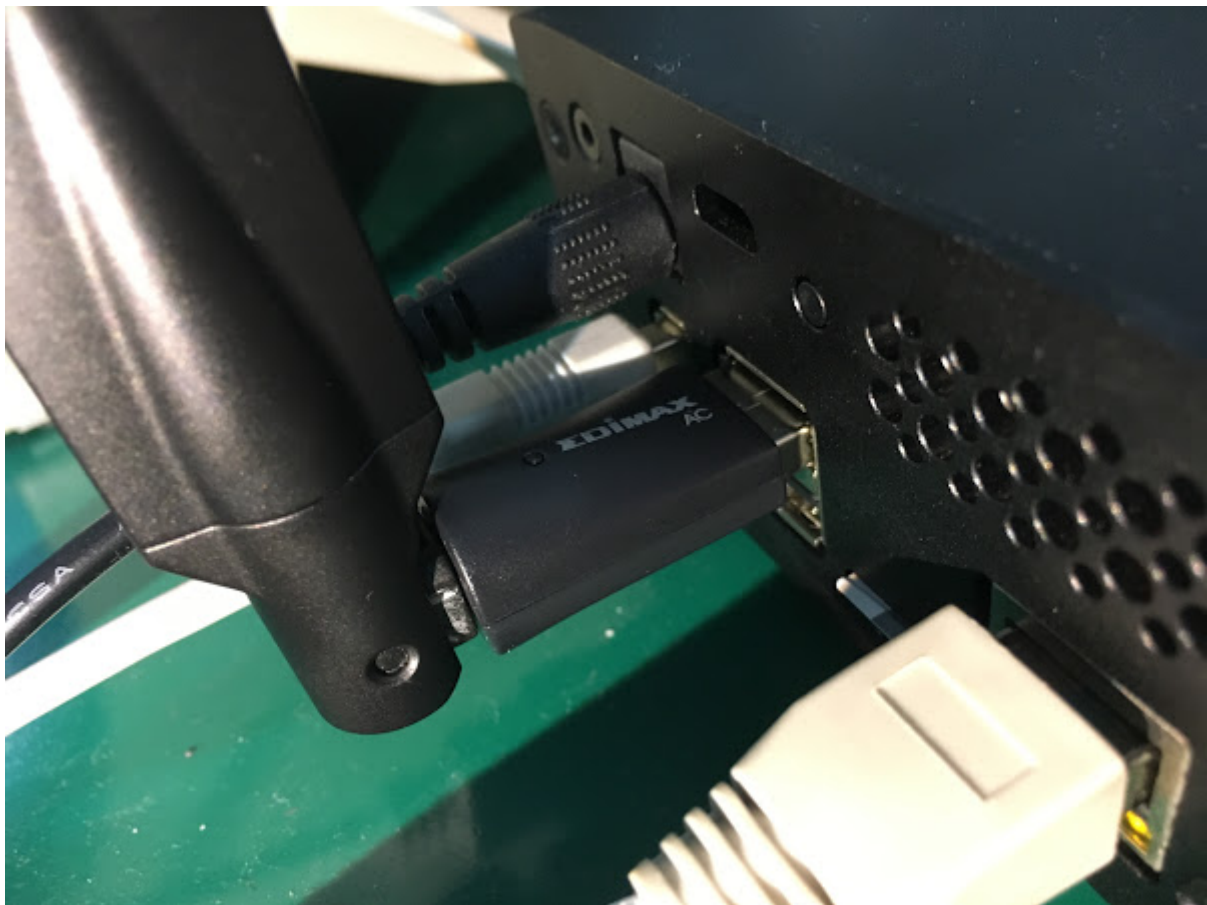
Simple Instruction

USB

Wifi USB

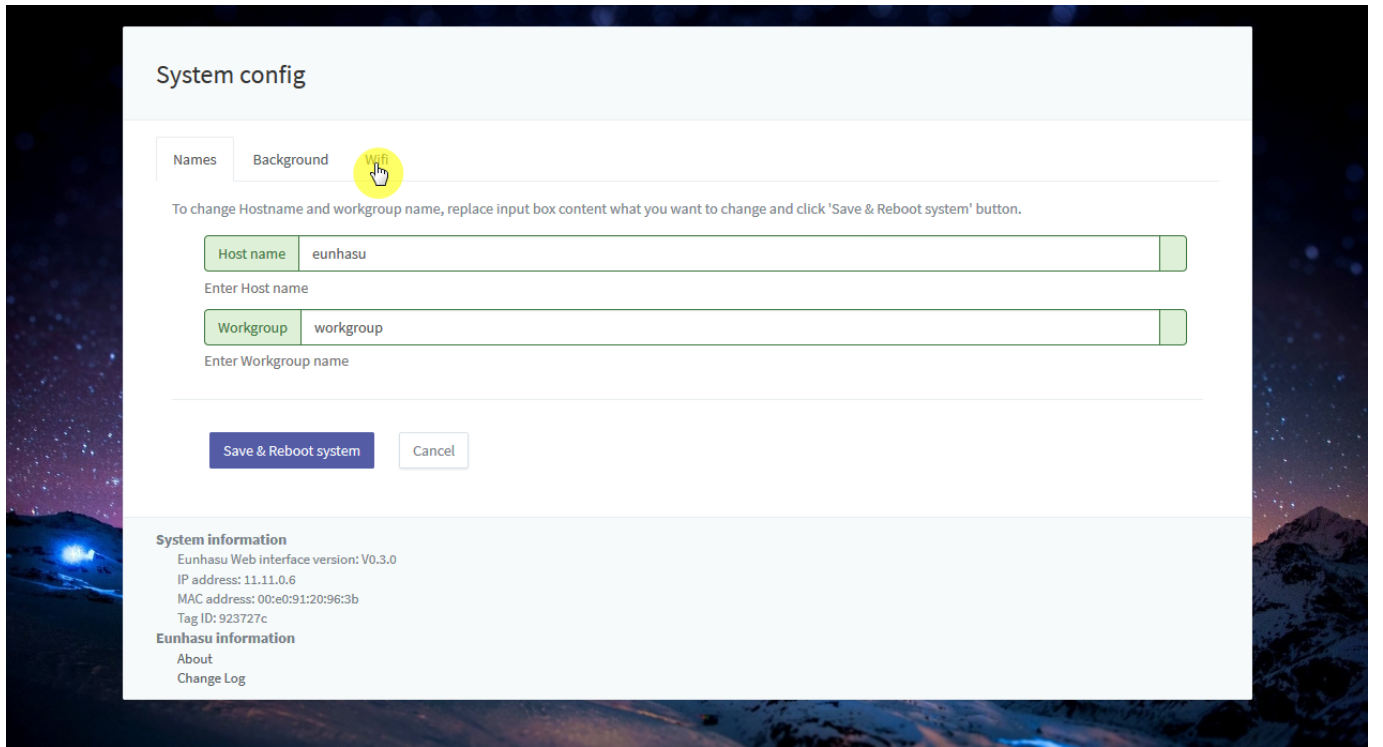
. Wifi

LAN

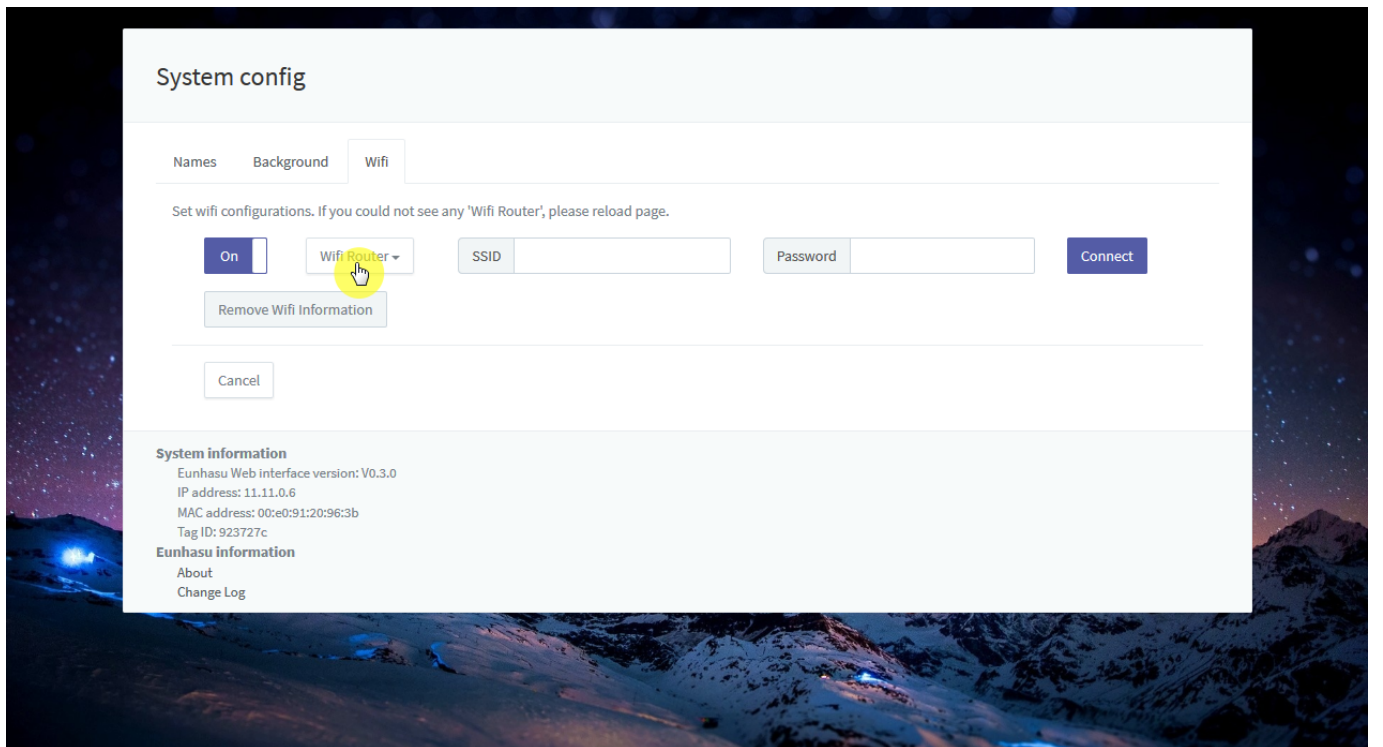


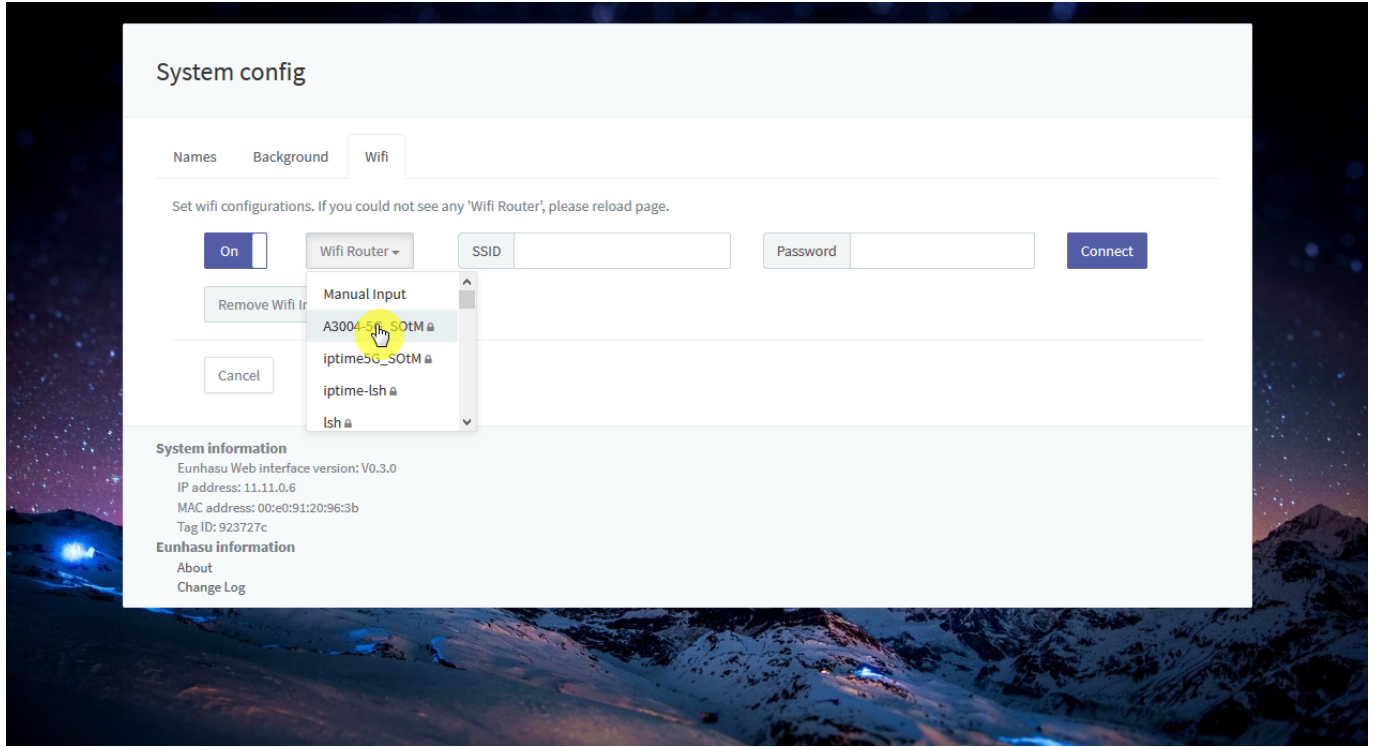
System config

'Wifi'



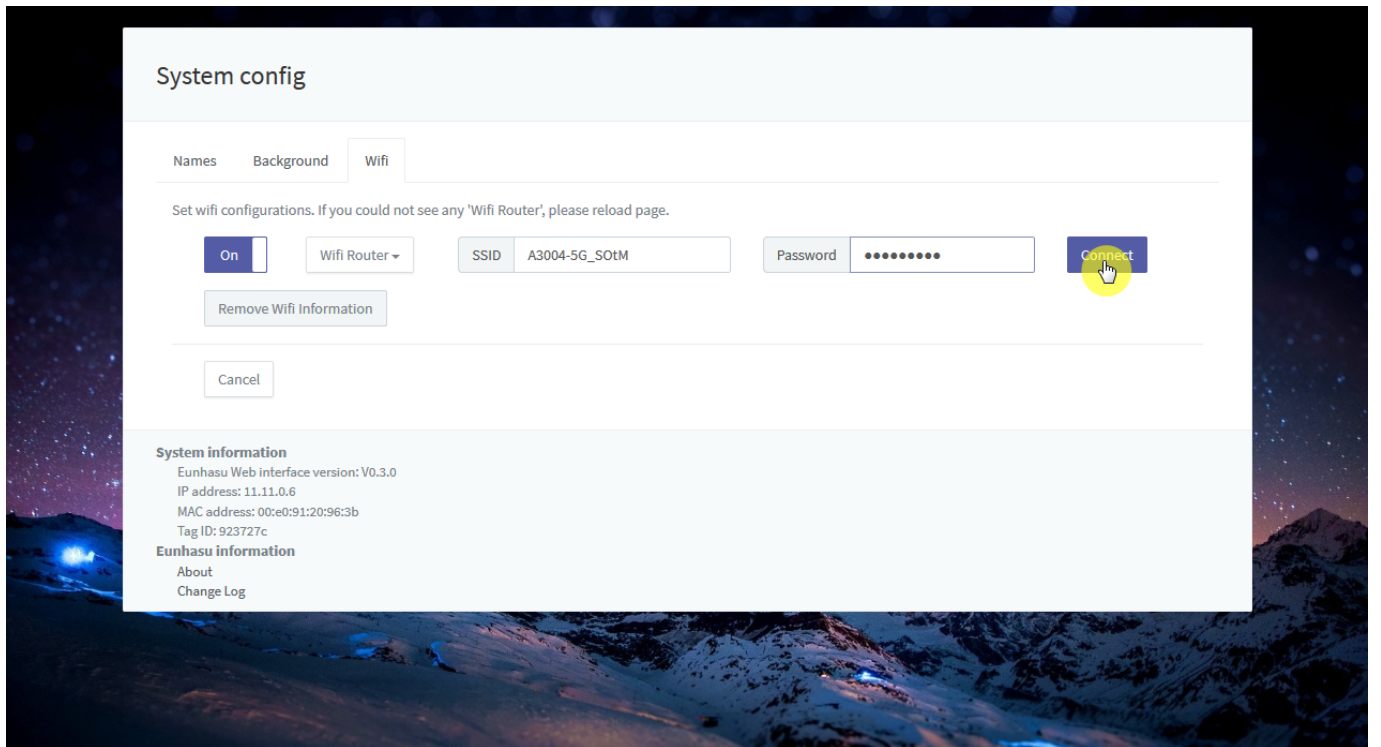
'Wifi Router'

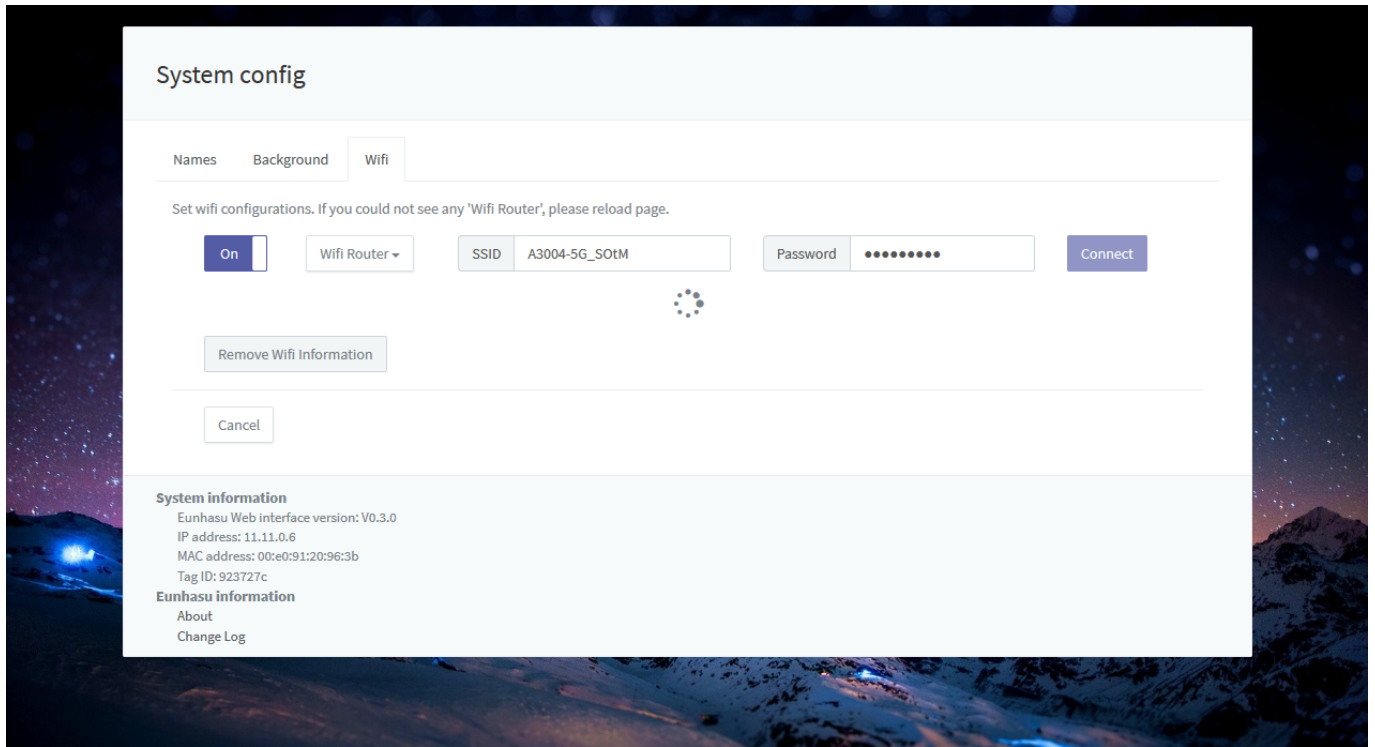




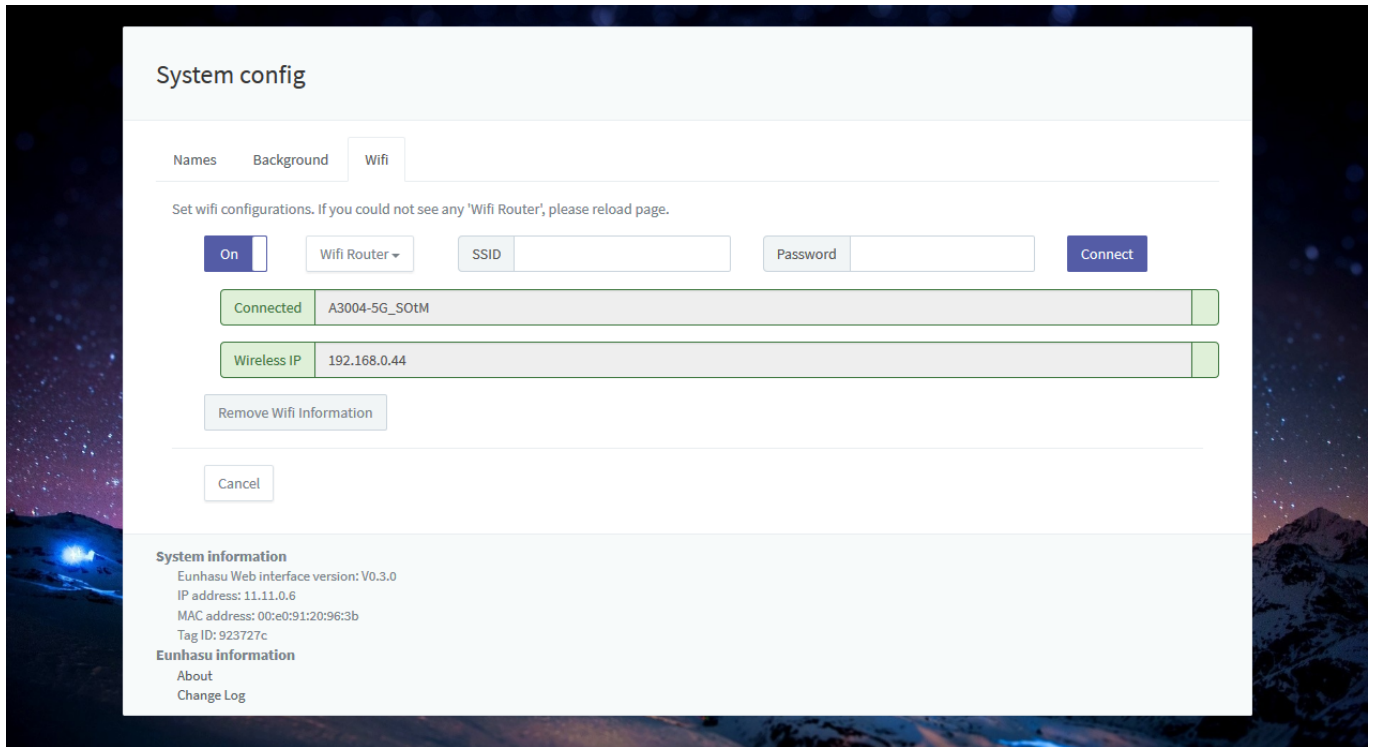
가

'Connect'



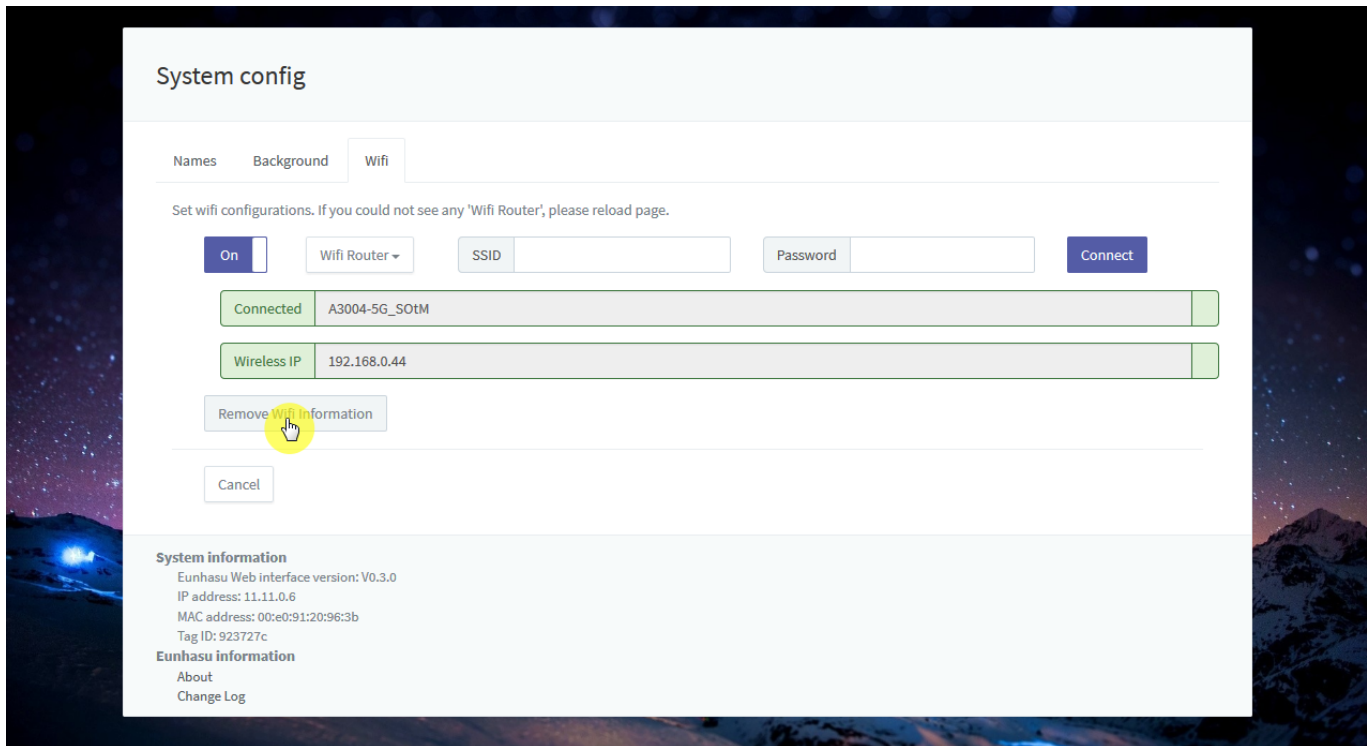



IP



'Remove Wifi Information'

AP 가





- Eunhasu V0.3.0
- 가
- 가
- 5Ghz

Last Updated: 2017/01/24 21:20

From:
<https://www.docs.sotm-audio.com/> - **SOTM docs**

Permanent link:
https://www.docs.sotm-audio.com/doku.php?id=ko:how_to_use_wifi_in_eunhasu&rev=1485310807

Last update: **2017/01/24 21:20**

