

- SMS-200 V0.3.0 SMS-1000SQ Eunhasu V0.3.0
- Wifi dongle
 - RTL8812AU

Simple Instruction

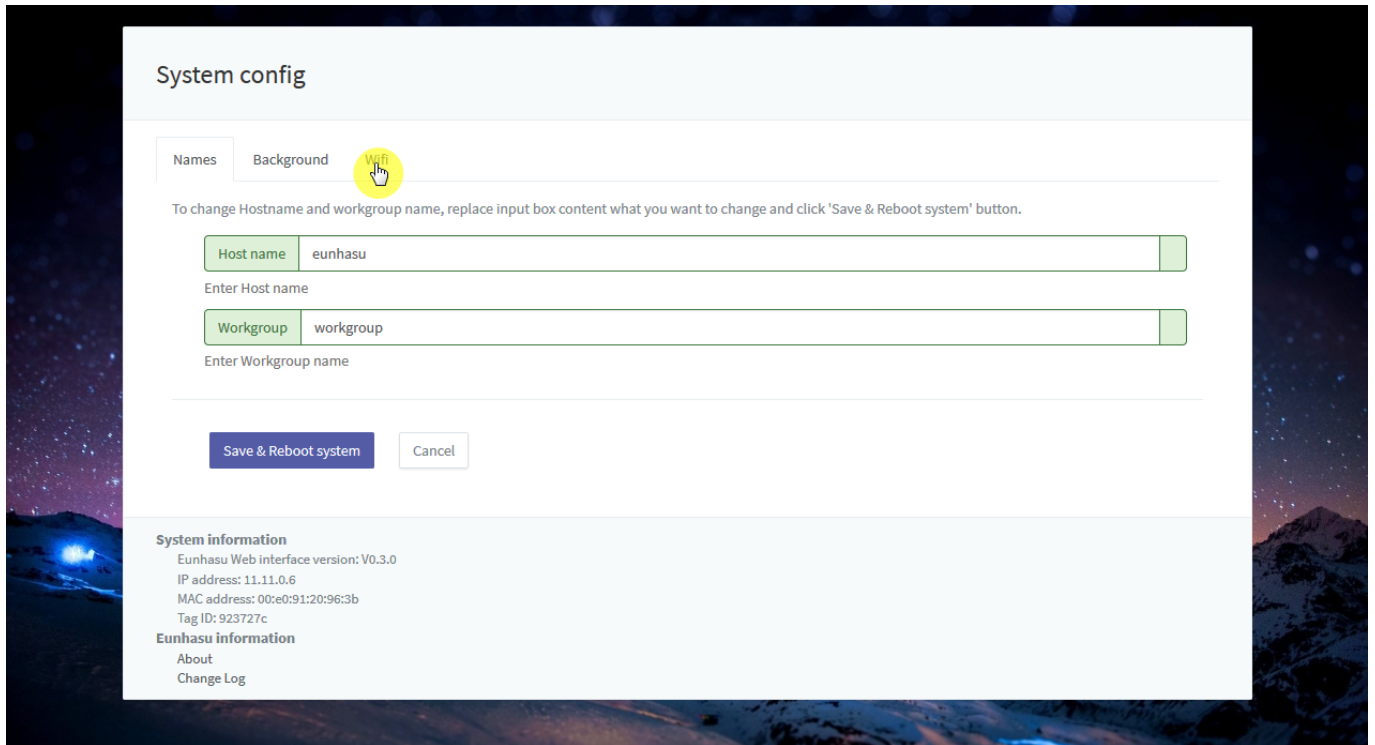
USB

Wifi USB

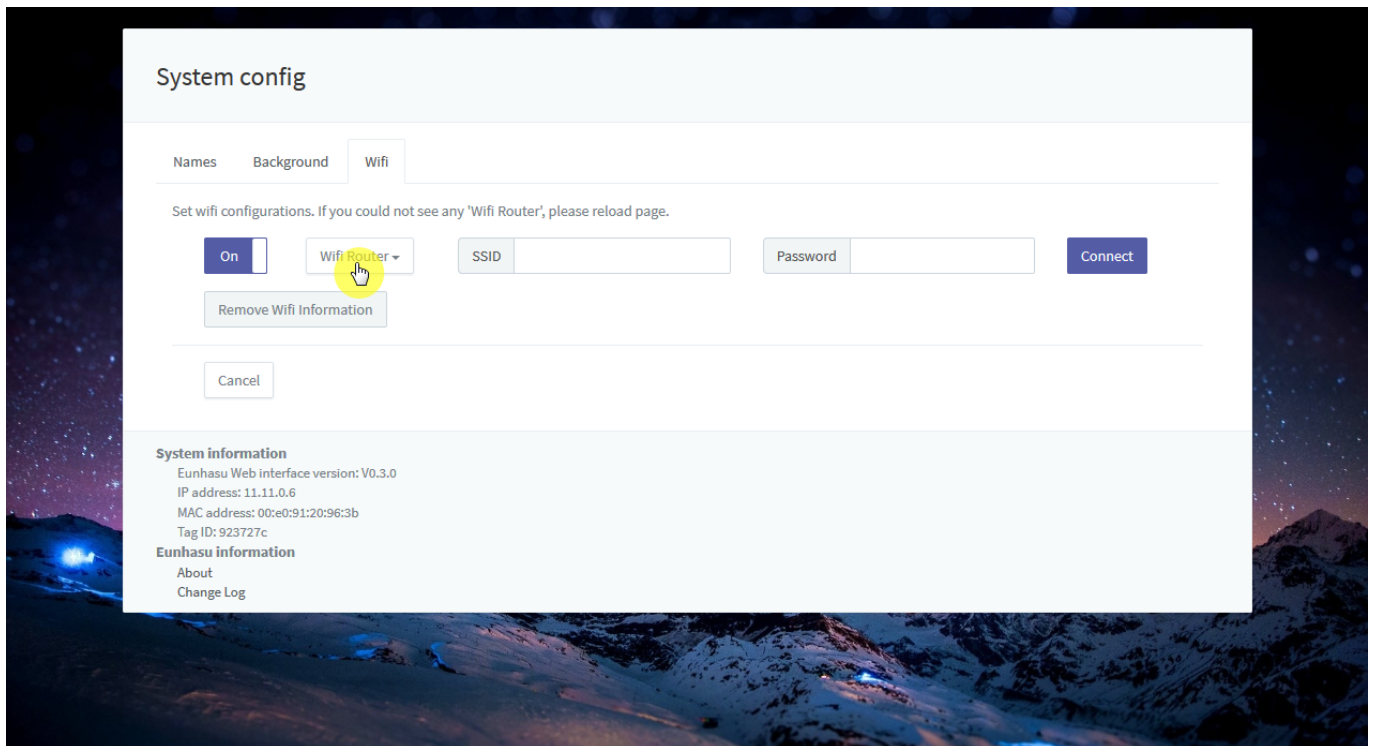


System config

'Wifi'

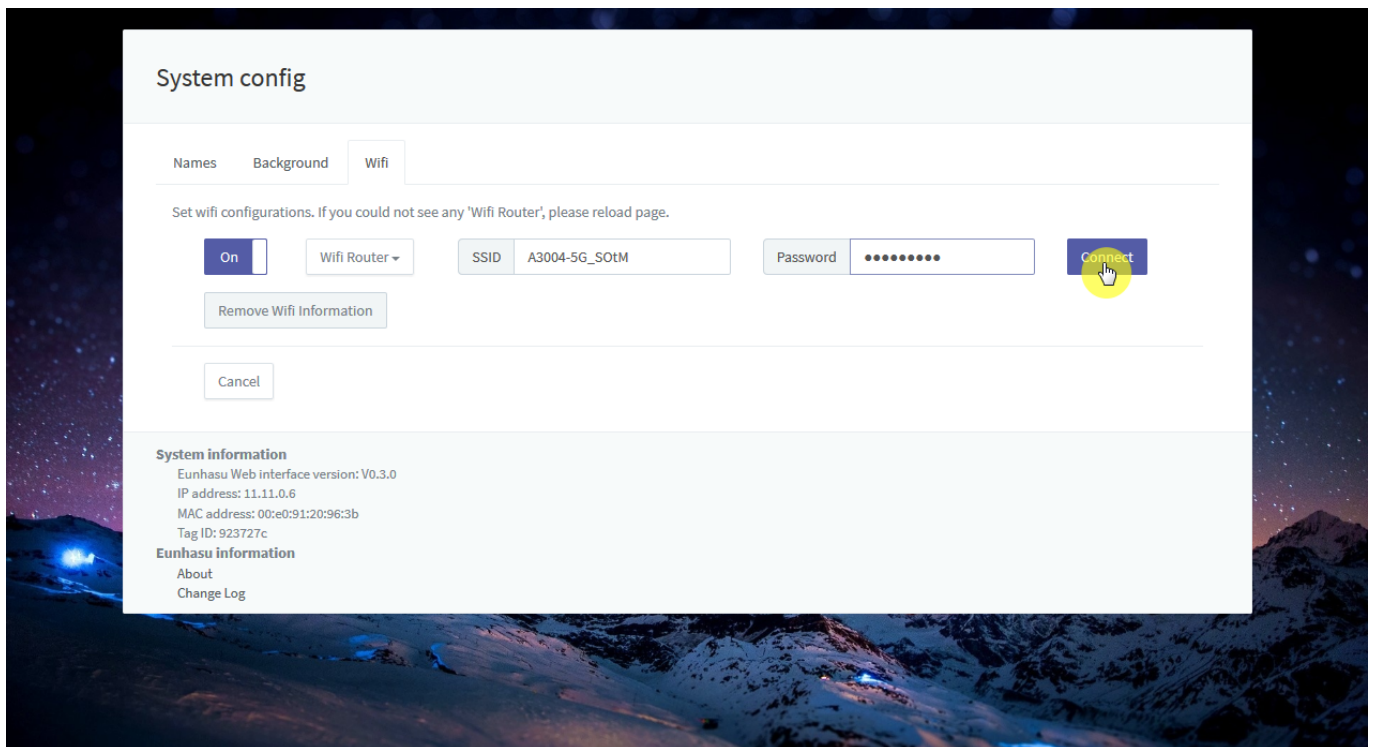


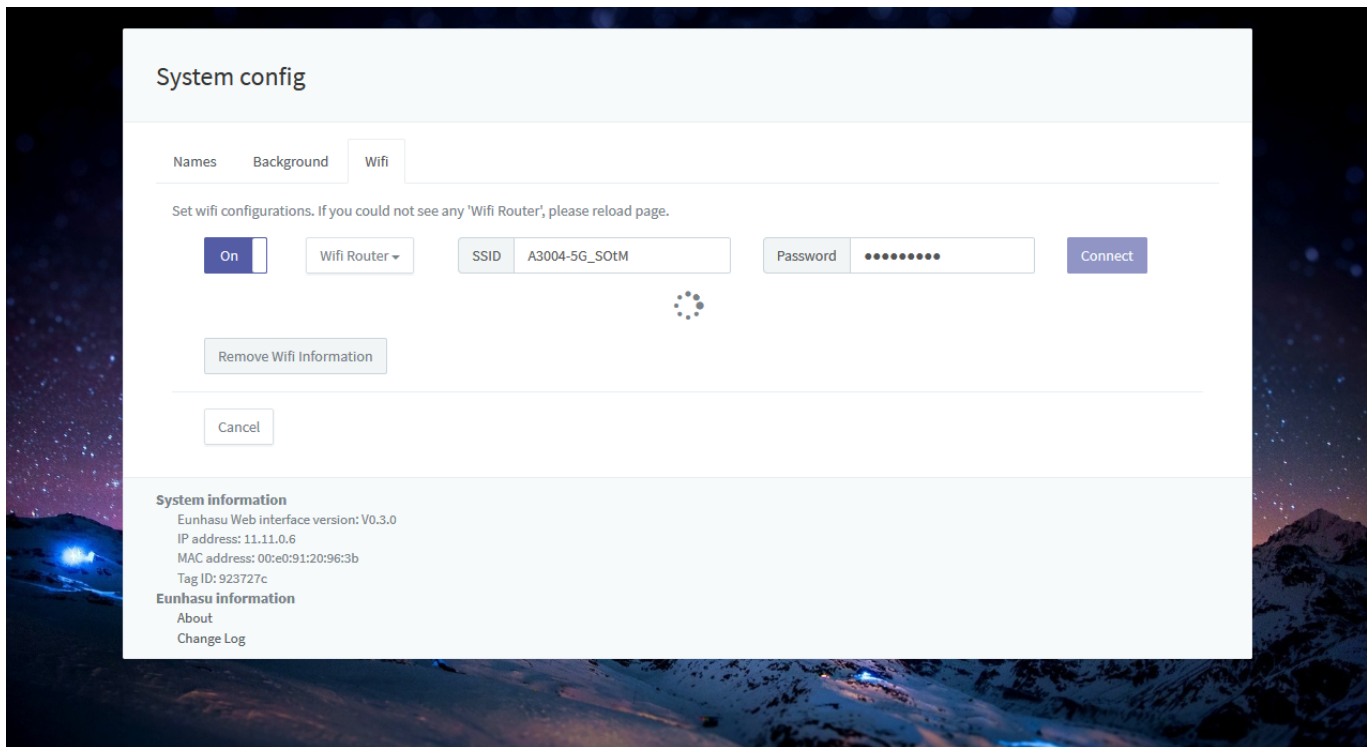
'Wifi Router'



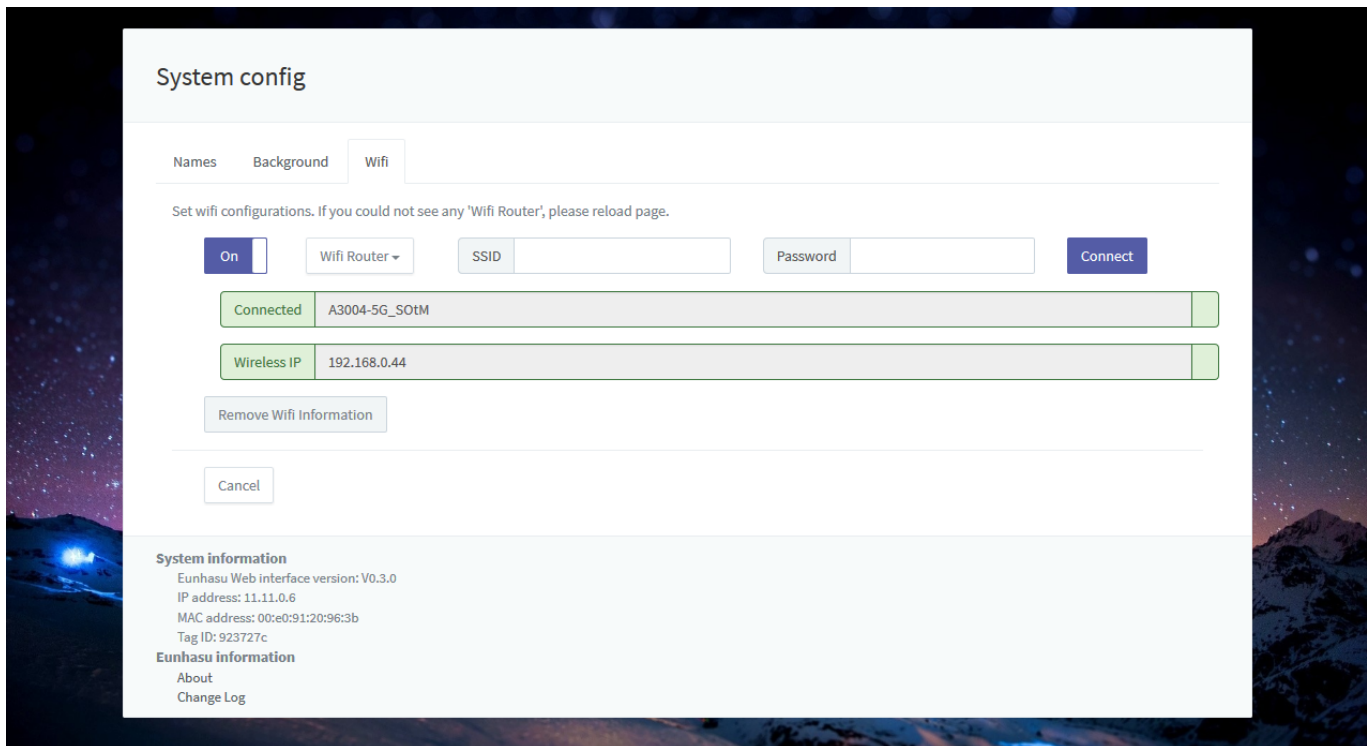


'Connect'





IP



'Remove Wifi Information'

AP 가

System config

Names Background **Wifi**

Set wifi configurations. If you could not see any 'Wifi Router', please reload page.

On

Connected	A3004-5G_SOTM
Wireless IP	192.168.0.44

System information
Eunhasu Web interface version: V0.3.0
IP address: 11.11.0.6
MAC address: 00:e0:91:20:96:3b
Tag ID: 923727c

Eunhasu information
[About](#)
[Change Log](#)

From:
<https://www.docs.sotm-audio.com/> - **SOTM docs**

Permanent link:
https://www.docs.sotm-audio.com/doku.php?id=ko:how_to_use_wifi_in_eunhasu&rev=1483693342

Last update: **2017/01/06 04:02**

