

mSD

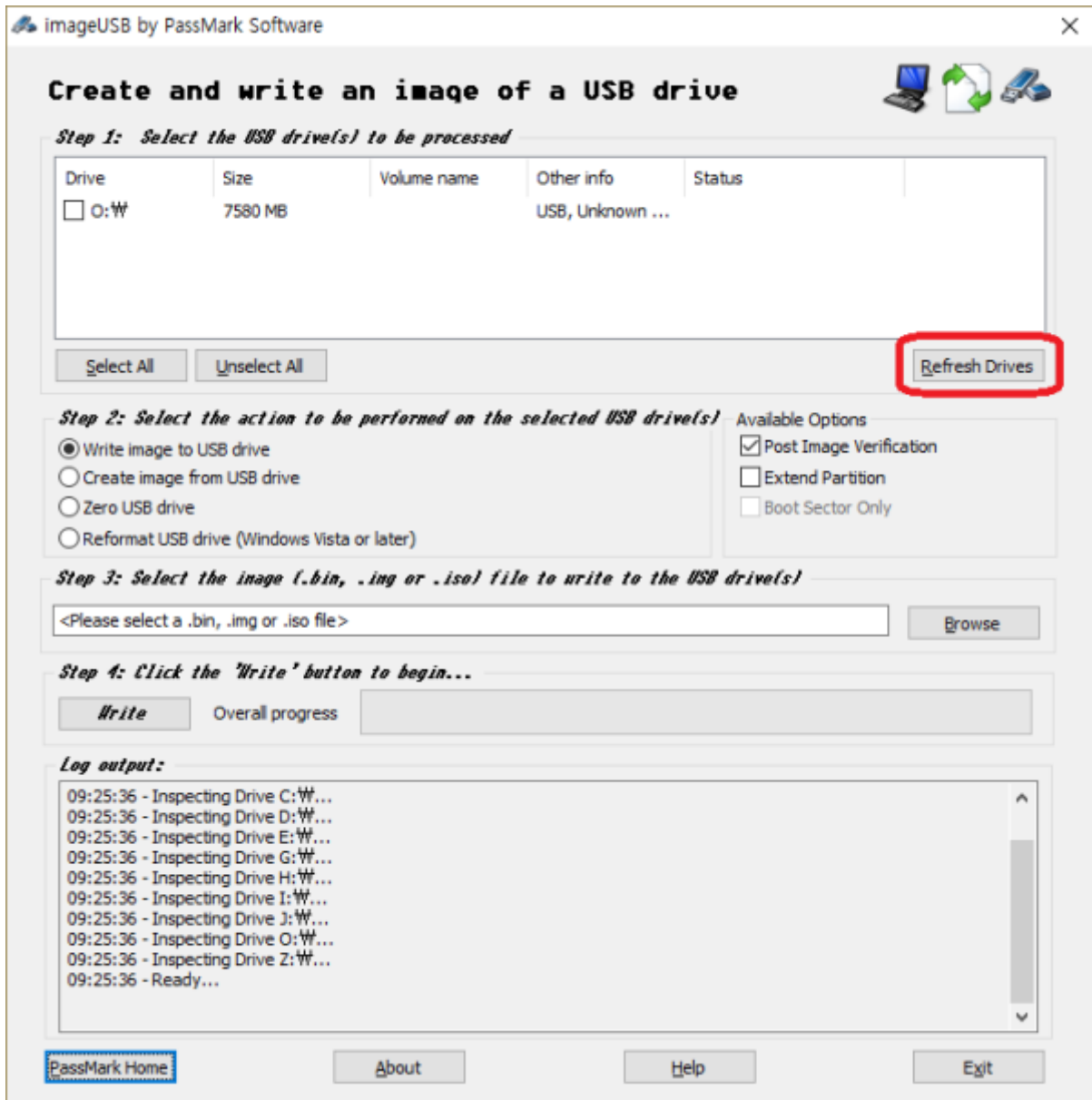
micro SD

Windows

1. SD
 .(3.0 GB .gz) [new micro SD card image](#)
2. SD
 .(7.9 GB .img)
3. PC [imageUSB](#) ,
4. SMS-200 SD
 SD PC .

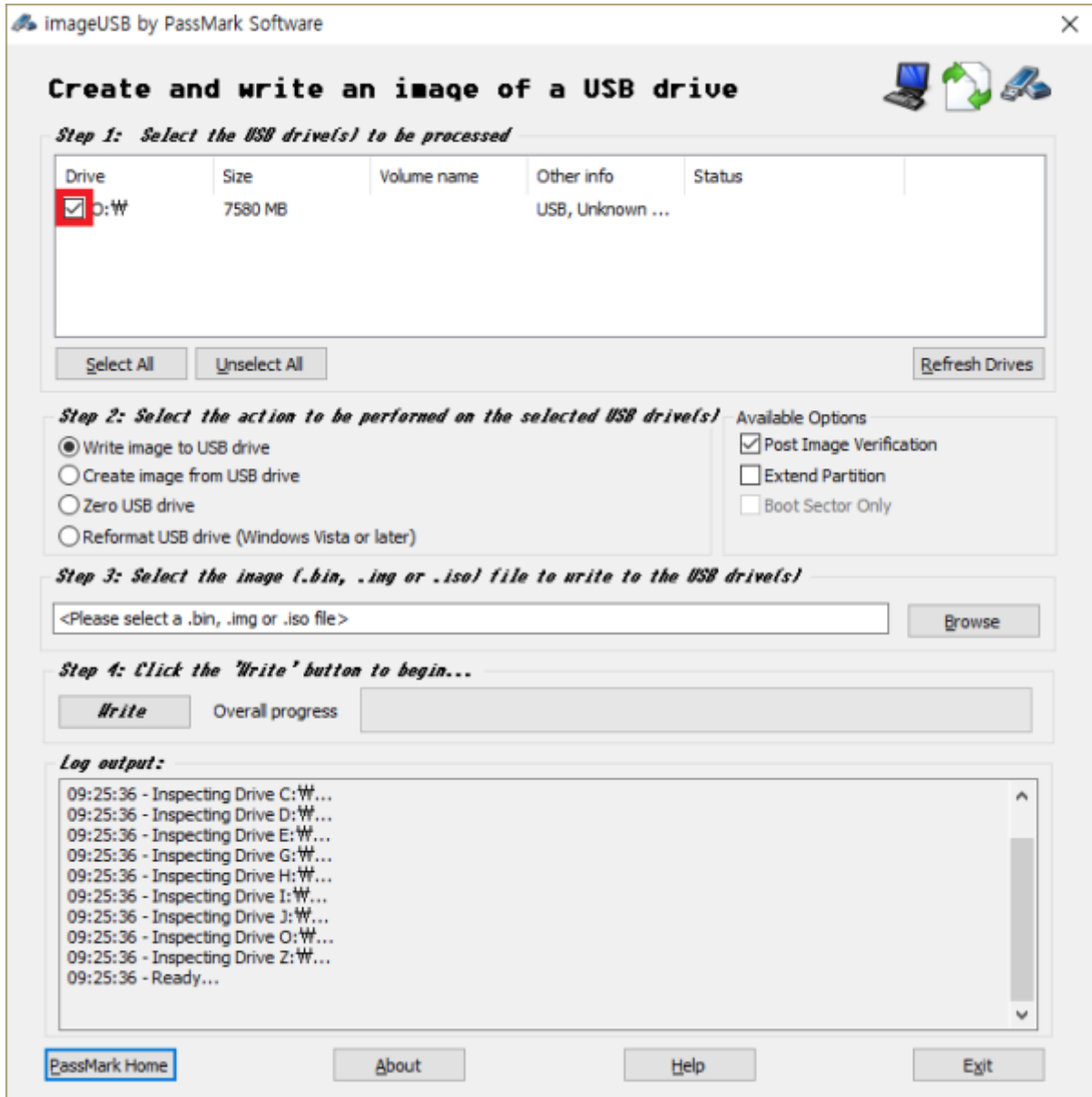
imageUSB

[imageUSB](#) , USB 가 ,
 'Refresh Drives' .

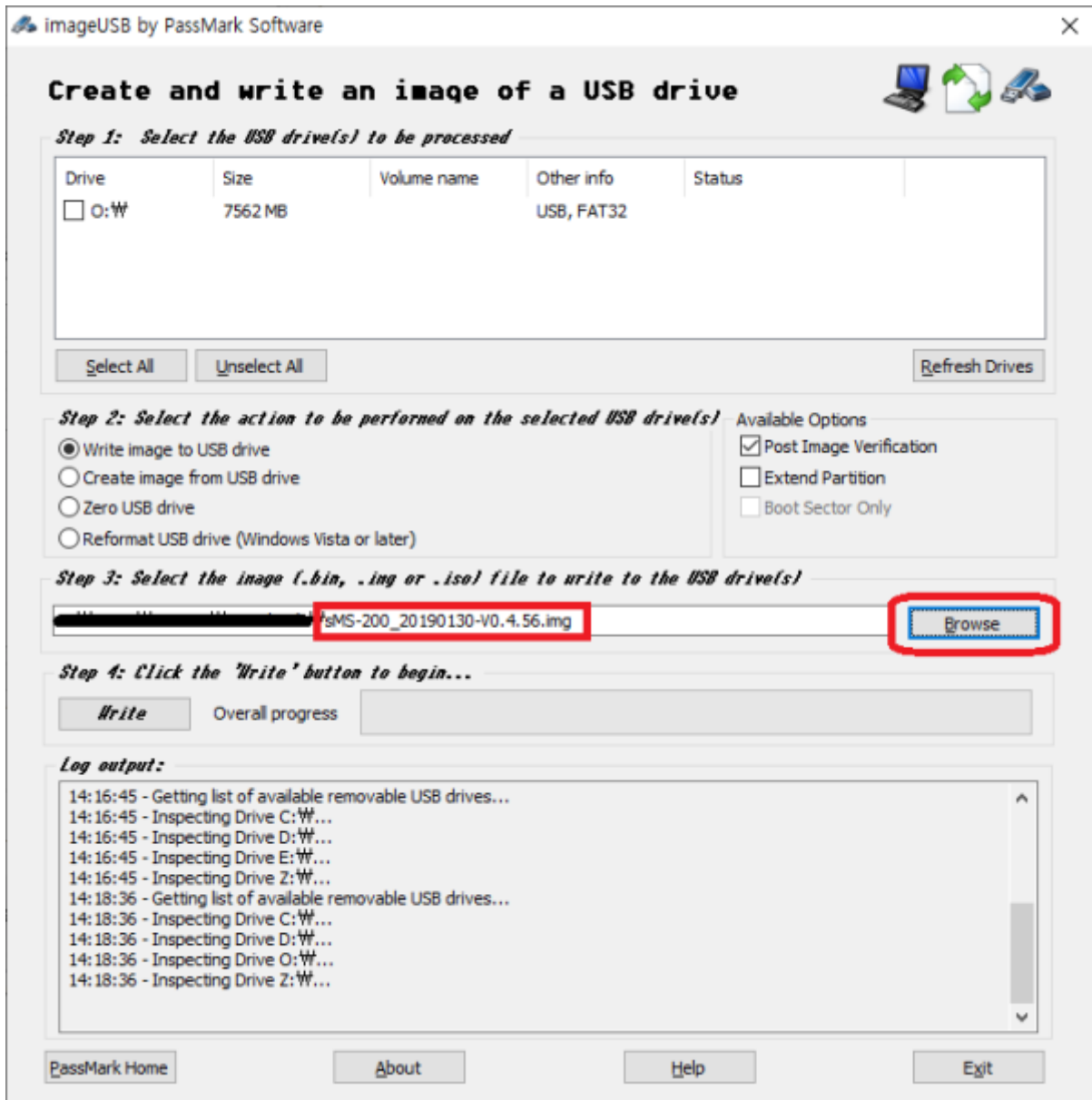


USB

USB

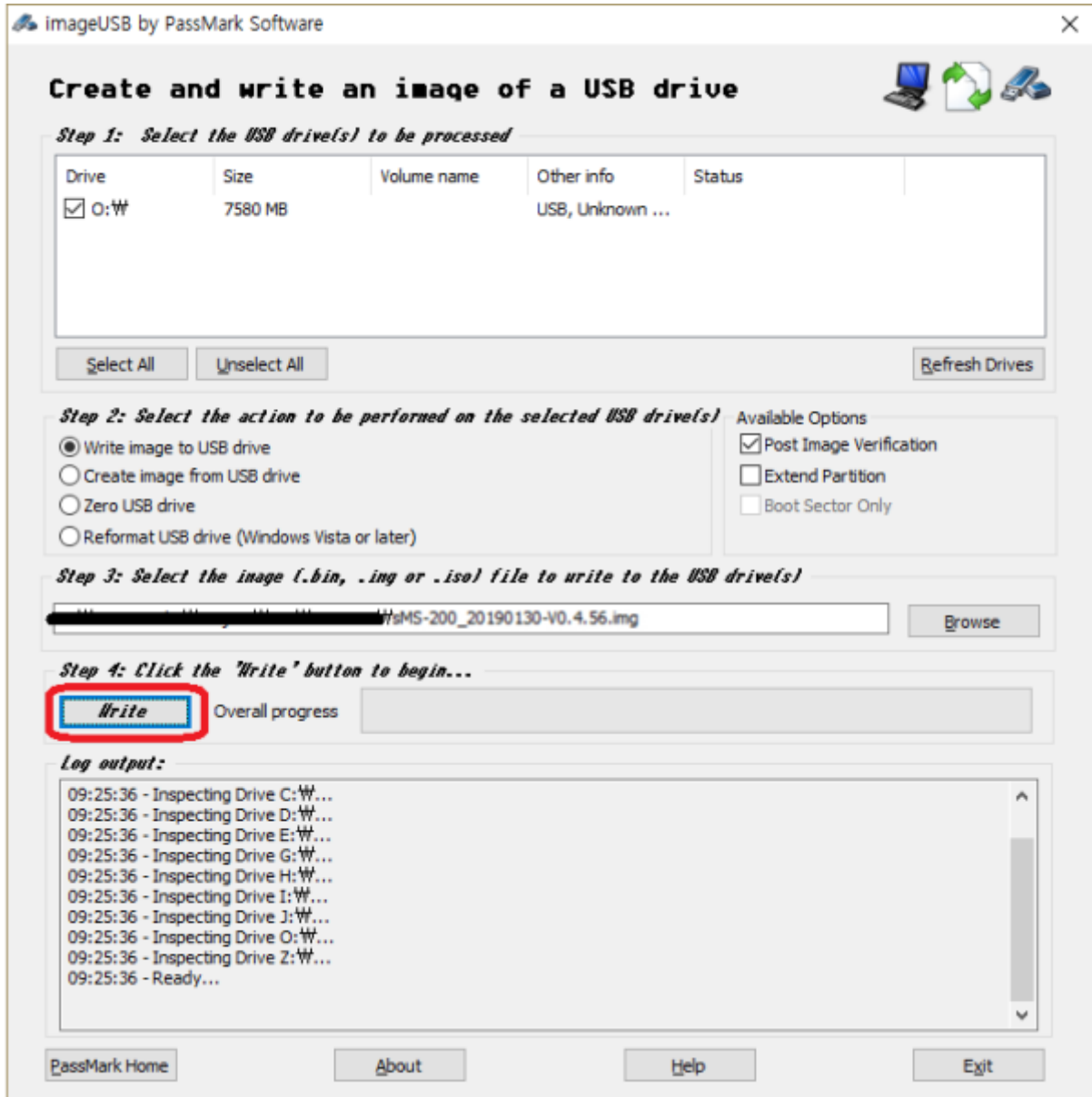


'Browse'



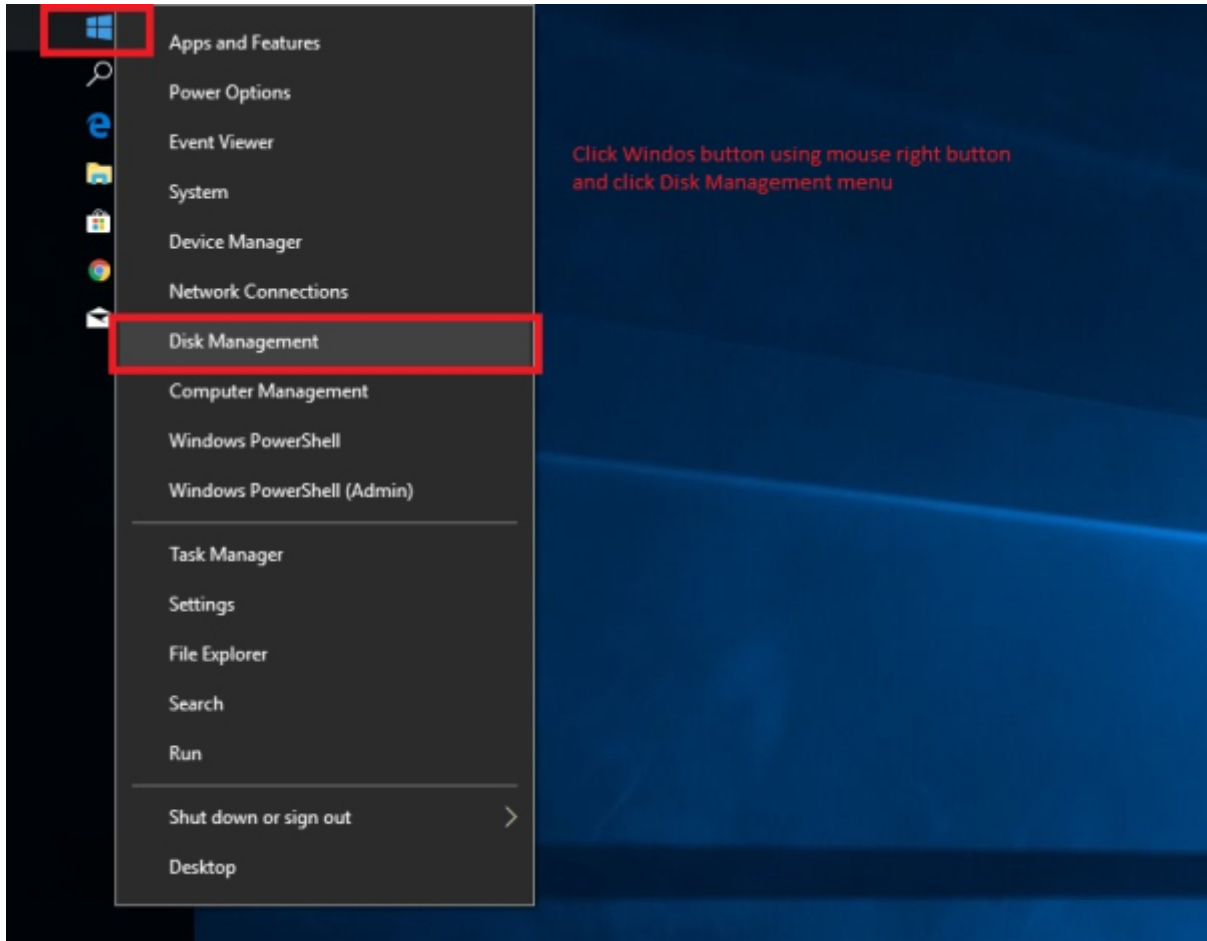
'Write'

SD



1. 가 SD SMS-200
2. SMS-200

SD



The screenshot shows the Windows Disk Management console. At the top, a table lists the system's volumes. Below this, a graphical view shows the layout of Disk 0 and Disk 1. A red rectangle highlights the Disk 1 section, which includes a 286 MB primary partition, a 244 MB primary partition, a 6.88 GB primary partition, and a 44 MB unallocated space.

Volume	Layout	Type	File System	Status	Capacity	Free Spa...	% Free
(C:)	Simple	Basic	NTFS	Healthy (B...	59.45 GB	29.60 GB	50 %
(Disk 0 partition 1)	Simple	Basic		Healthy (R...	450 MB	450 MB	100 %
(Disk 0 partition 2)	Simple	Basic		Healthy (E...	99 MB	99 MB	100 %
(Disk 1 partition 1)	Simple	Basic		Healthy (P...	286 MB	286 MB	100 %
(Disk 1 partition 2)	Simple	Basic		Healthy (P...	244 MB	244 MB	100 %
(Disk 1 partition 3)	Simple	Basic		Healthy (P...	6.88 GB	6.88 GB	100 %

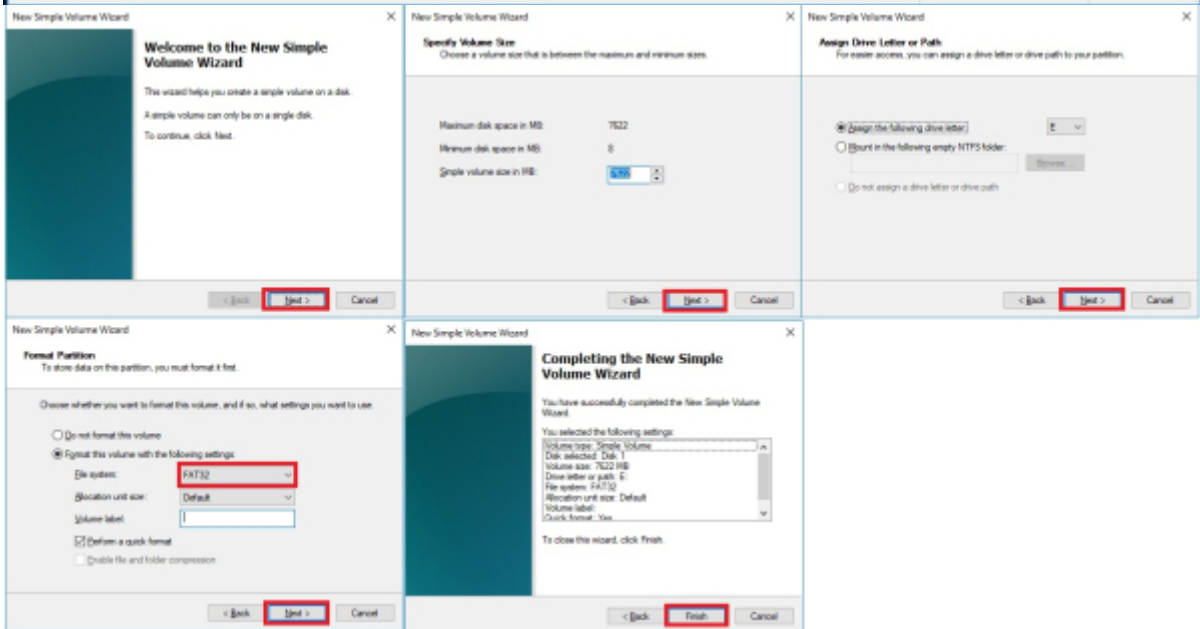
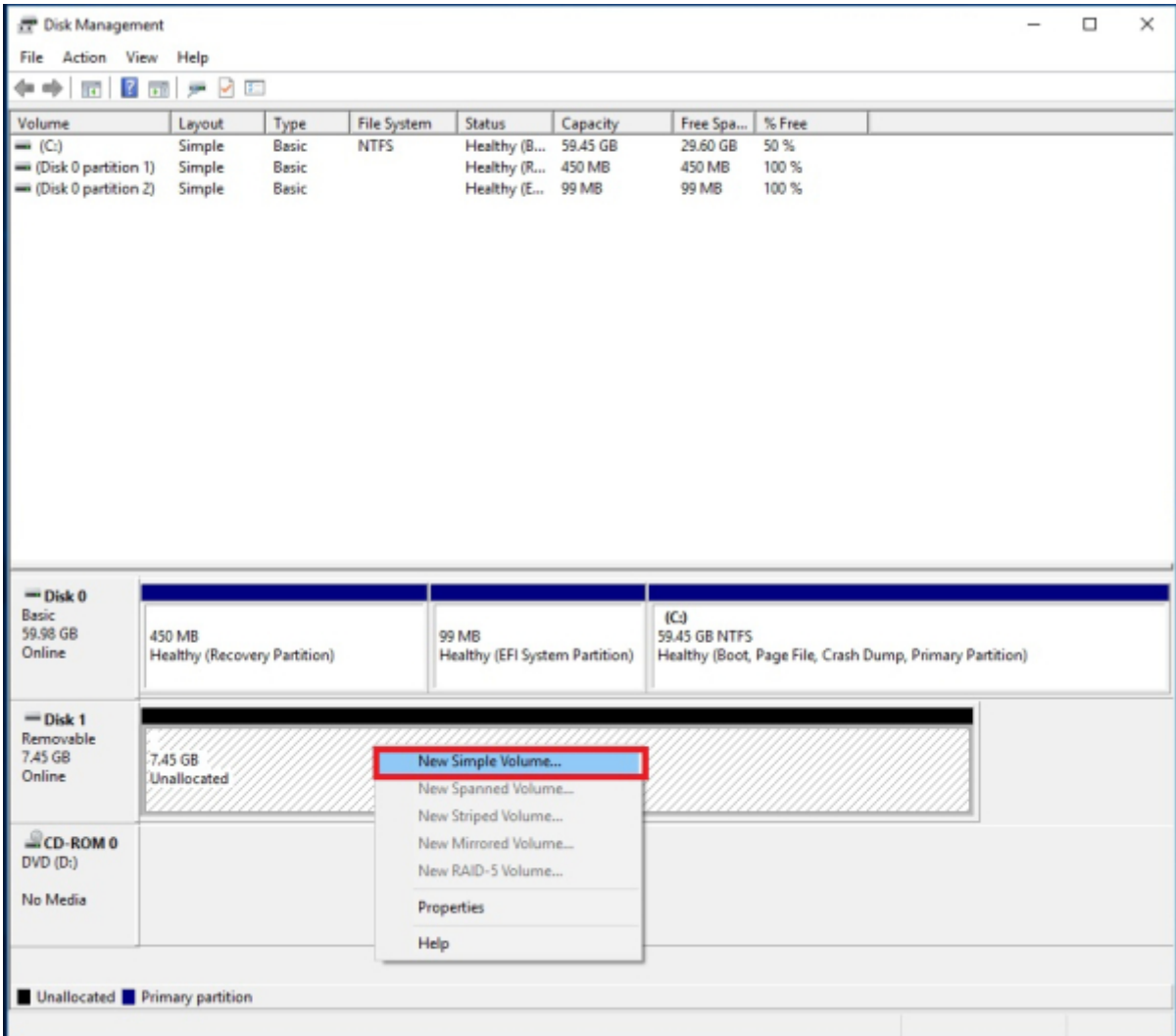
Disk	Capacity	Partition 1	Partition 2	Partition 3	Partition 4
Disk 0 Basic 59.98 GB Online	450 MB Healthy (Recovery Partition)	99 MB Healthy (EFI System Partition)	(C:) 59.45 GB NTFS Healthy (Boot, Page File, Crash Dump, Primary Partition)		
Disk 1 Removable 7.45 GB Online	286 MB Healthy (Primary Partition)	244 MB Healthy (Primary Partition)	6.88 GB Healthy (Primary Partition)	44 MB Unallocated	
CD-ROM 0 DVD (D:)	No Media				

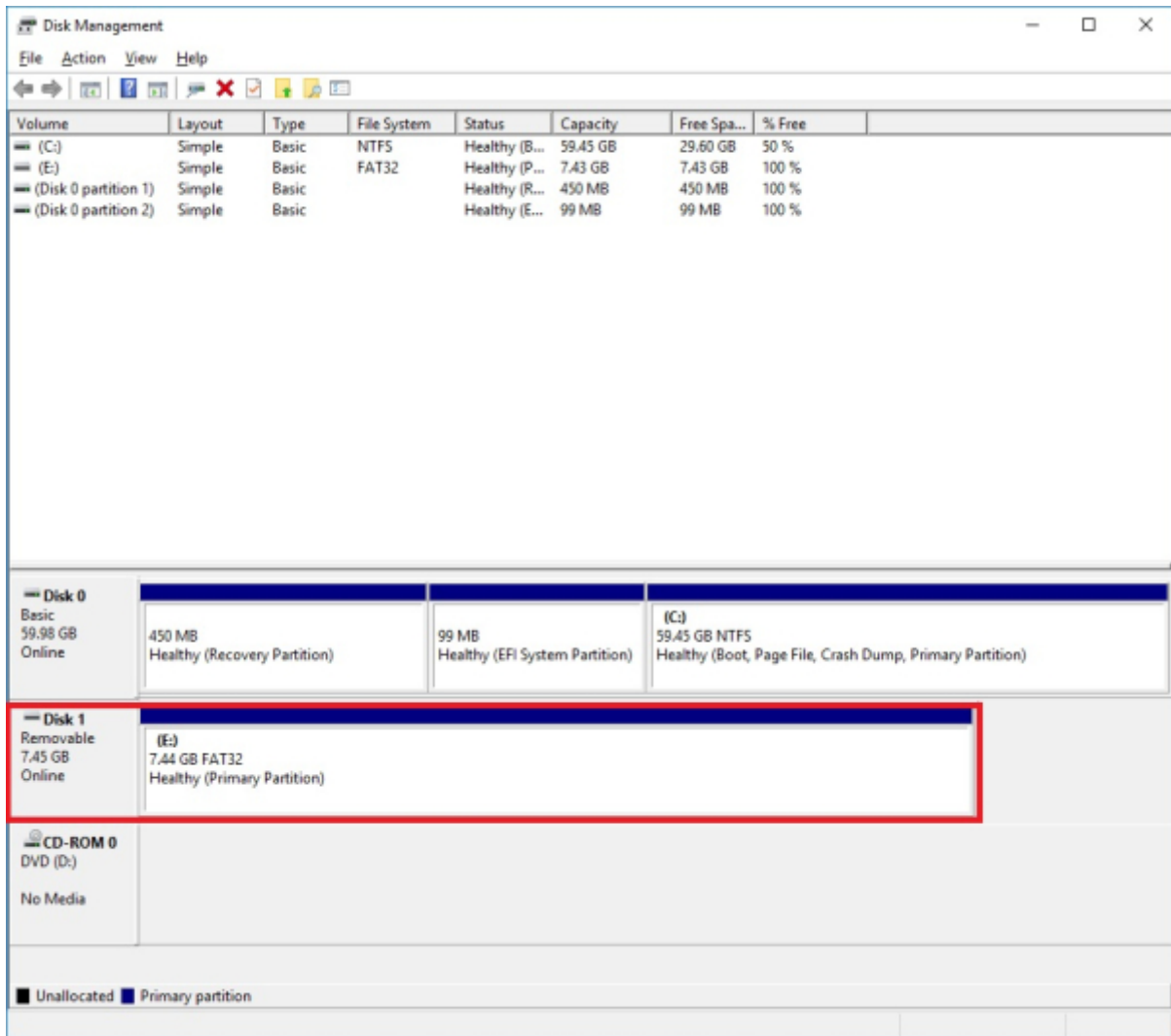
Legend: ■ Unallocated ■ Primary partition

The screenshot shows the Windows Disk Management utility. At the top, a table lists the system's volumes:

Volume	Layout	Type	File System	Status	Capacity	Free Spa...	% Free
(C:)	Simple	Basic	NTFS	Healthy (B...	59.45 GB	29.60 GB	50 %
(Disk 0 partition 1)	Simple	Basic		Healthy (R...	450 MB	450 MB	100 %
(Disk 0 partition 2)	Simple	Basic		Healthy (E...	99 MB	99 MB	100 %
(Disk 1 partition 1)	Simple	Basic		Healthy (P...	286 MB	286 MB	100 %
(Disk 1 partition 2)	Simple	Basic		Healthy (P...	244 MB	244 MB	100 %
(Disk 1 partition 3)	Simple	Basic		Healthy (P...	6.88 GB	6.88 GB	100 %

Below the table, the detailed view for Disk 1 (Removable, 7.45 GB) is shown. It contains four partitions: a 286 MB Primary Partition (shaded), a 244 MB Primary Partition, a 6.88 GB Primary Partition, and a 44 MB Unallocated space. A context menu is open over the 6.88 GB partition, with the 'Delete Volume...' option highlighted in red. A red text box on the right side of the screenshot reads: 'Click right button of mouse Delete Volume 3 patitions of Disk1(MSD CARD) It will be changed to 1 of unallocated disk'.



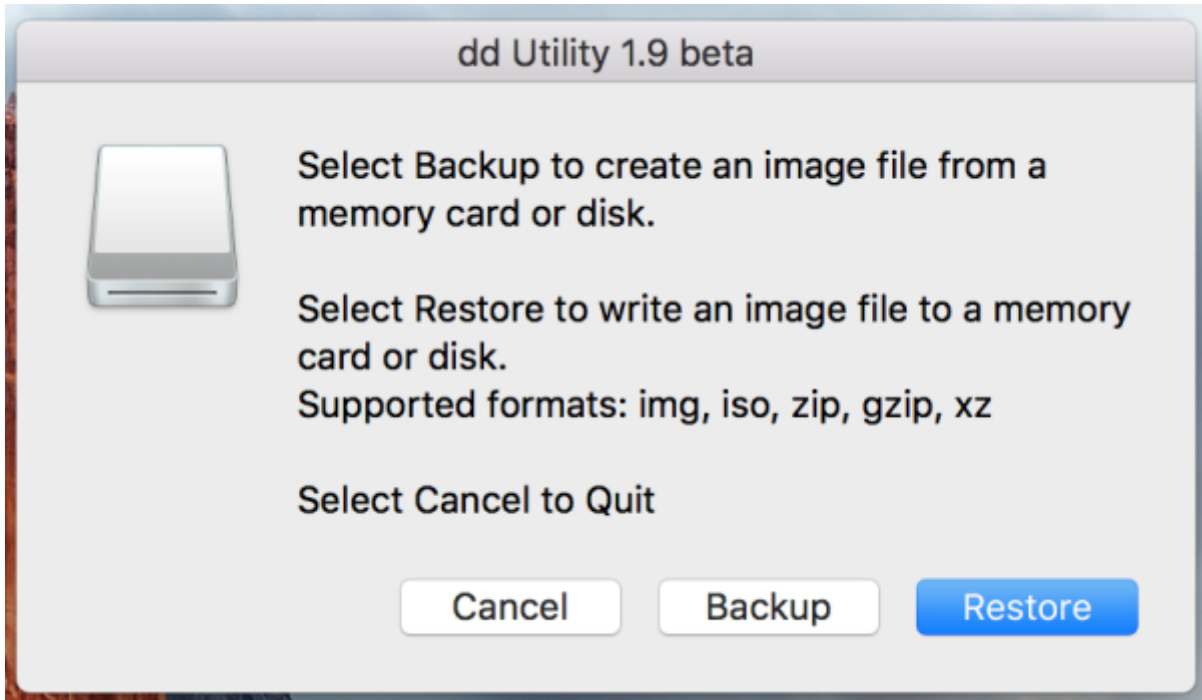


macOS

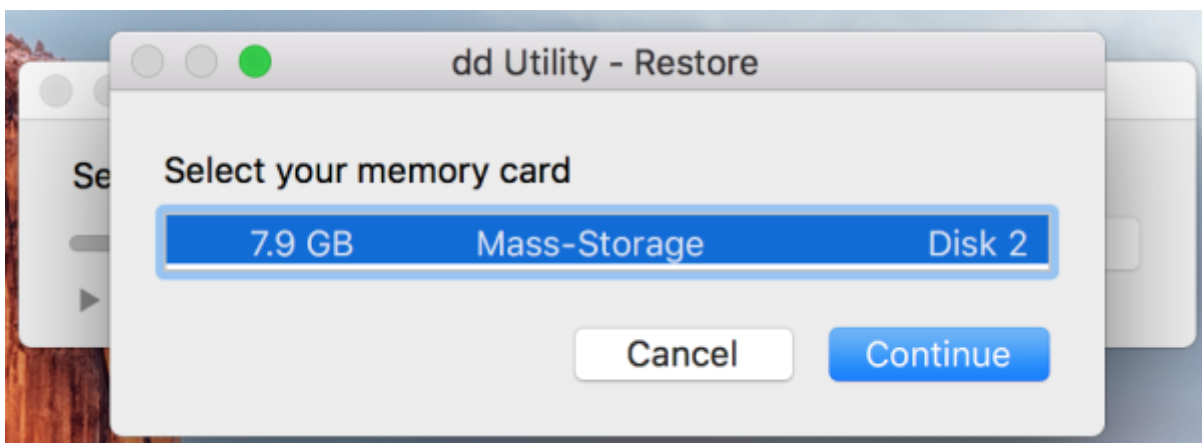
1. SD (3.0 GB .gz) new micro SD card image
2. dd-utility . <https://www.thefanclub.co.za> github
3. SMS-200 SD PC SD

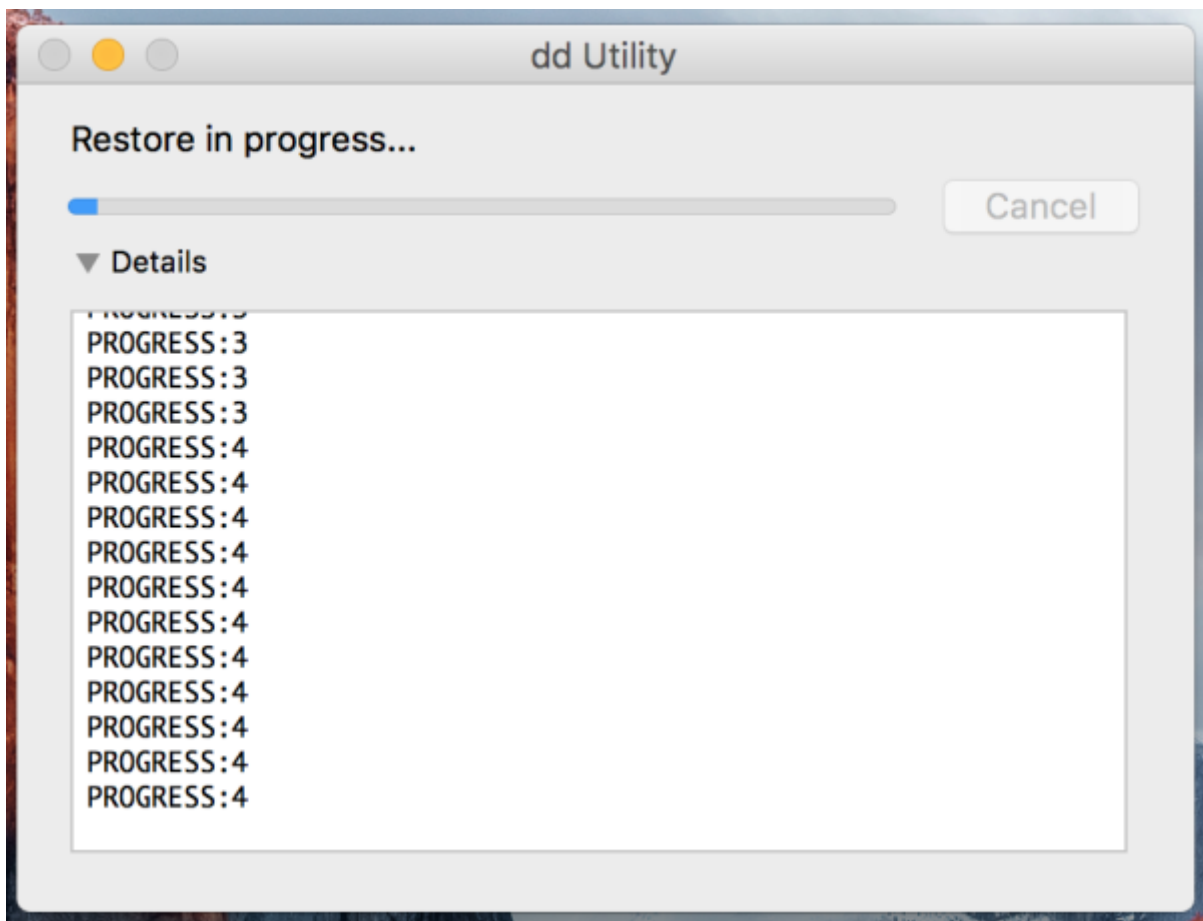
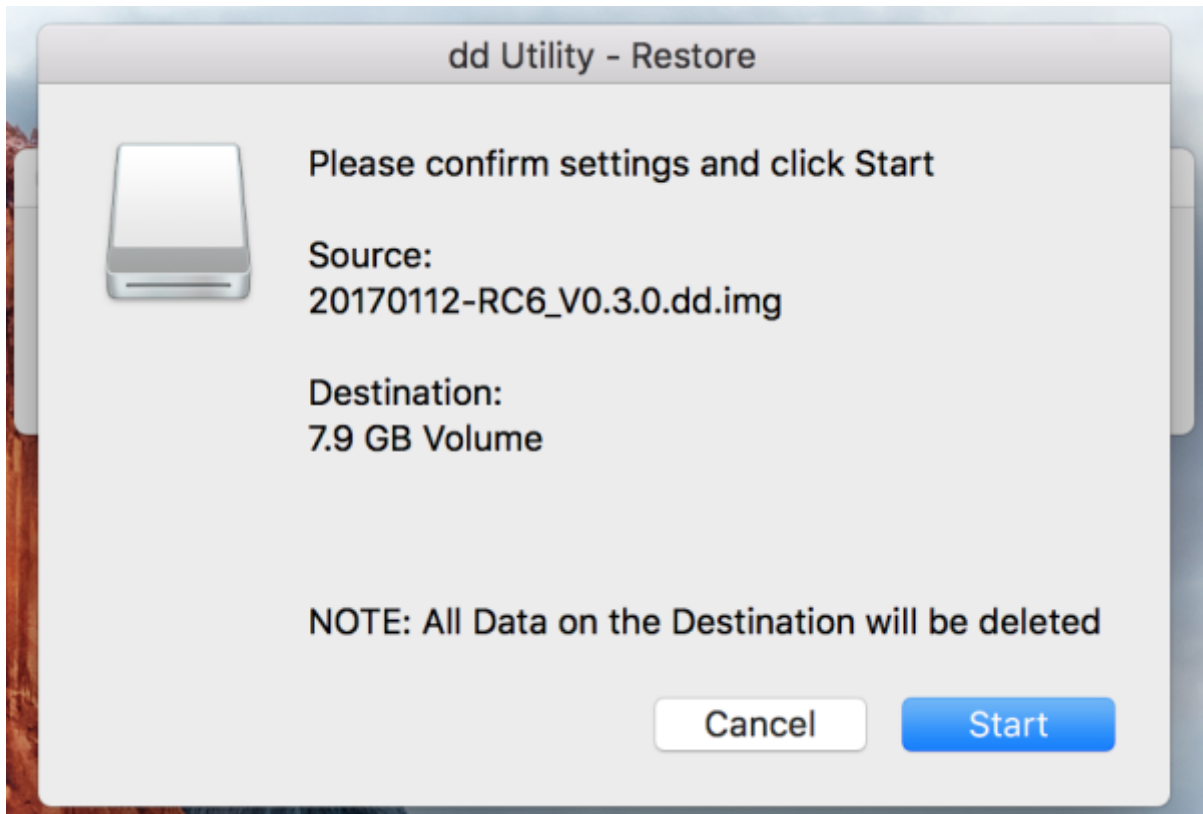
Start Restore

dd-utility 'Restore' .img



SD





sMS-200

SD

dd-utility

- [imageUSB for Windows](#)
- [dd-utility for macOS](#)

micro SD card

- [Eunhasu V0.4.22](#)
- [Eunhasu V0.5.1](#)
- [Eunhasu V0.5.2](#)
- [Eunhasu V0.5.31](#)
- [Eunhasu V0.5.41](#)
- [Eunhasu V0.5.51](#)
- [Eunhasu V0.5.62](#)
- [Eunhasu V0.5.7](#)
- [Eunhasu V0.5.8](#)
- [Eunhasu V0.5.9](#)

From:

<https://www.docs.sotm-audio.com/> - **SOTM docs**

Permanent link:

https://www.docs.sotm-audio.com/doku.php?id=ko:eunhasu:burn_sdcard_image&rev=1748866980

Last update: **2025/06/02 08:23**

