

mSD

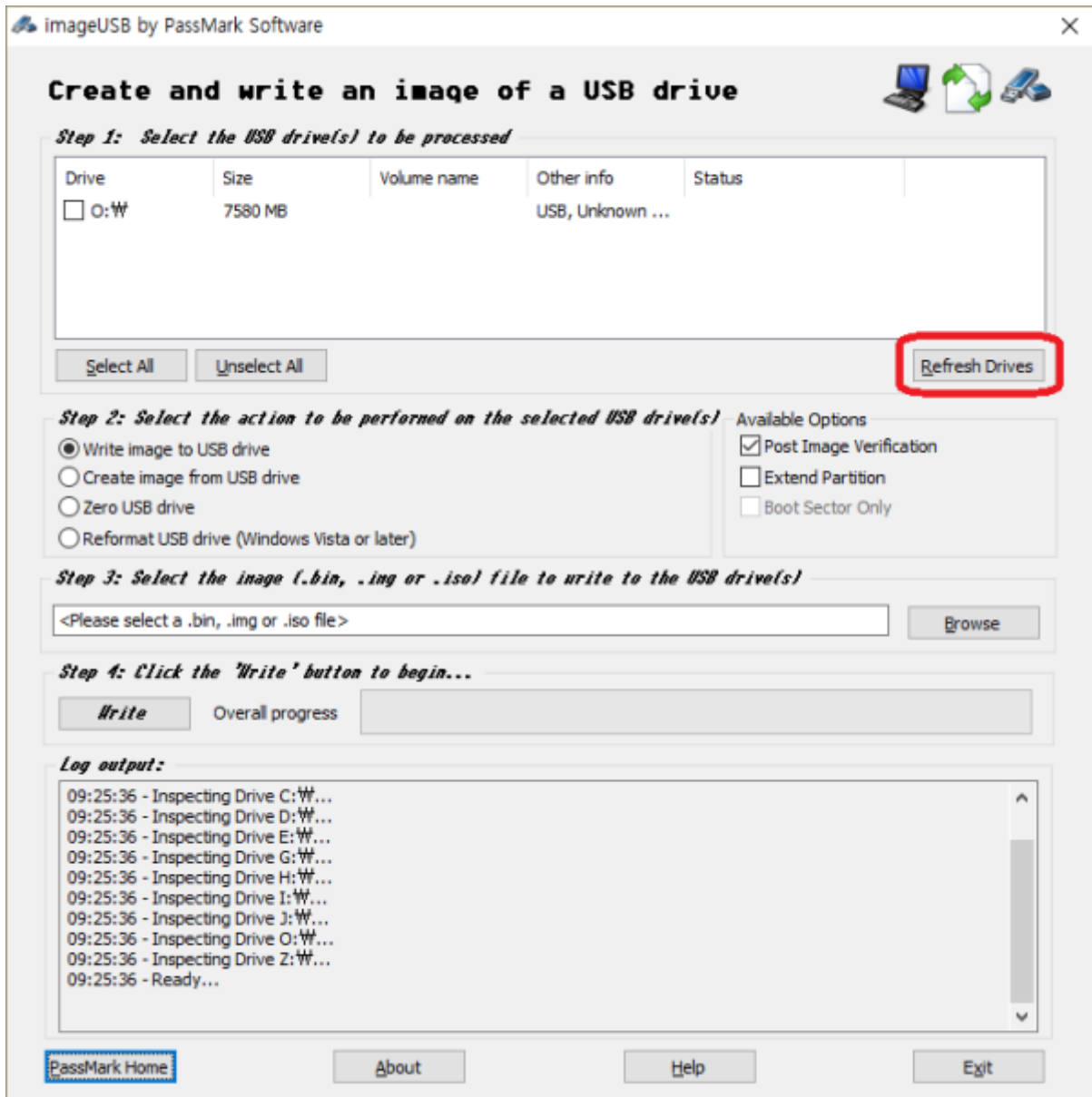
micro SD

Windows

1. SD
.(3.0 GB .gz) [new micro SD card image](#)
2. SD
.(7.9 GB .img)
3. PC [imageUSB](#) ,
4. SMS-200 SD
SD PC .

imageUSB

[imageUSB](#) , USB 가 ,
'Refresh Drives' .



USB

USB



'Browse'



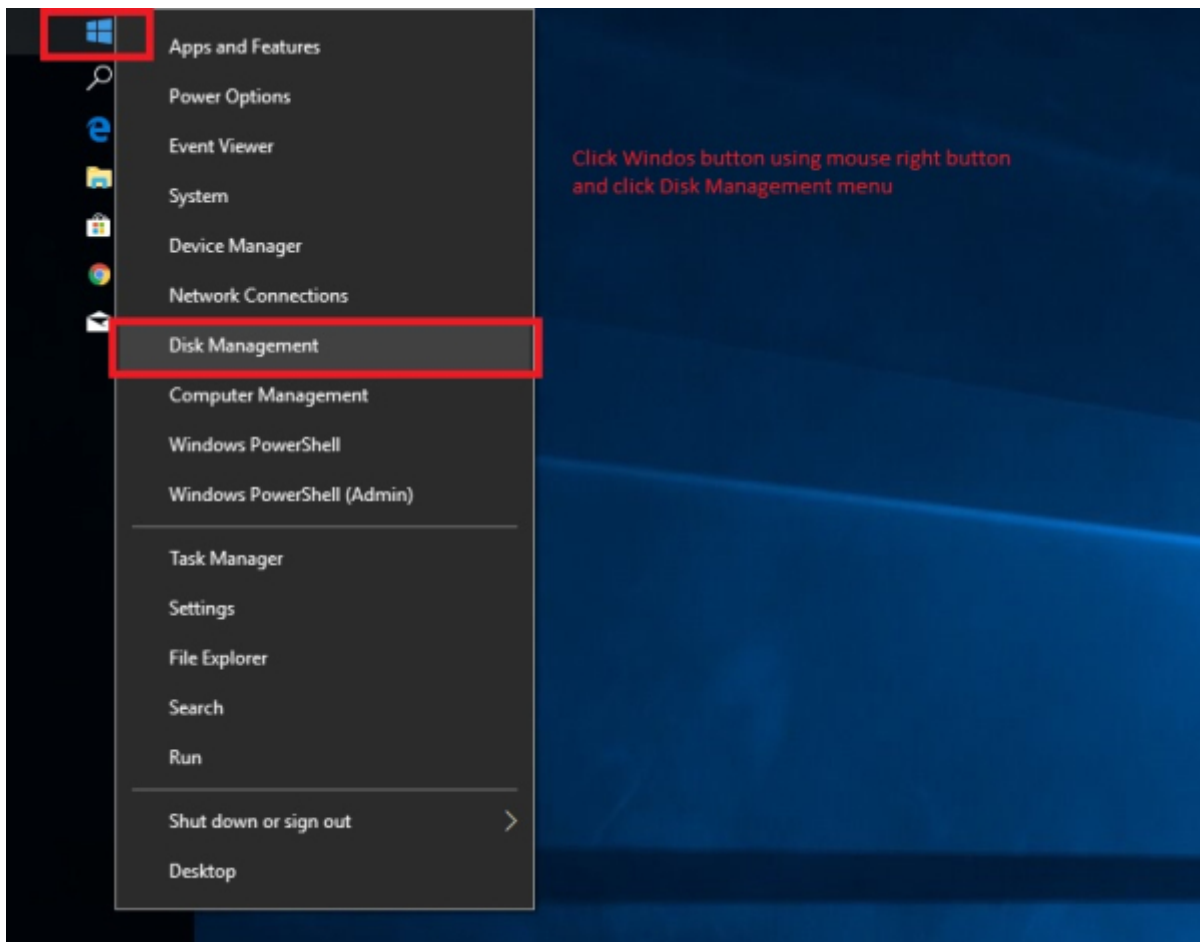
'Write'

SD



- 1. 가 SD SMS-200
- 2. SMS-200

SD



The screenshot shows the Windows Disk Management console. At the top, a table lists the system's volumes. Below this, the physical disks are shown with their partitions and file systems. A red box highlights the Disk 1 section, which is a removable drive with a total capacity of 7.45 GB. It contains three primary partitions: a 286 MB primary partition, a 244 MB primary partition, and a 6.88 GB primary partition, followed by a 44 MB unallocated space.

Volume	Layout	Type	File System	Status	Capacity	Free Spa...	% Free
(C:)	Simple	Basic	NTFS	Healthy (B...	59.45 GB	29.60 GB	50 %
(Disk 0 partition 1)	Simple	Basic		Healthy (R...	450 MB	450 MB	100 %
(Disk 0 partition 2)	Simple	Basic		Healthy (E...	99 MB	99 MB	100 %
(Disk 1 partition 1)	Simple	Basic		Healthy (P...	286 MB	286 MB	100 %
(Disk 1 partition 2)	Simple	Basic		Healthy (P...	244 MB	244 MB	100 %
(Disk 1 partition 3)	Simple	Basic		Healthy (P...	6.88 GB	6.88 GB	100 %

Disk	Capacity	Partition 1	Partition 2	Partition 3	Unallocated
Disk 0	59.98 GB	450 MB Healthy (Recovery Partition)	99 MB Healthy (EFI System Partition)	(C:) 59.45 GB NTFS Healthy (Boot, Page File, Crash Dump, Primary Partition)	
Disk 1	7.45 GB	286 MB Healthy (Primary Partition)	244 MB Healthy (Primary Partition)	6.88 GB Healthy (Primary Partition)	44 MB Unallocated







macOS

1. SD (3.0 GB .gz) new micro SD card image
2. dd-utility . <https://www.thefanclub.co.za> github
3. SMS-200 SD PC SD

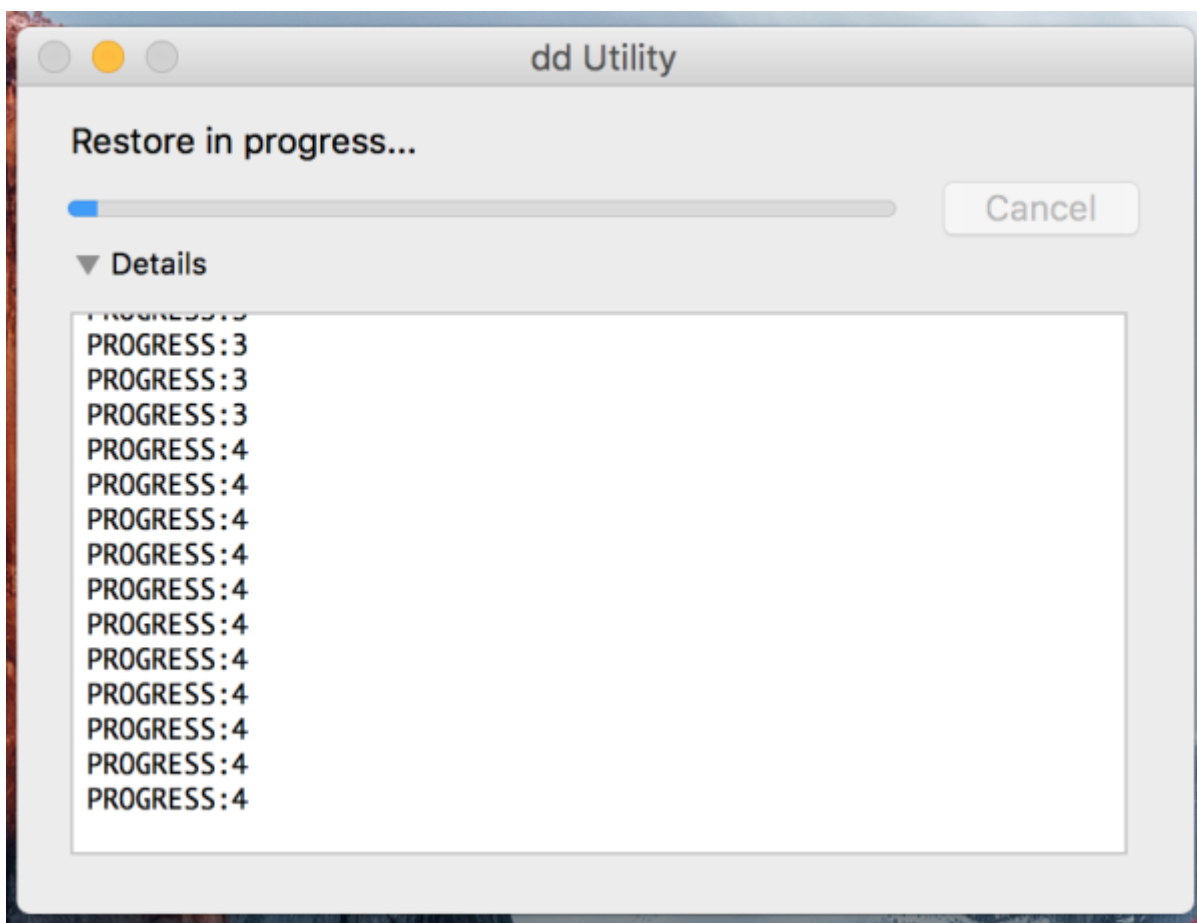
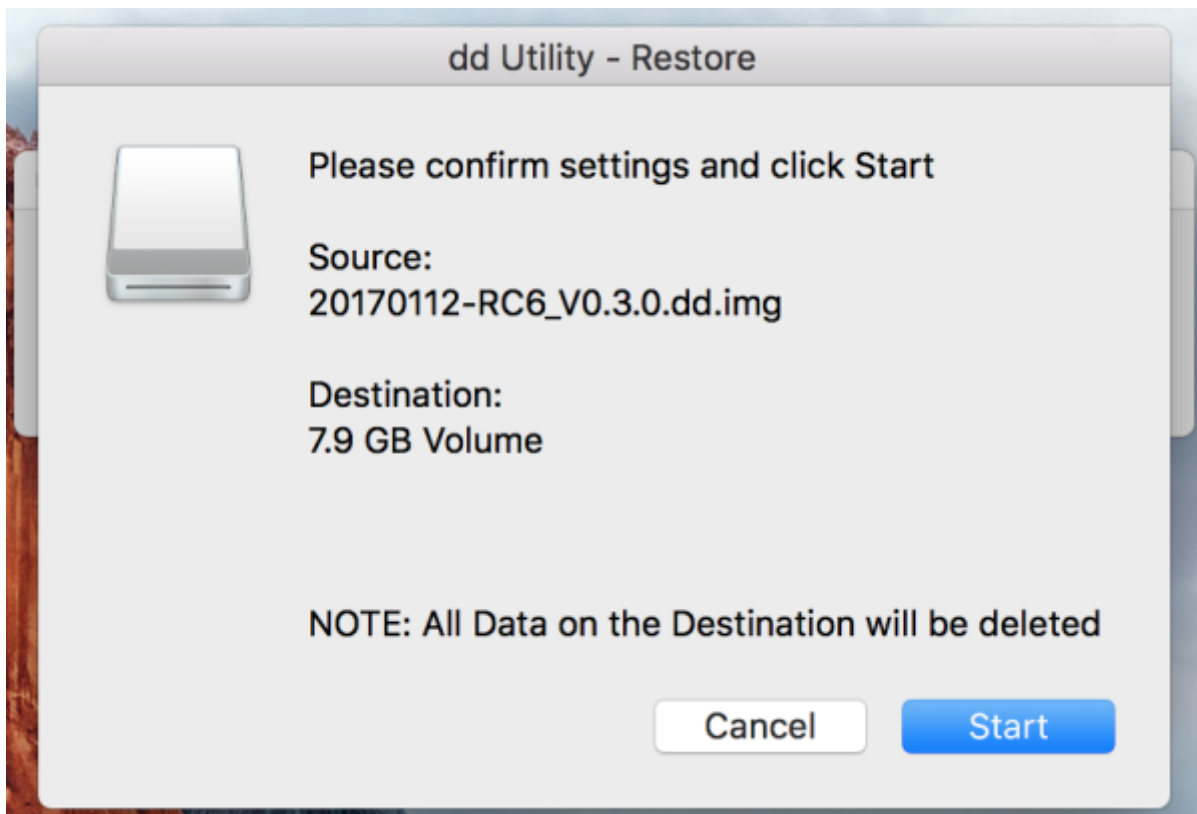
Start Restore

dd-utility 'Restore' .img



SD





sMS-200

SD

dd-utility

- [imageUSB for Windows](#)
- [dd-utility for macOS](#)

micro SD card

- [Eunhasu V0.4.22](#)
- [Eunhasu V0.5.1](#)
- [Eunhasu V0.5.2](#)
- [Eunhasu V0.5.31](#)
- [Eunhasu V0.5.41](#)
- [Eunhasu V0.5.51](#)
- [Eunhasu V0.5.62](#)
- [Eunhasu V0.5.7](#)

From:

<https://www.docs.sotm-audio.com/> - **SOTM docs**

Permanent link:

https://www.docs.sotm-audio.com/doku.php?id=ko:eunhasu:burn_sdcard_image&rev=1734401532

Last update: **2024/12/16 21:12**

