

# mSD

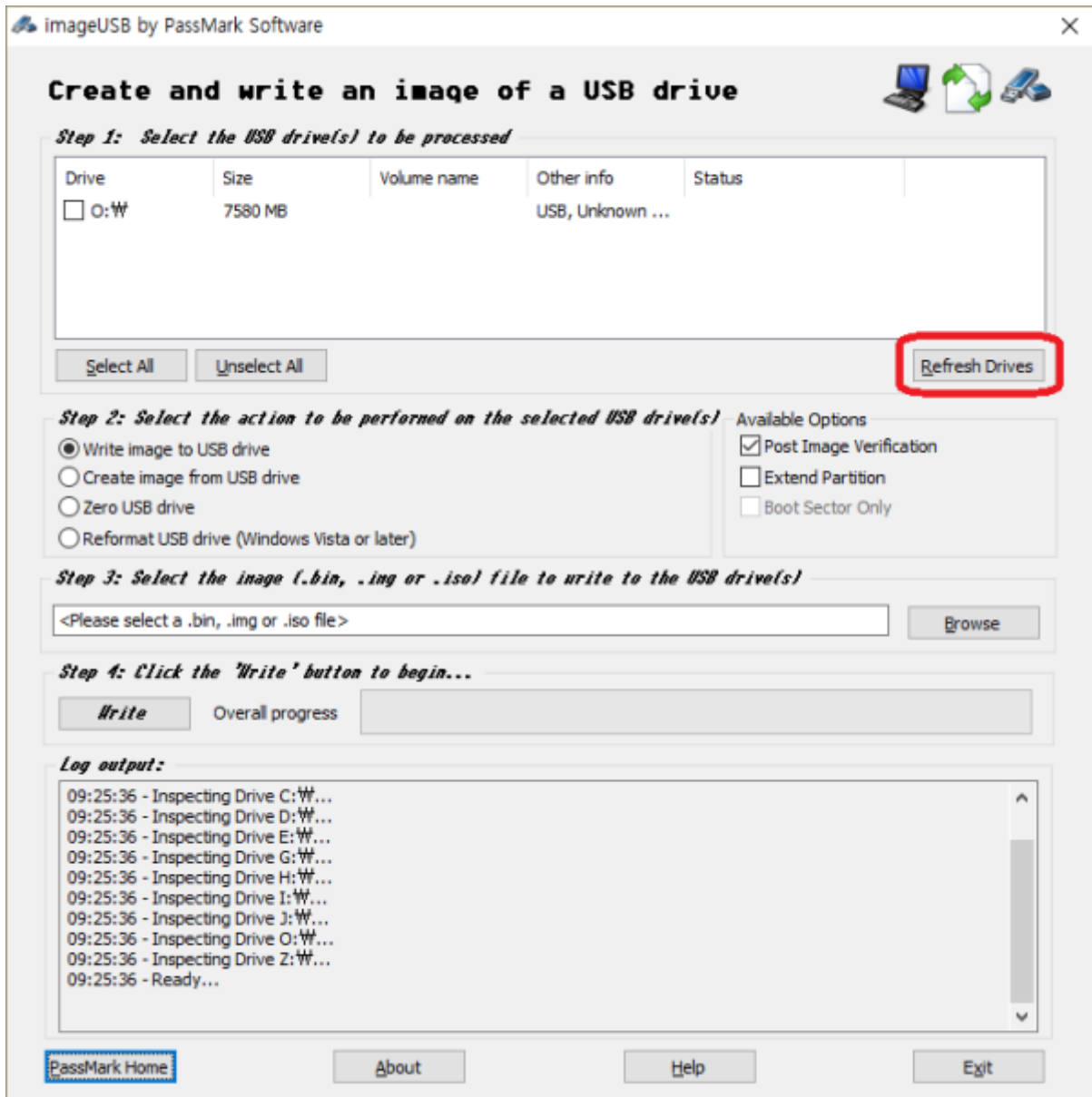
micro SD

## Windows

1. SD  
.( 3.0 GB .gz ) [new micro SD card image](#)
2. SD  
.( 7.9 GB .img )
3. PC [imageUSB](#) ,
4. SMS-200 SD  
SD PC .

## imageUSB

[imageUSB](#) , USB 가 ,  
'Refresh Drives' .



USB

USB



'Browse'



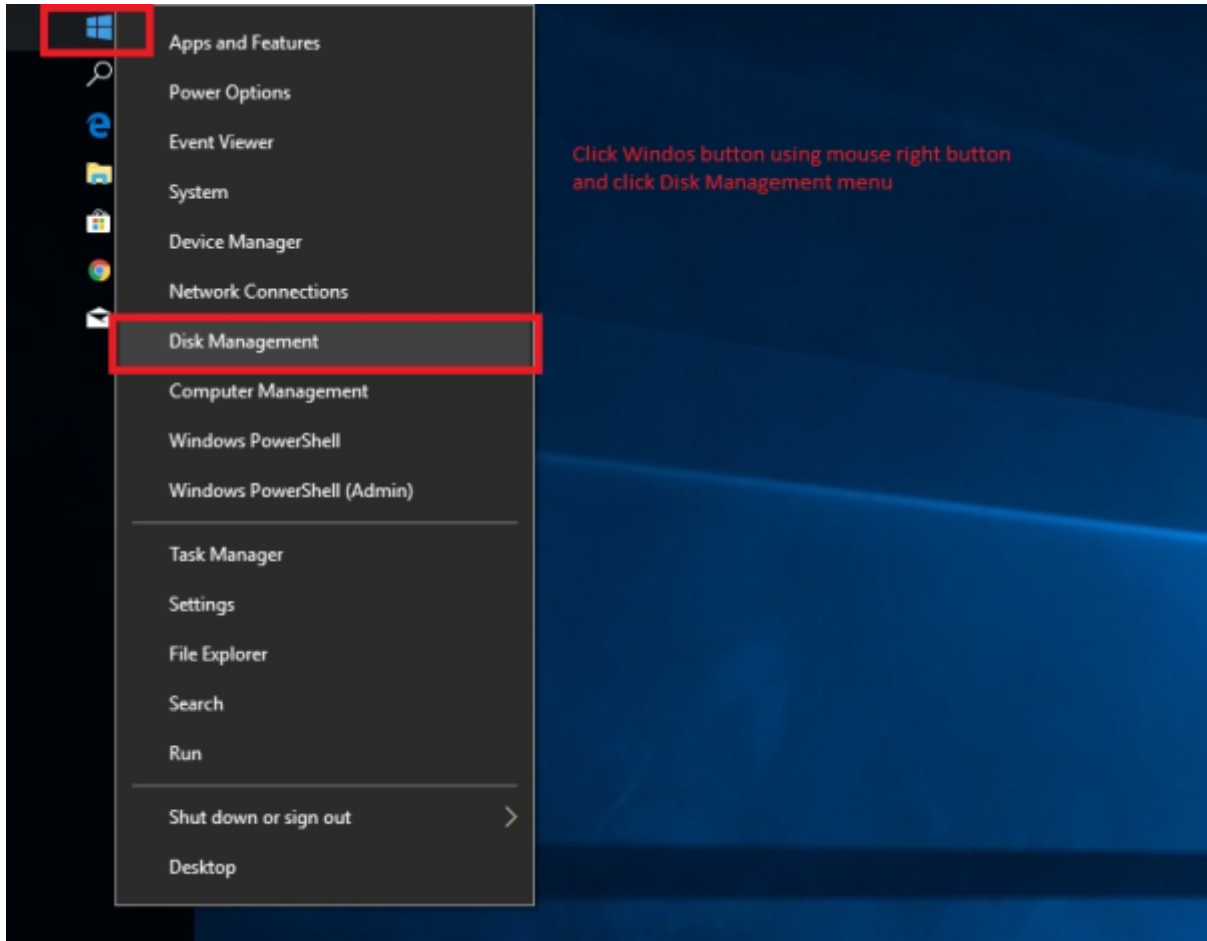
'Write'

SD



1. 가 SD SMS-200
2. SMS-200

## SD



The screenshot shows the Windows Disk Management console. At the top, a table lists the system's volumes. Below this, the graphical representation of Disk 0 and Disk 1 is shown. Disk 0 is a basic disk with a total capacity of 59.98 GB, containing a 450 MB Recovery Partition, a 99 MB EFI System Partition, and a 59.45 GB NTFS primary partition (C:). Disk 1 is a removable disk with a total capacity of 7.45 GB, containing three 286 MB, 244 MB, and 6.88 GB primary partitions, and a 44 MB unallocated space. A red box highlights the Disk 1 section.

Volume	Layout	Type	File System	Status	Capacity	Free Spa...	% Free
(C:)	Simple	Basic	NTFS	Healthy (B...	59.45 GB	29.60 GB	50 %
(Disk 0 partition 1)	Simple	Basic		Healthy (R...	450 MB	450 MB	100 %
(Disk 0 partition 2)	Simple	Basic		Healthy (E...	99 MB	99 MB	100 %
(Disk 1 partition 1)	Simple	Basic		Healthy (P...	286 MB	286 MB	100 %
(Disk 1 partition 2)	Simple	Basic		Healthy (P...	244 MB	244 MB	100 %
(Disk 1 partition 3)	Simple	Basic		Healthy (P...	6.88 GB	6.88 GB	100 %

Disk	Capacity	Partition 1	Partition 2	Partition 3	Partition 4
Disk 0 Basic 59.98 GB Online	450 MB Healthy (Recovery Partition)	99 MB Healthy (EFI System Partition)	(C:) 59.45 GB NTFS Healthy (Boot, Page File, Crash Dump, Primary Partition)		
Disk 1 Removable 7.45 GB Online	286 MB Healthy (Primary Partition)	244 MB Healthy (Primary Partition)	6.88 GB Healthy (Primary Partition)	44 MB Unallocated	

■ Unallocated ■ Primary partition



The screenshot shows the Windows Disk Management console. At the top, a table lists the following volumes:

Volume	Layout	Type	File System	Status	Capacity	Free Spa...	% Free
(C:)	Simple	Basic	NTFS	Healthy (B...	59.45 GB	29.60 GB	50 %
(Disk 0 partition 1)	Simple	Basic		Healthy (R...	450 MB	450 MB	100 %
(Disk 0 partition 2)	Simple	Basic		Healthy (E...	99 MB	99 MB	100 %

Below the table, the details for Disk 0 and Disk 1 are shown. Disk 1 is a 7.45 GB Removable drive that is currently unallocated. A context menu is open over the unallocated space, with 'New Simple Volume...' highlighted in red.

The sequence of screenshots shows the 'New Simple Volume Wizard' in progress:

- Welcome to the New Simple Volume Wizard:** The first step, where the user is introduced to the wizard.
- Specify Volume Size:** The user chooses a volume size between 0 MB and 7622 MB. The 'Simple volume size in MB' is set to 5385.
- Assign Drive Letter or Path:** The user chooses to 'Assign the following drive letter', with 'E' selected.
- Format Partition:** The user chooses to 'Format this volume with the following settings'. The 'File system' is set to FAT32.
- Completing the New Simple Volume Wizard:** The final step, showing a summary of the settings: Volume type: Simple Volume, Disk selected: Disk 1, Volume size: 7622 MB, Drive letter or path: E, File system: FAT32, Allocation unit size: Default, Volume label, Quick-format: Yes.

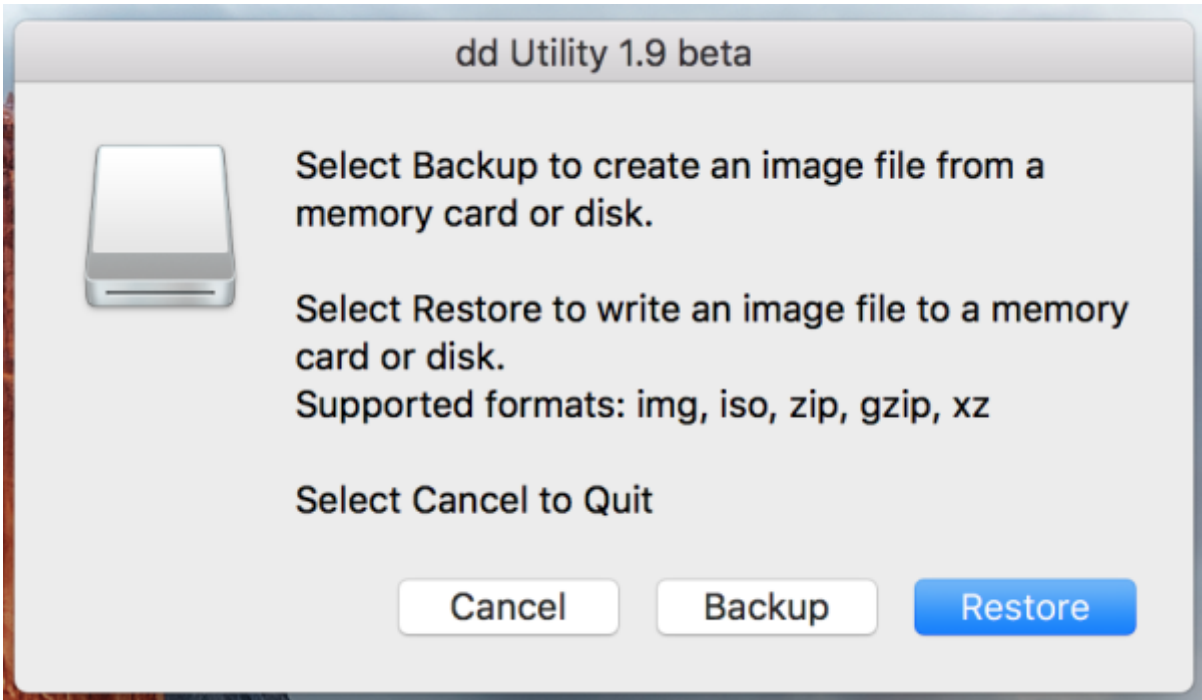


## macOS

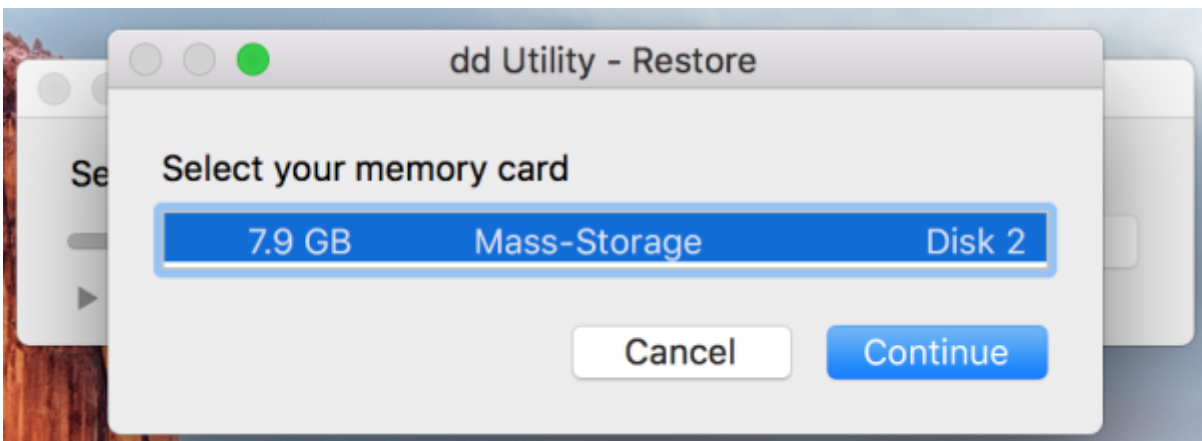
1. SD ( 3.0 GB .gz ) new micro SD card image
2. dd-utility . <https://www.thefanclub.co.za> github
3. SMS-200 SD PC SD

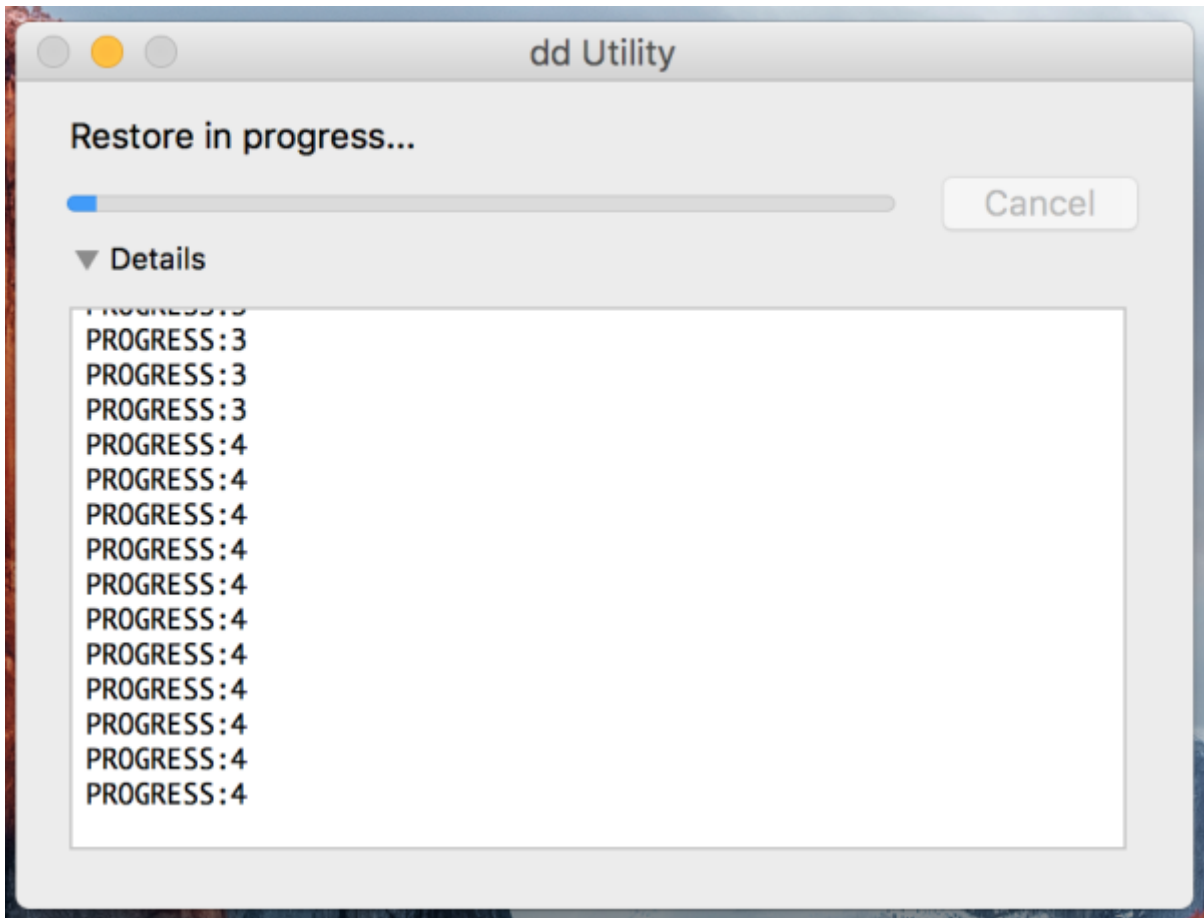
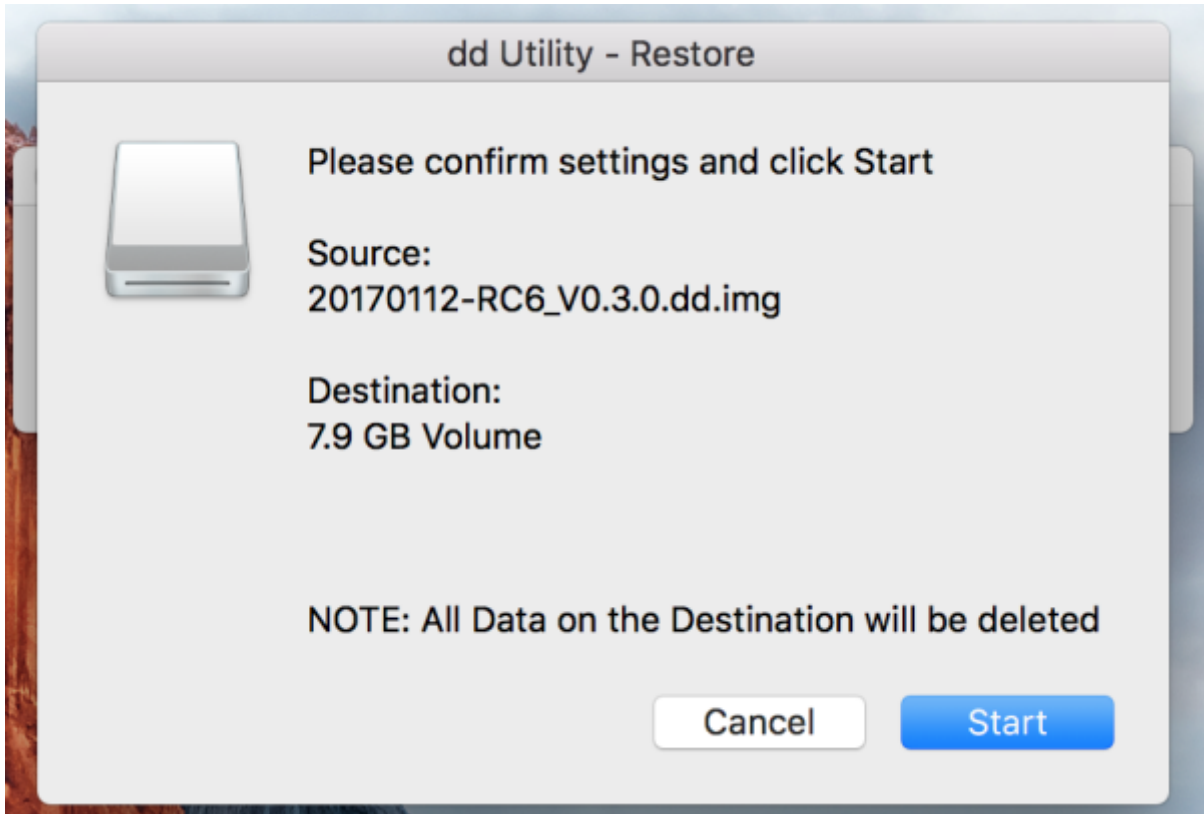
## Start Restore

dd-utility 'Restore' .img



SD





sMS-200

SD

## dd-utility

- [imageUSB for Windows](#)
- [dd-utility for macOS](#)

## micro SD card

- [Eunhasu V0.4.22](#)
- [Eunhasu V0.5.1](#)
- [Eunhasu V0.5.2](#)
- [Eunhasu V0.5.31](#)
- [Eunhasu V0.5.41](#)
- [Eunhasu V0.5.51](#)
- [Eunhasu V0.5.62](#)

From:

<https://www.docs.sotm-audio.com/> - **SOTM docs**

Permanent link:

[https://www.docs.sotm-audio.com/doku.php?id=ko:eunhasu:burn\\_sdcard\\_image&rev=1728953773](https://www.docs.sotm-audio.com/doku.php?id=ko:eunhasu:burn_sdcard_image&rev=1728953773)

Last update: **2024/10/14 20:56**

