

Squeezelite / Logitech Media Server

Squeezelite is a network music player which could be used with Logitech Media Server(aka. LMS). Eunhasu has LMS inside of itself which is available of Tidal, Qobuz and internet radio.

Squeezelite config

Output name config

Name sMS-200-USB
Enter Squeezelite output name

Audio device config

SOTM USB Audio 2.0 S20

Setting mode Custom
DSD mode DoP
Buffer time 40
Period count 4
Sample format 32
Max samplerate 192000
Internal buffer 4096

Select Audio device and set squeezelite config. Empty is default value. When you use 'custom' setting mode, please refer to DAC information which link is located at bottom of this page.

Clear artwork.db
Delete LogitechMediaServer artwork database file. You should rescan in LMS to generate deleted file.

Remove config cache
Delete all configuration cache file.

Save changes Cancel Uninstall

Squeezelite information
Logitech Media Server version : 7.9.0
Squeezelite version : 1.8.7
DAC information

- **Name:** A name of Squeezelite device appears on LMS. This could be changed if you would newly name on it.
- **Audio device config:** Select a radio button of USB DAC which is going to be used and click 'Save changes' to use the USB DAC.
 - **Setting mode:** If you select the 'Default', the audio device is automatically set. If you select 'Custom', you can set up your own audio device.
 - **DSD mode:** Set the playback method to DoP or Native DSD. If you set to Native, make sure your DAC supports native DSD playback.
 - **Buffer time:** Set the buffer length of music file data to be transmitted to the audio device in microseconds.
 - **Period count:** Set the transmission period of the music file data of the audio device.
 - **Sample format:** Set the music file transmission format (sample format) supported by the connected audio device. (Hovering the mouse cursor over the text box will display the maximum sample format of the connected Audio device.)
 - **Max sample rate:** Set the sample rate for the connected audio device which it can be supportive. (Hovering the mouse cursor over the text box displays the maximum sample rate.)
 - **Internal buffer:** Specify the maximum buffer size in kilobytes for audio processing.
- **Clear artwork.db:** Use when icons in LMS shatter. You should rescan in LMS after that.
- **Remove config cache:** Delete the LMS configuration cache files.

Configuration

Check your DAC's capability.

```

← → ↻ ⓘ eunhasu.local/dacinfo/

**** List of PLAYBACK Hardware Devices ****
card 0: S20 [S0tM USB Audio 2.0], device 0: USB Audio [USB Audio]
  Subdevices: 1/1
  Subdevice #0: subdevice #0

-----

Bus 004 Device 001: ID 1d6b:0001 Linux Foundation 1.1 root hub
Bus 002 Device 003: ID 20b1:2102 XMOS Ltd
Bus 002 Device 001: ID 1d6b:0002 Linux Foundation 2.0 root hub
Bus 003 Device 001: ID 1d6b:0001 Linux Foundation 1.1 root hub
Bus 001 Device 002: ID 05e3:0610 Genesys Logic, Inc. 4-port hub
Bus 001 Device 001: ID 1d6b:0002 Linux Foundation 2.0 root hub

-----

0 [S20          ]: USB-Audio - S0tM USB Audio 2.0
                   S0tM S0tM USB Audio 2.0 at usb-1c1c000.usb-1, high speed

-----

S0tM S0tM USB Audio 2.0 at usb-1c1c000.usb-1, high speed : USB Audio

Playback:
Status: Stop
Interface 1
  Altset 1
  Format: S32_LE
  Channels: 2
  Endpoint: 1 OUT (ASYNC)
  Rates: 44100, 48000, 88200, 96000, 176400, 192000, 352800, 384000
  Data packet interval: 125 us

```

Input 'Max samplerate' and 'Sample format' by DAC information. Please refer to highlighted part.

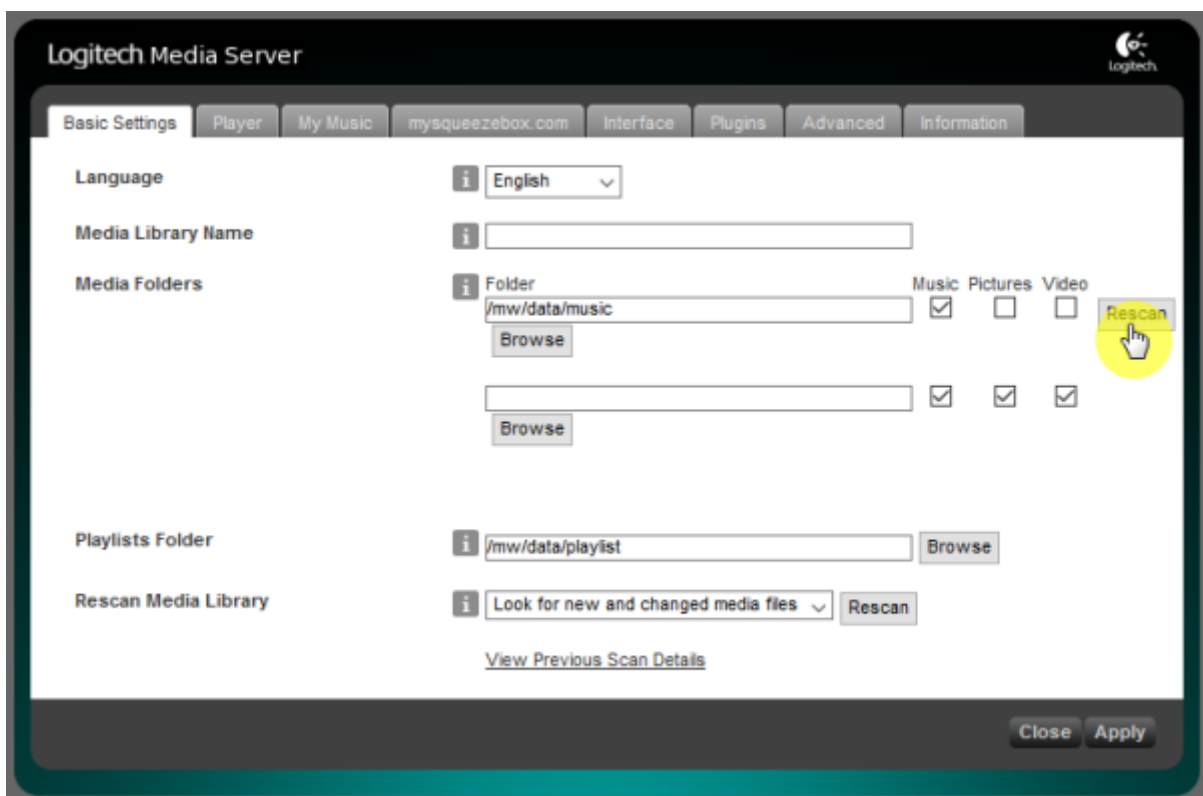
S0tM USB Audio 2.0		S20	
DSD mode	None	Buffer time	80
Max samplerate	384000	Internal buffer	4096
		Period count	16
		Sample format	32

LMS library rescan guide

Move on to Settings menu page.



Click "Rescan" button to start scan on Basic Settings tab.



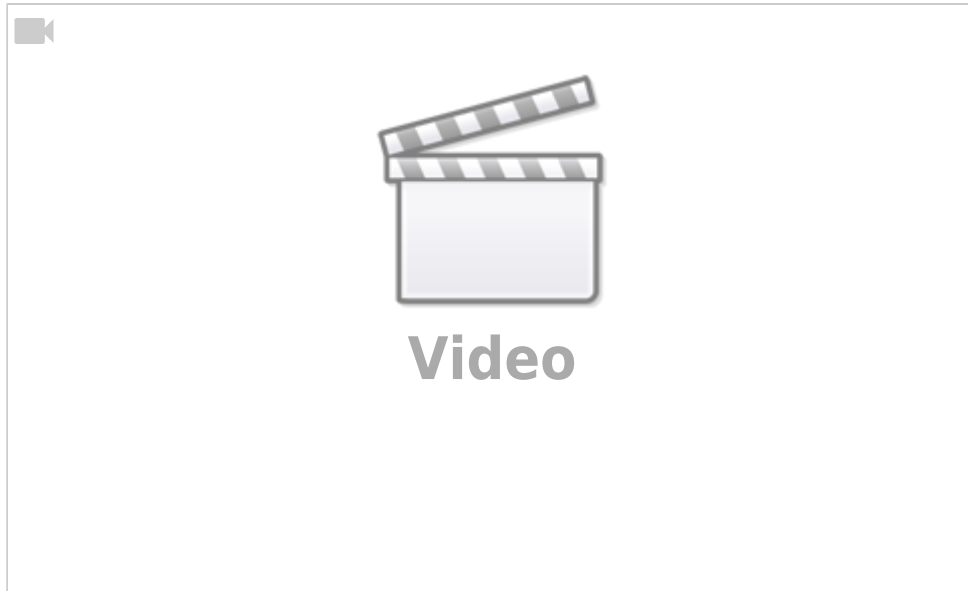
Click "Scanning - View Progress" link at bottom of page if you'd like to see scanning states.



Scanning states screen.



How to use Tidal in LMS http://docs.sotm-audio.com/doku.php?id=how_to_use_tidal_in_lms



Video: how to install and set Spotify plugin in LMS; Spotify premium account required.

From:

<https://www.docs.sotm-audio.com/> - **SOTM docs**

Permanent link:

<https://www.docs.sotm-audio.com/doku.php?id=en:squeezelite&rev=1562751072>

Last update: **2019/07/10 05:31**

