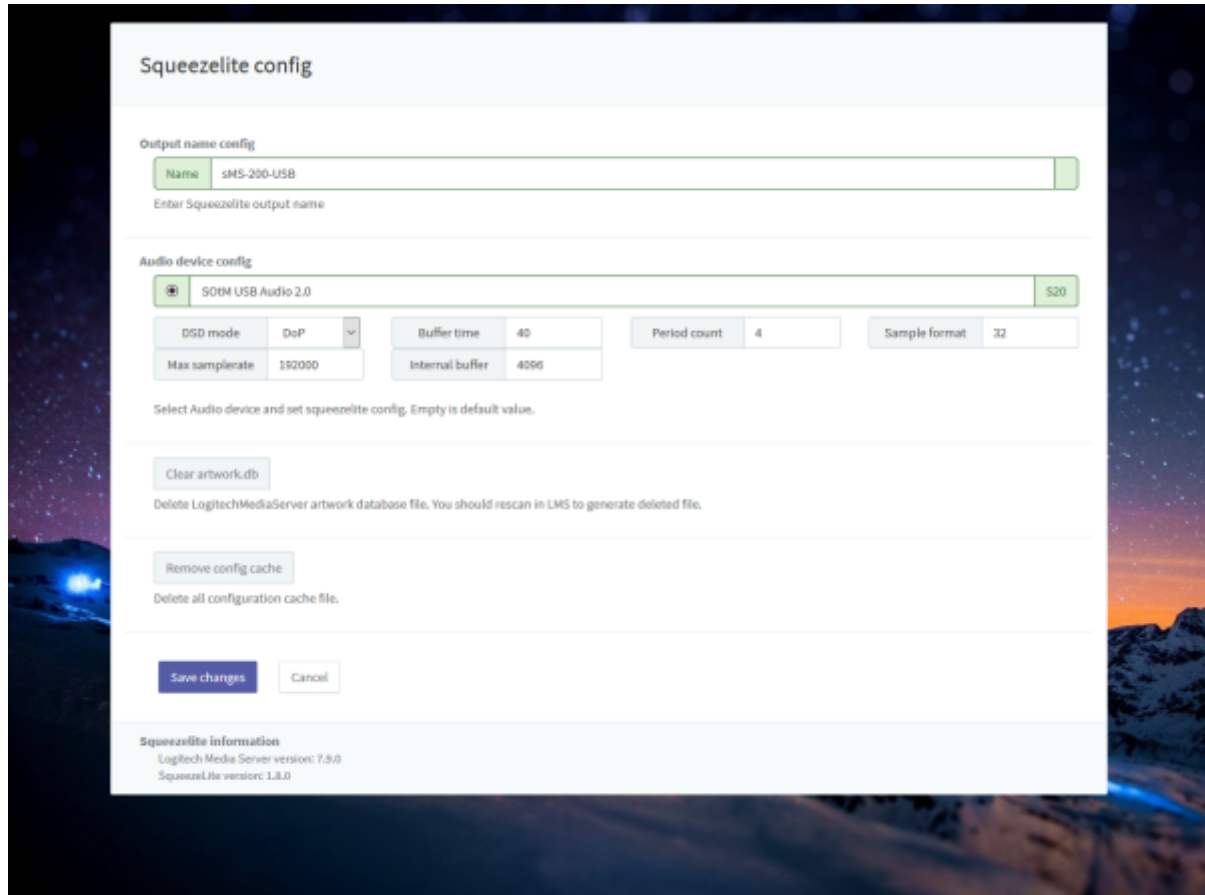


Squeezelite / Logitech Media Server

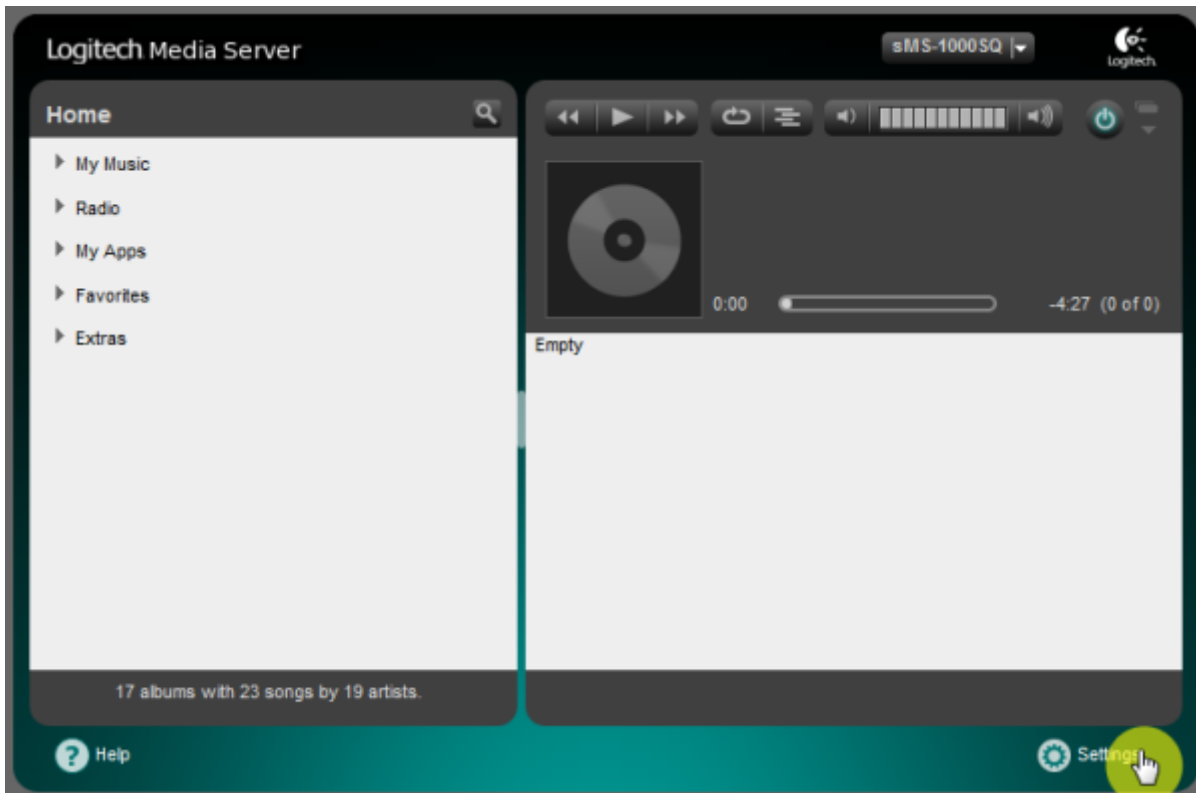
Squeezelite is a network music player which could be used with Logitech Media Server(aka. LMS). Eunhasu has LMS inside of itself which is available Tidal, Qobuz and internet radio.



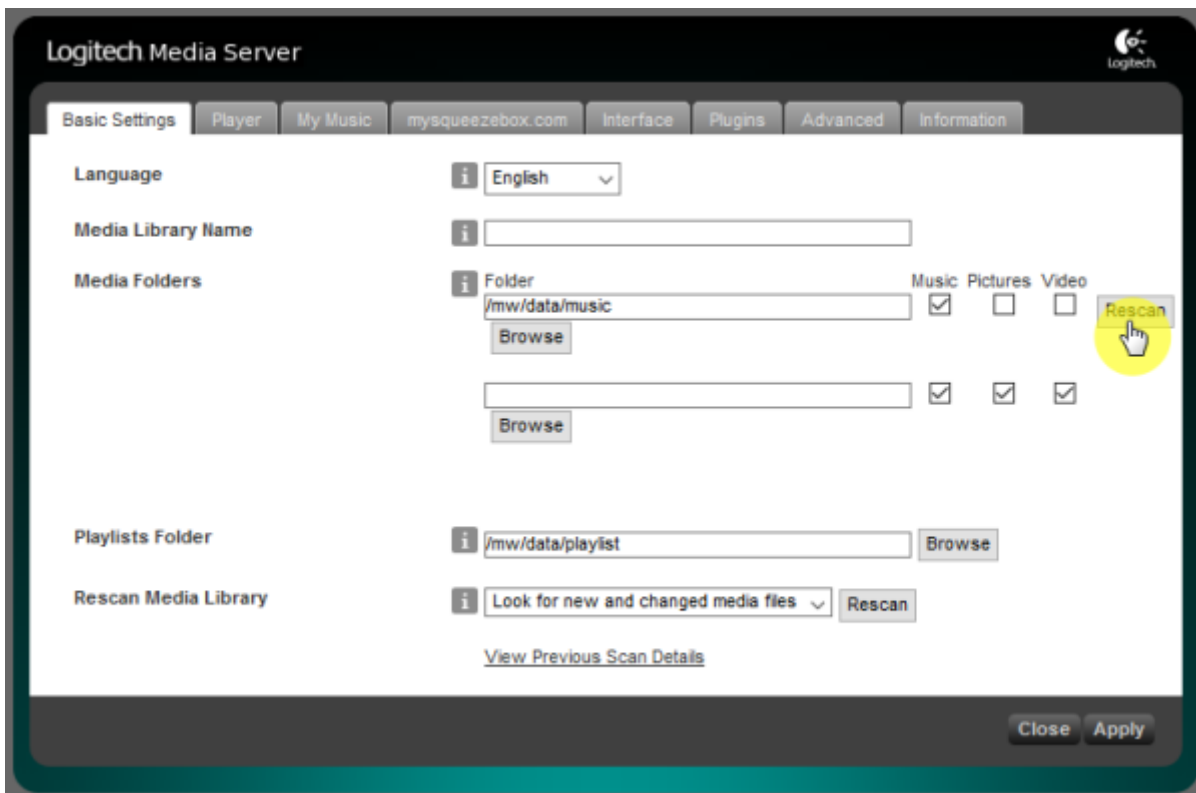
- **Name:** A name of device Squeezelite appearing on LMS. This could be changed if you need.
- **Audio device config:** Select a radio button of USB DAC which is going to use and click 'Save changes' to use the USB DAC.
- **DSD mode:** Set playback mode. Convert music to PCM or playing DSD music file by DoP or native. DAC should support native DSD when native mode.
- **Clear artwork.db:** Delete LMS artwork database file. You should rescan in LMS to generate deleted file.
- **Clear config cache:** Delete LMS config cache files.

LMS library rescan guide.

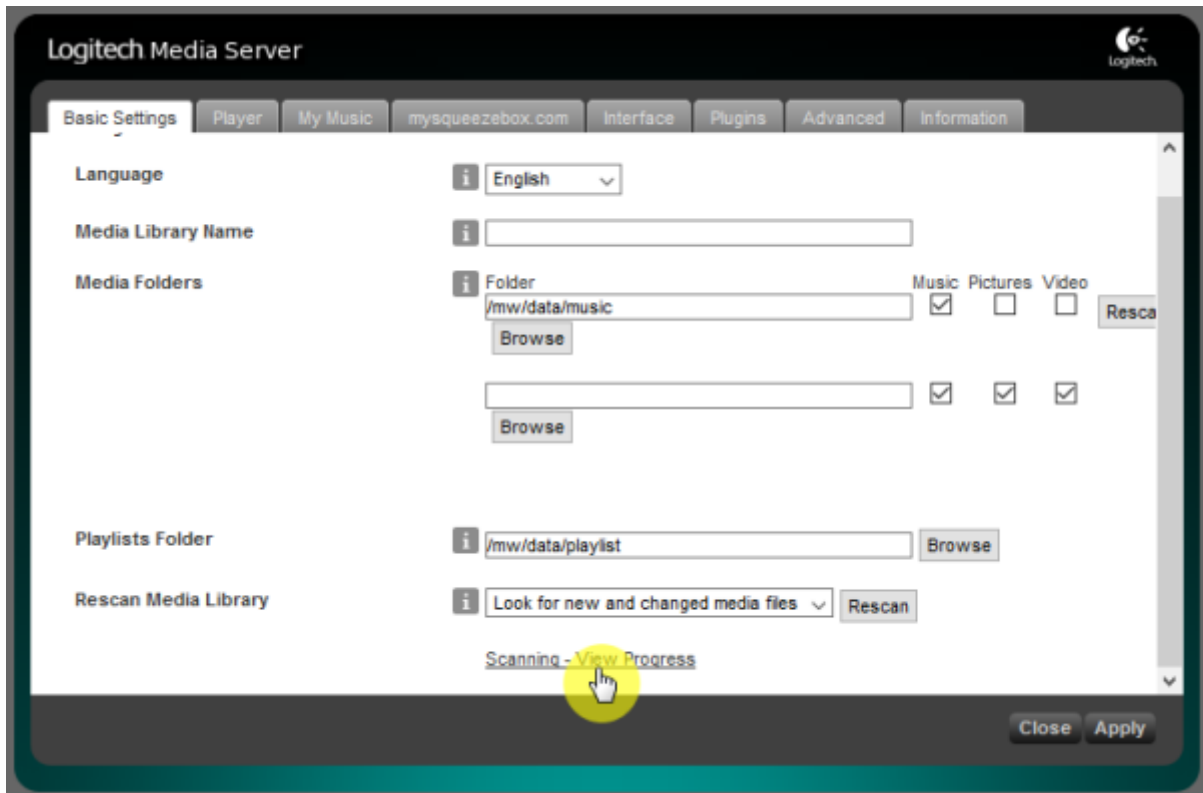
[Move on to Settings menu page.](#)



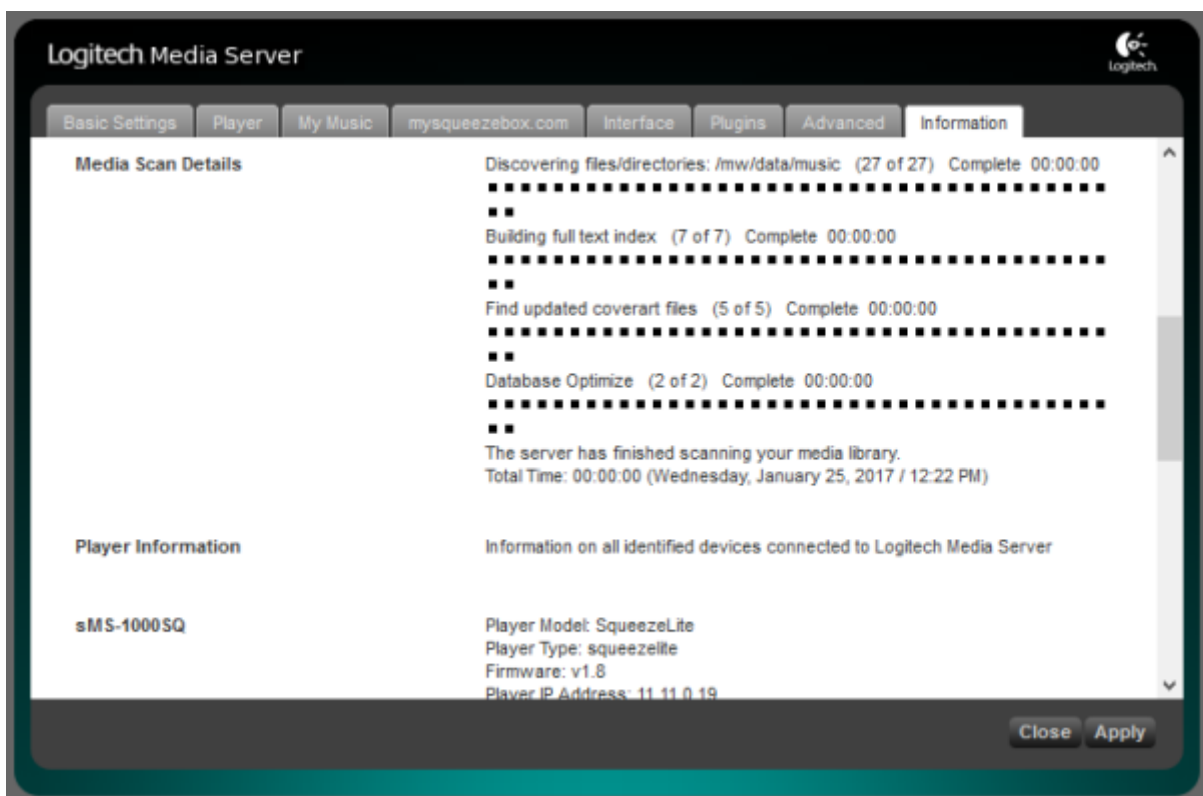
Click "Rescan" button to start scan on Basic Settings tab.



Click "Scanning - View Progress" link at bottom of page if you'd like to see scanning states.



Scanning states screen.



ickStream plugin provides lots of third-party feature like Quboz, TIDAL. Install guide are following.

- http://wiki.ickstream.com/index.php/Open_Beta_Squeezebox_Installation

After finish ickStream plugin installation, you have to agree EULA and login ickStream in LMS > Settings > Advanced > ickStream page.

Logitech Media Server

Basic Settings | Player | My Music | mysqueezebox.com | Interface | Plugins | **Advanced** | Information

ickStream ▾

Changes have been saved.

Sort albums for artist i by title ▾

Background daemon port i 9006

SSL peer verification i Enabled ▾

Proxied streaming for hires services i Enabled ▾

ickStream Music Platform Service i [Login to ickStream Music Platform](#) Refresh

If you have just logged in successfully, click "Refresh" button to

Terms of use i [Logitech Media Server](#) , [SqueezeLite](#)

Privacy Policy i [Privacy Policy](#)

Login complete.

Logitech Media Server

Basic Settings | Player | My Music | mysqueezebox.com | Interface | Plugins | **Advanced** | Information

ickStream ▾

Changes have been saved.

Sort albums for artist i by title ▾

Background daemon port i 9006

SSL peer verification i Enabled ▾

Proxied streaming for hires services i Enabled ▾

ickStream Music Platform Service i Logged in as: [sotm.dev@gmail.com](#) Refresh Logout

[Add or remove services from your ickStream Music Platform account](#)

Remotely controllable players i sMS-200-USB

Refresh

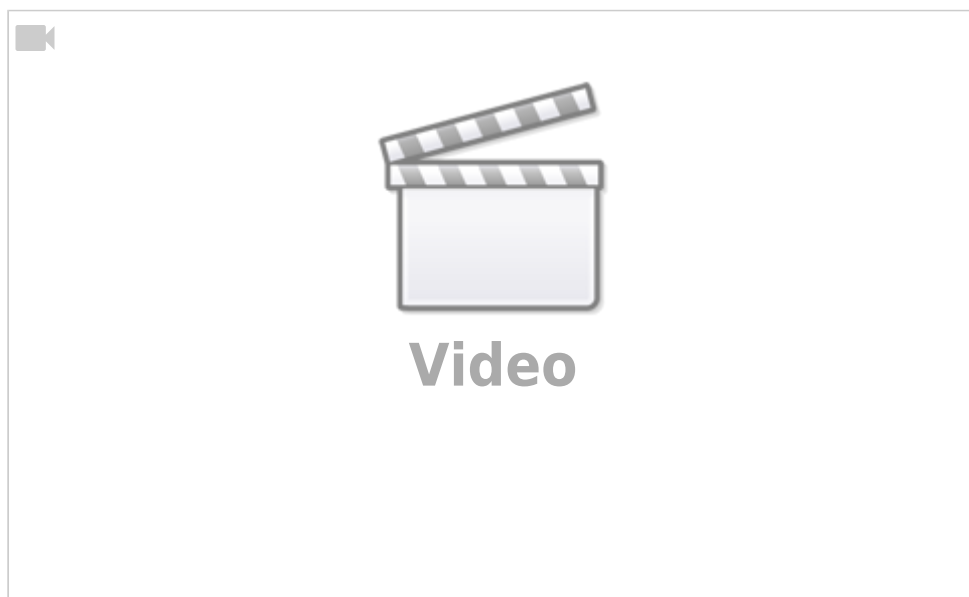
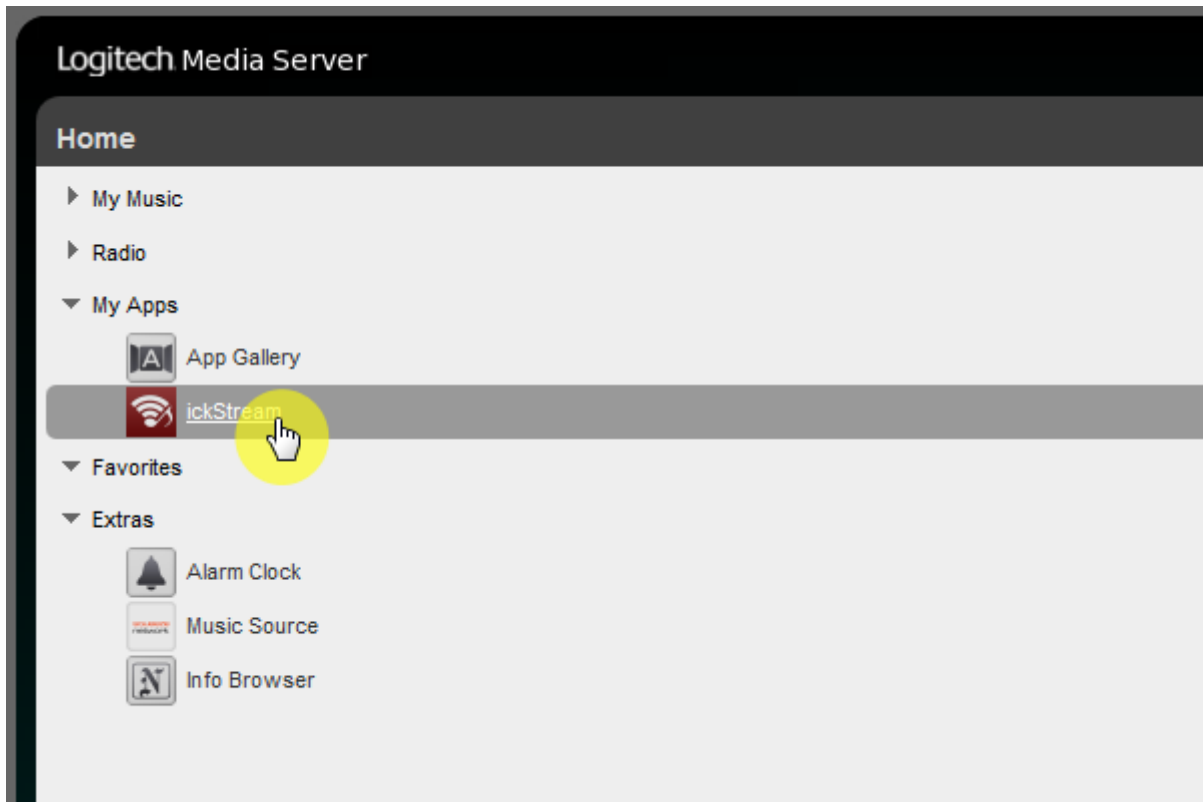
Registered players i None of the connected Squeezebox players are registered on ickStream

Refresh Re-register all players

Terms of use i [Logitech Media Server](#) , [SqueezeLite](#)

Privacy Policy i [Privacy Policy](#)

You can see ickStream item in My Apps of LMS main screen.



Video: how to install and set Spotify plugin in LMS; Spotify premium account required.

From:
<https://www.docs.sotm-audio.com/> - **SOTM docs**

Permanent link:
<https://www.docs.sotm-audio.com/doku.php?id=en:squeezeelite&rev=1499048853>

Last update: **2017/07/02 22:27**

