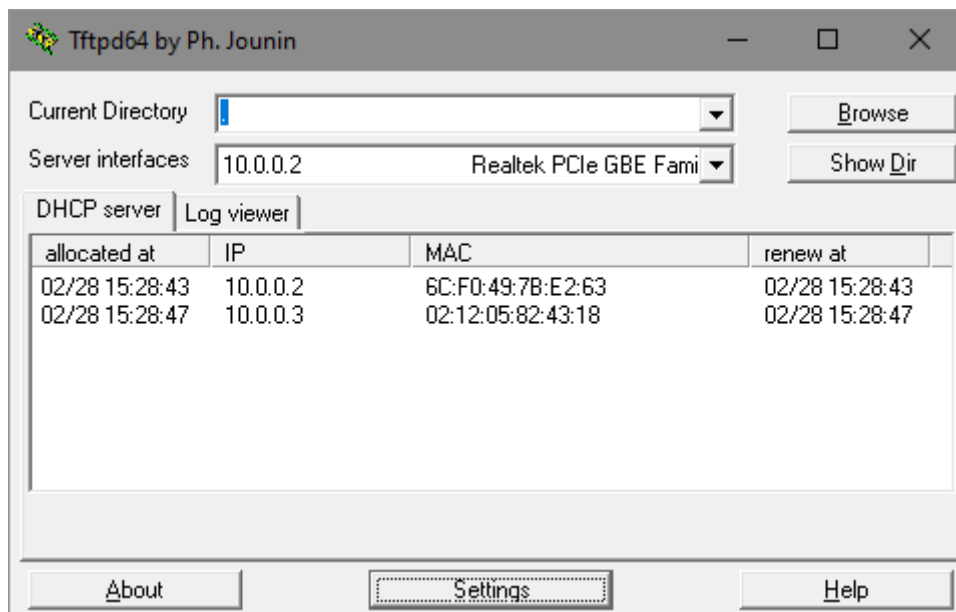


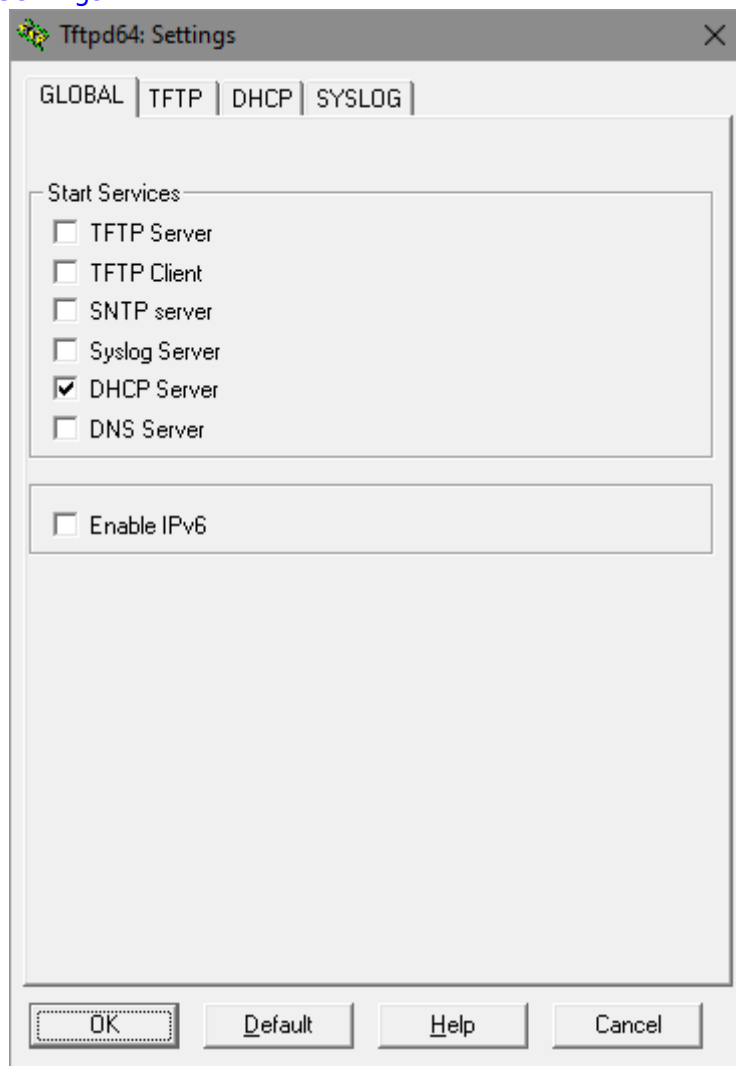
How to make direct connection between SMS device and Windows system.

Download [tftpd32](#) and install it. Prepare direct LAN cable.

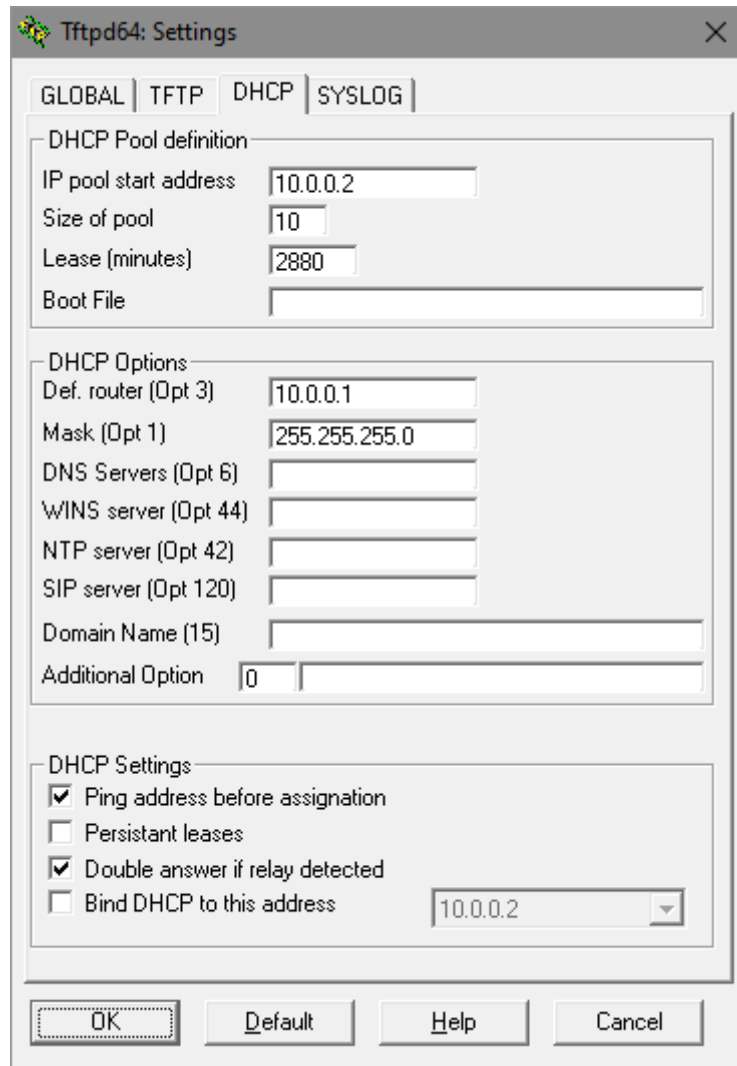
Example setting to enable DHCP server on you windows system:



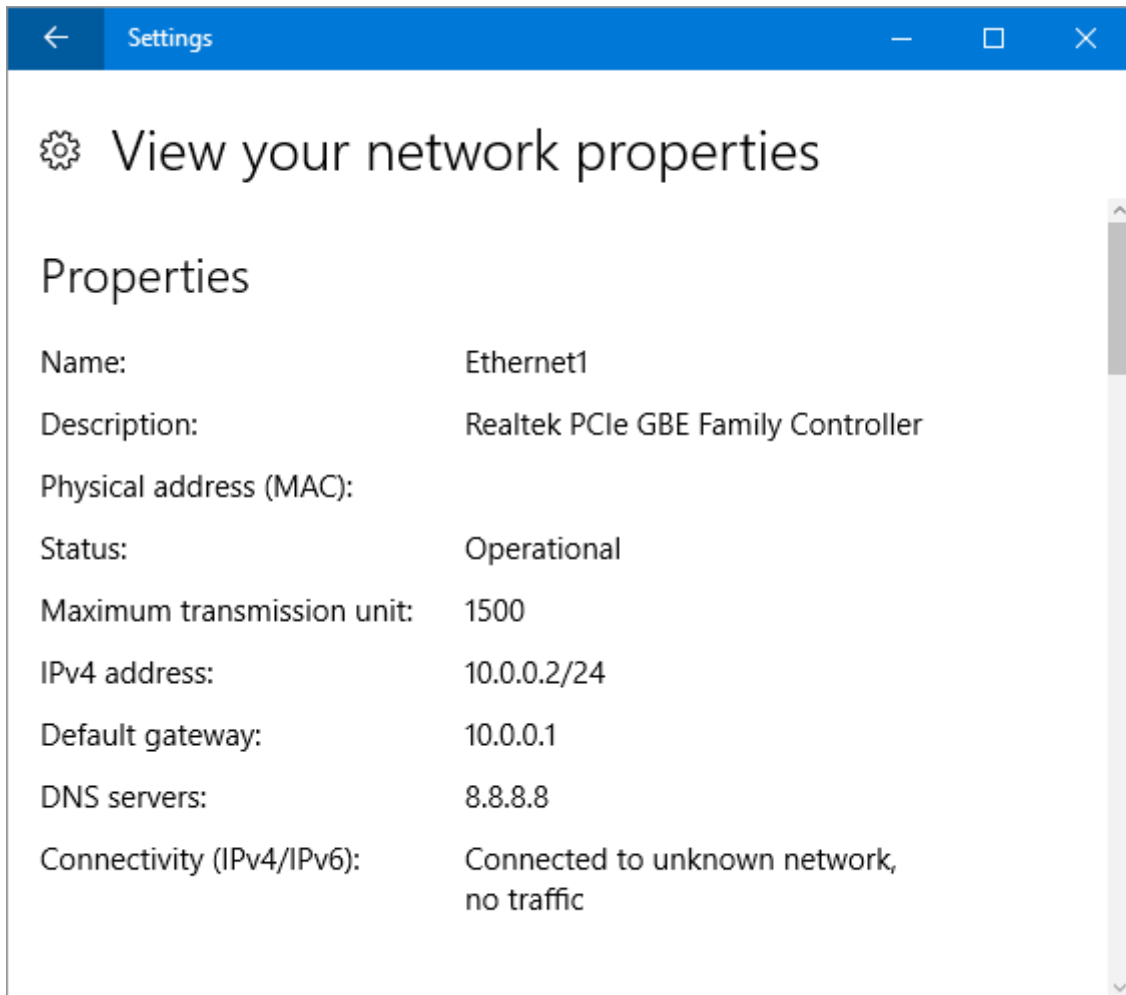
Click a button named 'Settings'



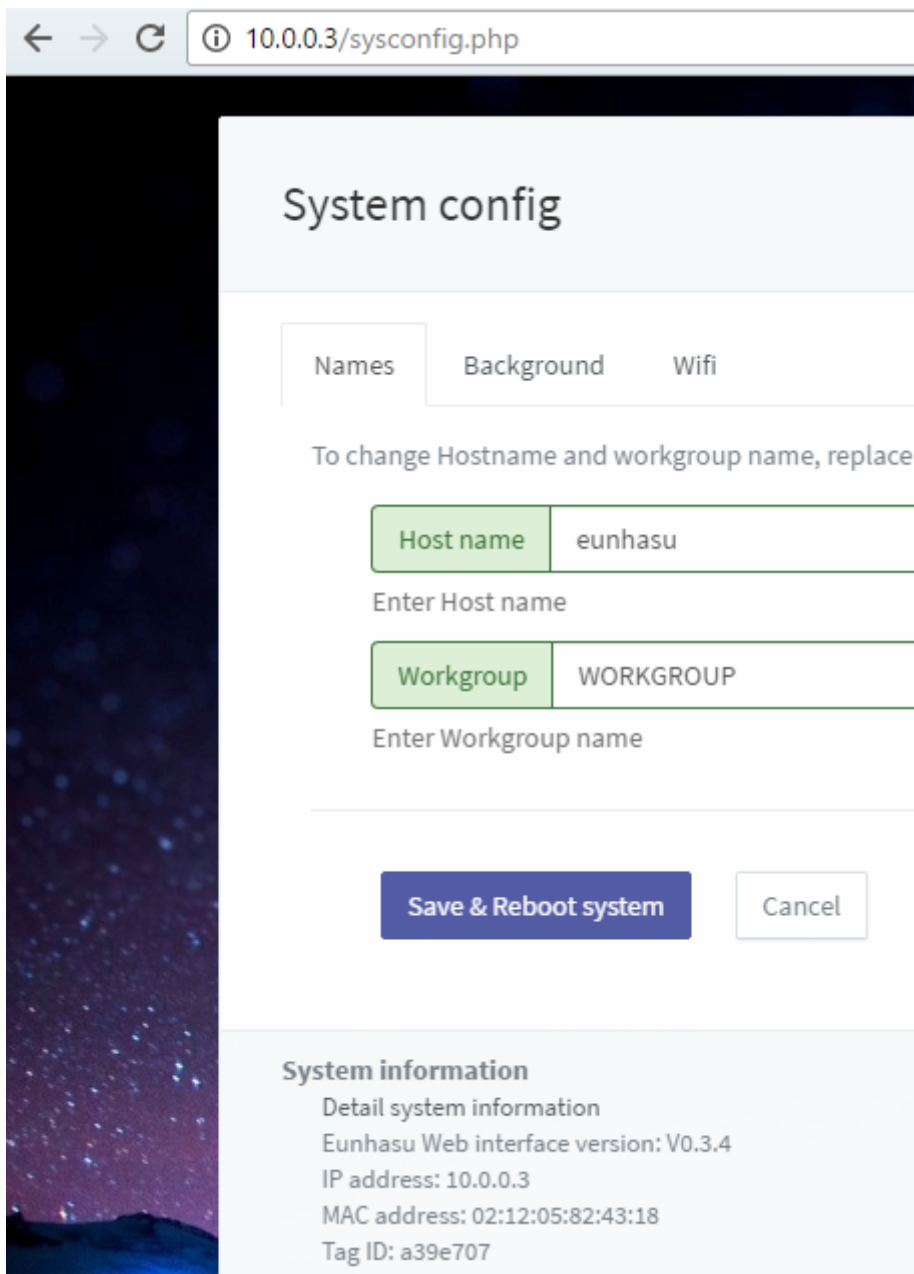
Select DHCP server



Set configurations like my example or what you want



Windows result



sms-200 result of dynamic IP allocation

From:
<https://docs.sotm-audio.com/> - **SOTM docs**

Permanent link:
https://docs.sotm-audio.com/doku.php?id=en:kb:dhcp_server_for_windows

Last update: **2017/03/10 02:18**

