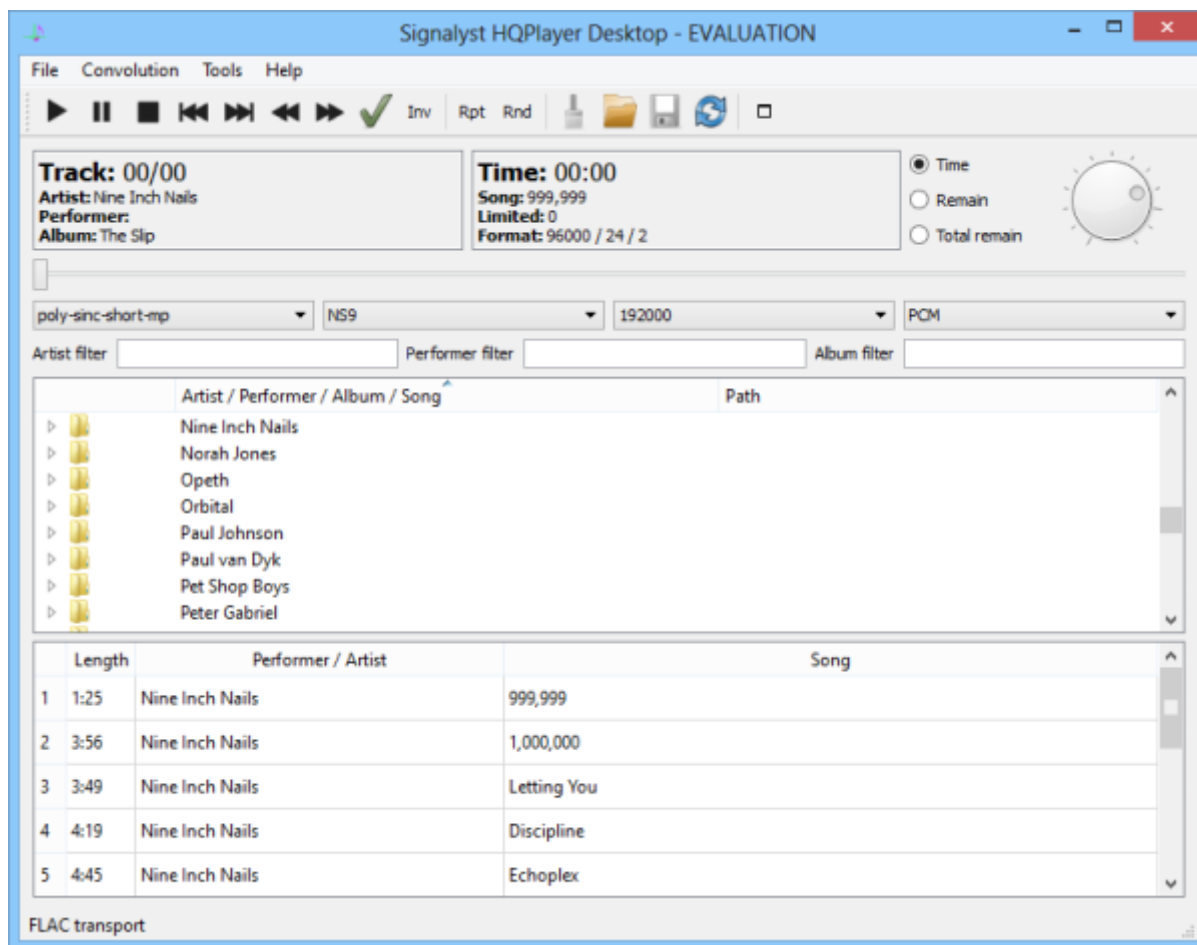
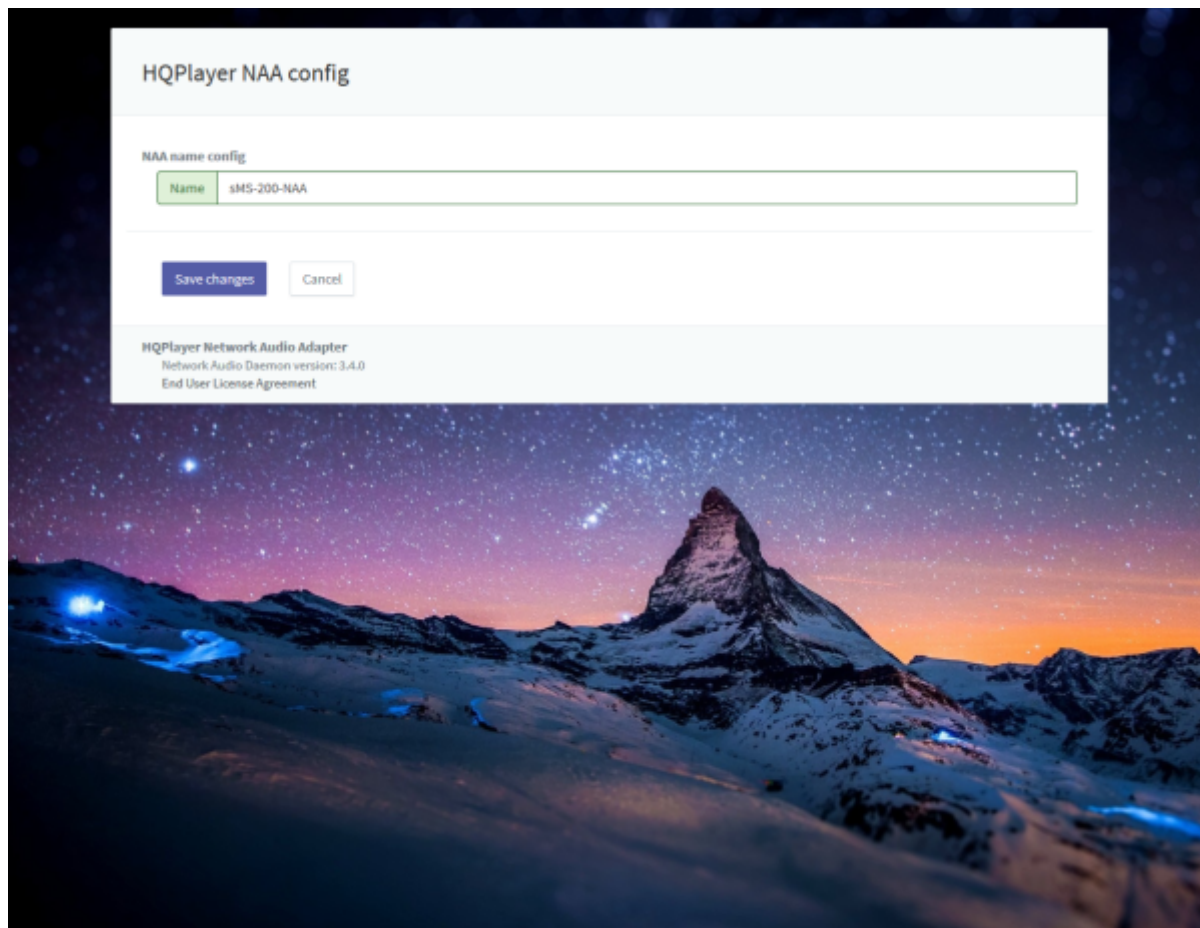


HQPlayer NAA



[HQPlayer Desktop](#) is a high performance media player to be able to upsample music file on Windows, mac and Linux OS. HQPlayer NAA is working like a bridge to connect HQplayer Desktop over network to plays music files [bridge](#) between HQPlayer Desktop and the device via local network. Especially, NAA is a superb for DSD playback.



You can change the device name.

Settings

CD drive
/dev/sr0

Device Settings

Backend
NetworkAudioAdapter

Device
sMS-200-NAA: SotM USB Audio 2.0: USB Aud

Channels
2

Ch. offset
0

SDM Pack
none

☐ 2wire

Buffer time
Default

DAC bits
Default

☐ AltDSD

PCM Defaults

Filter
poly-sinc

Dither
TPDF

Sample rate (/ Limit)
96000

SDM Defaults

Oversampling
poly-sinc-2s

Modulator
ASDM7

Bit rate (/ Limit)
2822400

Vol Min
-60.0dB

Vol Max
0.0dB

☐ Pipeline SDM

☐ CUDA offload

☐ Auto rate family

☐ Full screen mode

☐ Log file

CancelOK

This screen shot is from HQPlayer Desktop settings menu.



simple demo video

Last Updated: 2019/12/02 20:35

From:

<https://docs.sotm-audio.com/> - **SOtM docs**

Permanent link:

https://docs.sotm-audio.com/doku.php?id=en:hqplayer_naa



Last update: **2019/12/02 20:35**