

Requirement

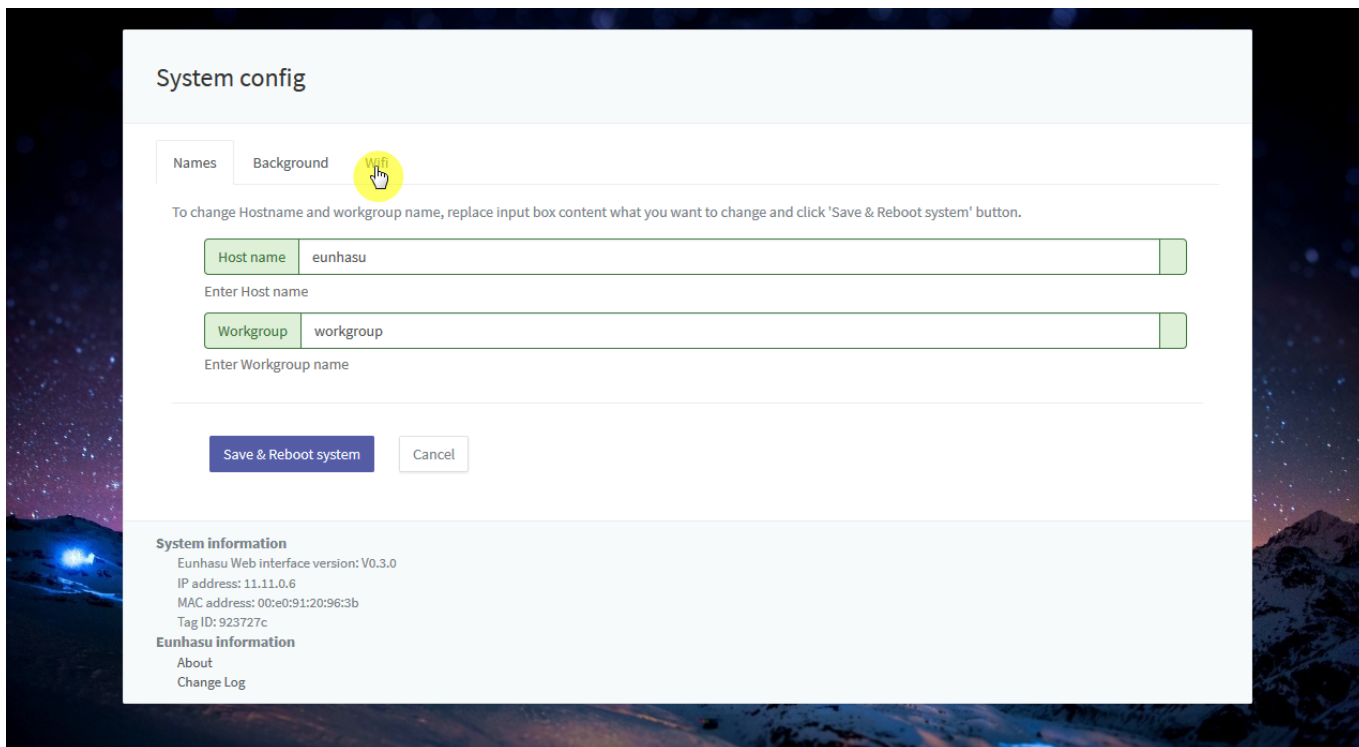
- SMS-200 V0.3.0 or SMS-1000SQ Eunhasu V0.3.0
- Wifi dongle
 - RTL8812AU chipset

Simple Instruction

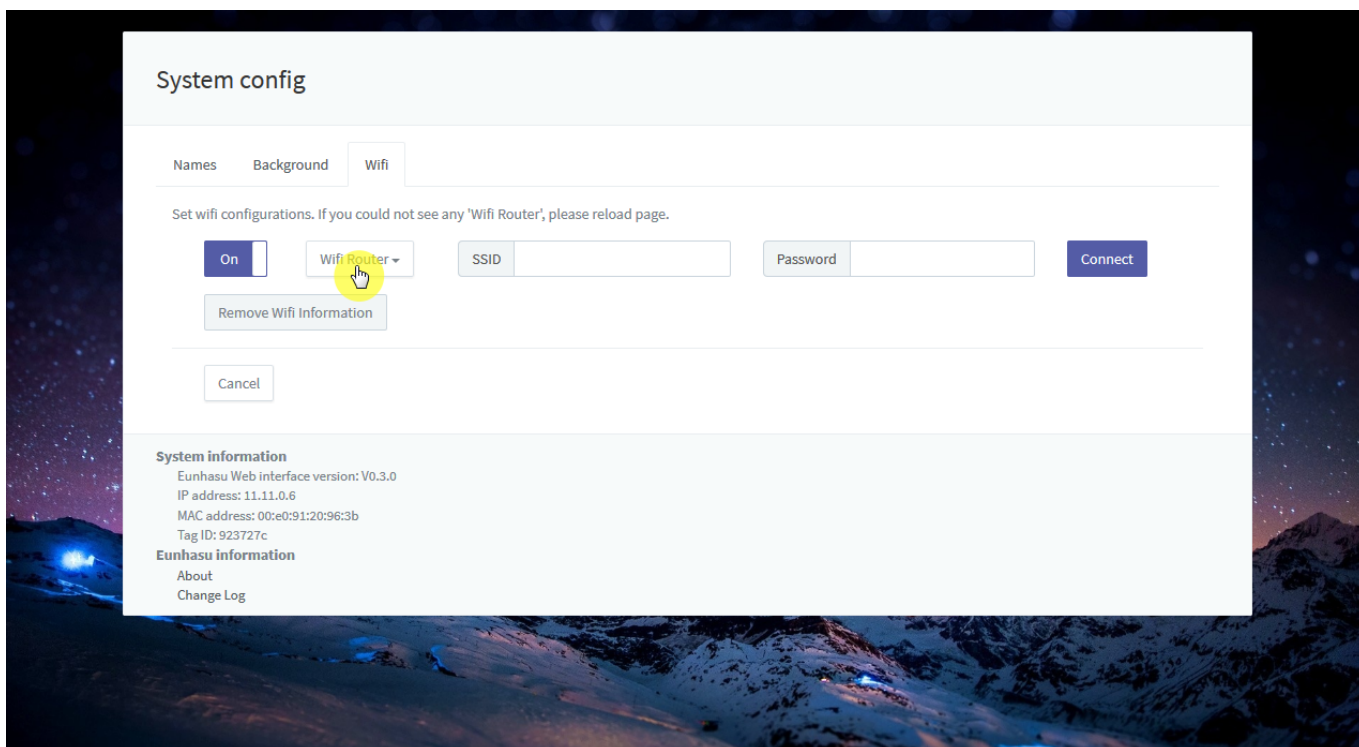
Connect Wifi USB dongle into USB port.



Click 'Wifi' tab in System config page.



Click 'Wifi Router' button to show Wireless Access Point.



Select AP what you want.



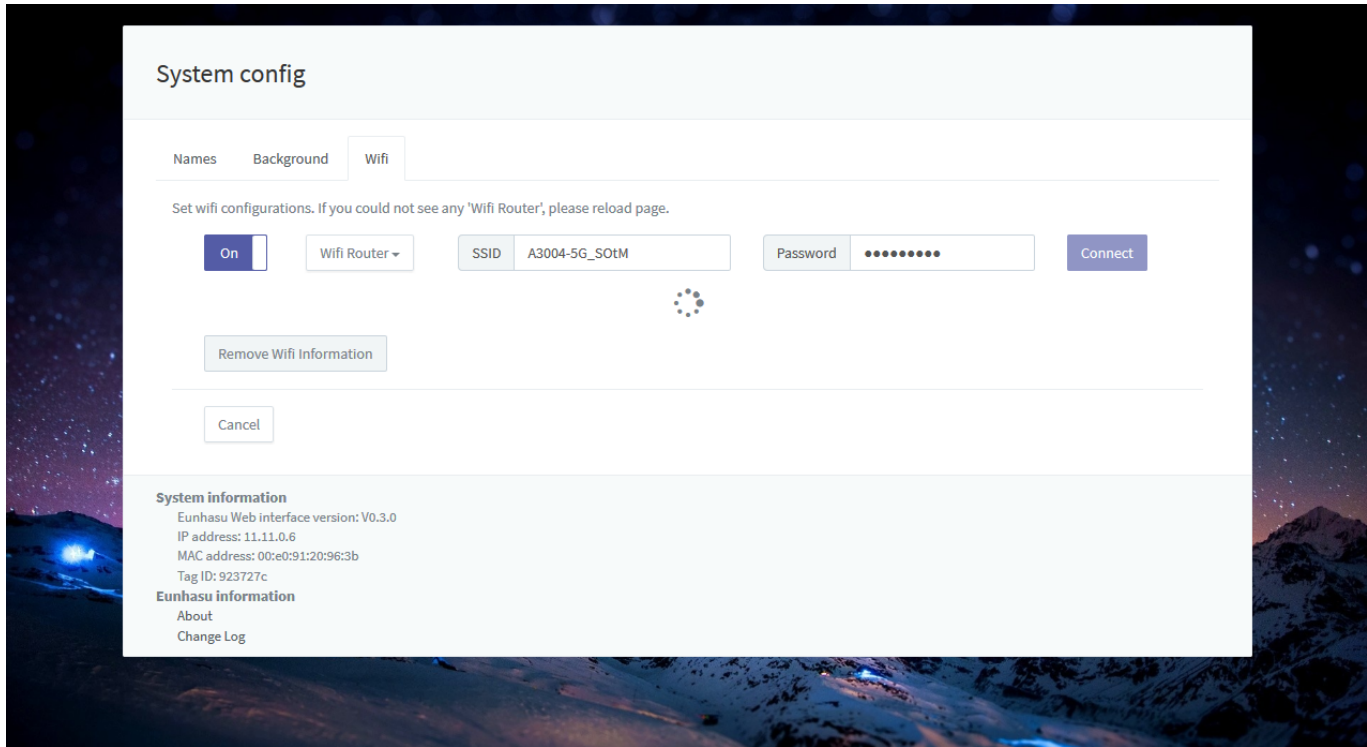
Enter password or secret if it required.



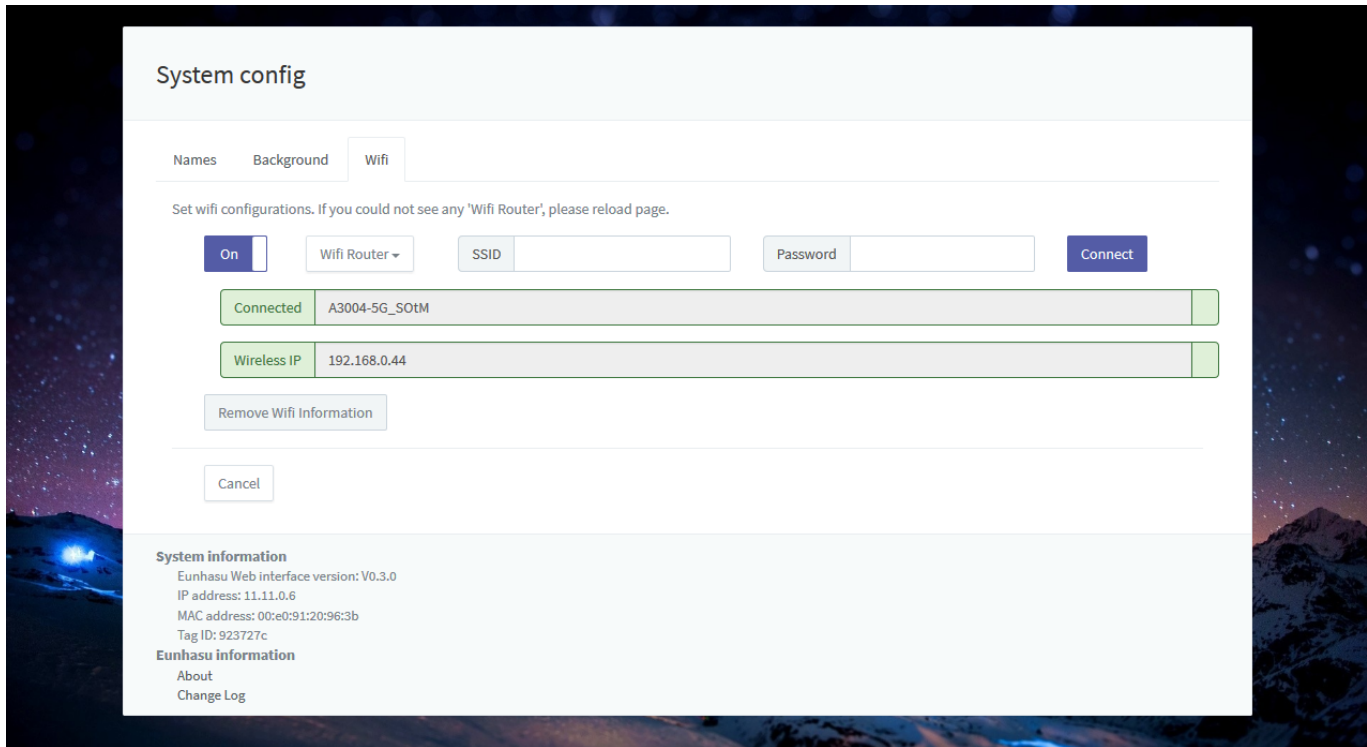
Waiting for seconds.

Last update: 2017/01/19 22:01

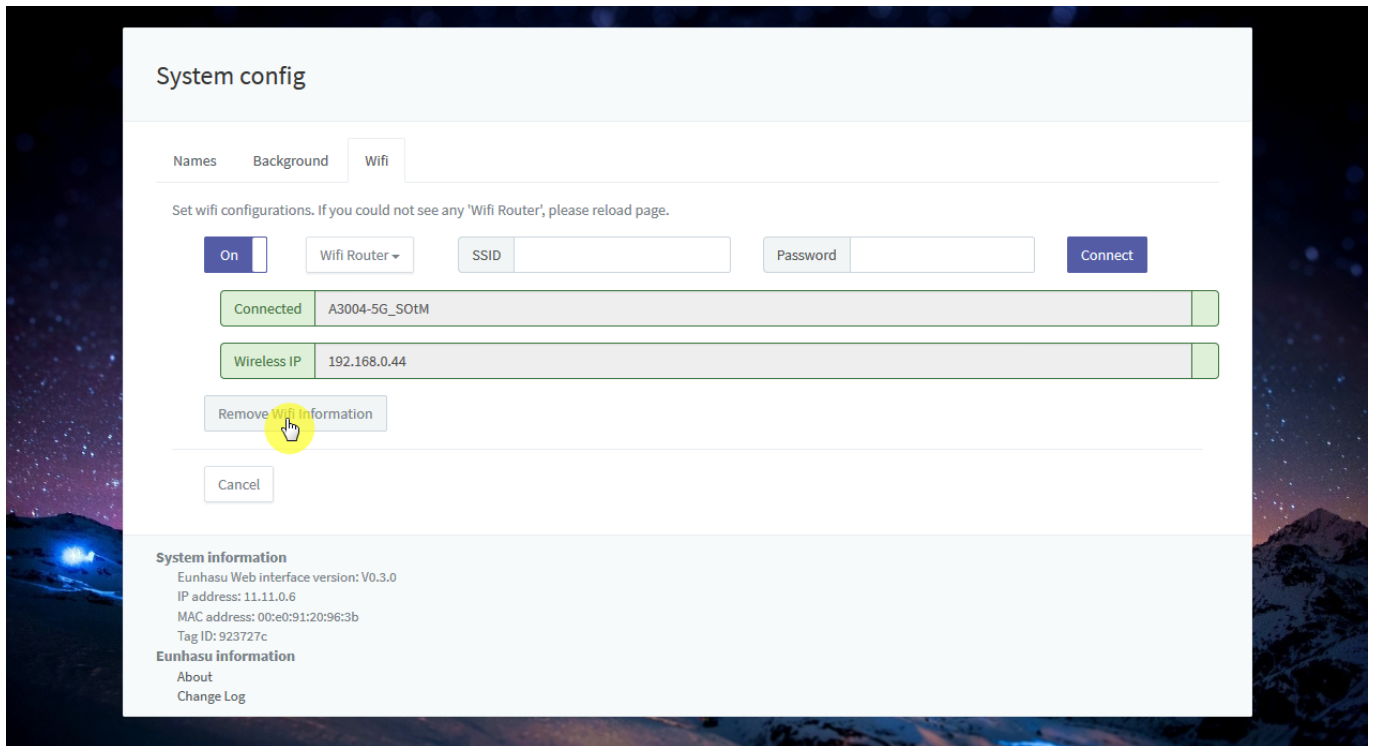
en:how_to_use_wifi_in_eunhasu https://www.docs.sotm-audio.com/doku.php?id=en:how_to_use_wifi_in_eunhasu&rev=1484881280



After connect successfully, you can see IP address like screen shot.



'Remove Wifi Information' button will remove all stored information include name and password.



- Eunhasu version \geq V0.3.0 required.
- There might be connection error if you use wired and wireless network at same the time.
- Network speed depends on wireless network status.

Last Updated: 2017/01/19 22:01

From:
<https://www.docs.sotm-audio.com/> - **SOTM docs**

Permanent link:
https://www.docs.sotm-audio.com/doku.php?id=en:how_to_use_wifi_in_eunhasu&rev=1484881280

Last update: **2017/01/19 22:01**

