

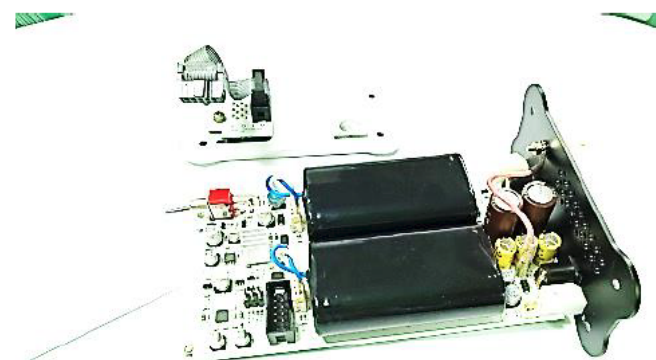
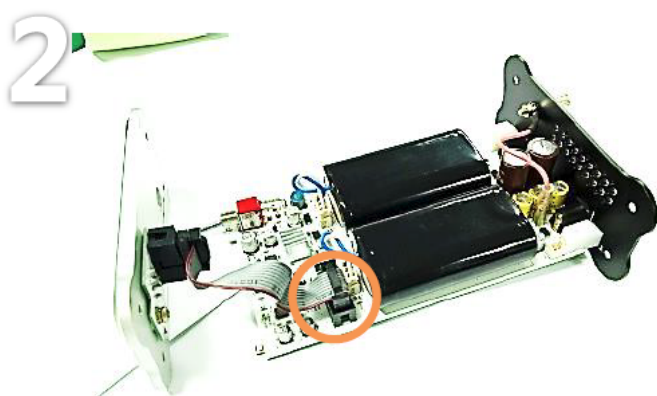
mBPS-d2s Battery Replacement Manual

CAUTION

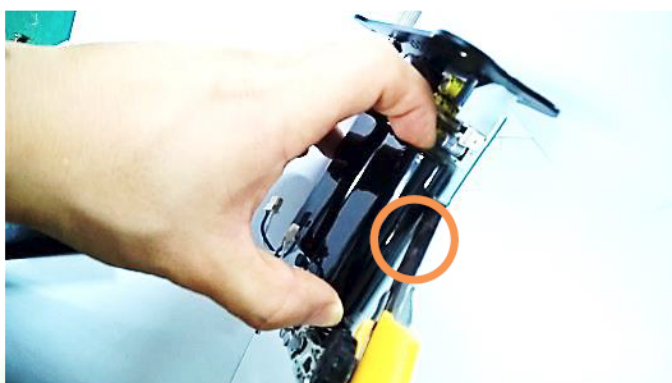
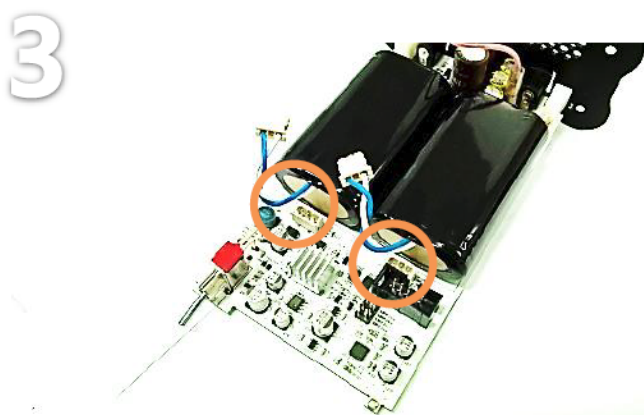
- If circumstances allow, ask replacement to distributor or retail shop.
- Be careful not to overtighten screws.
- Please recycle your used batteries that have explosion risk



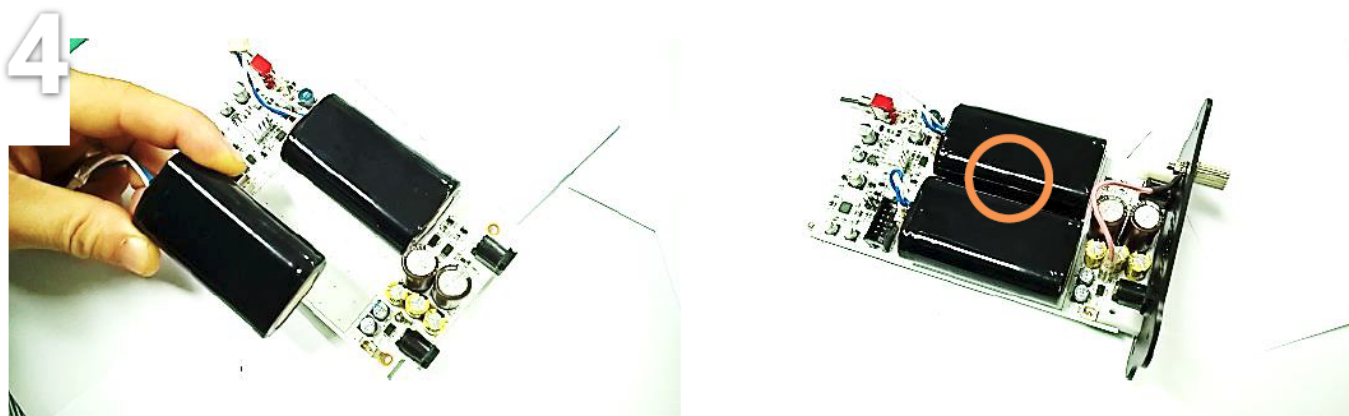
Remove eight Torx screws carefully



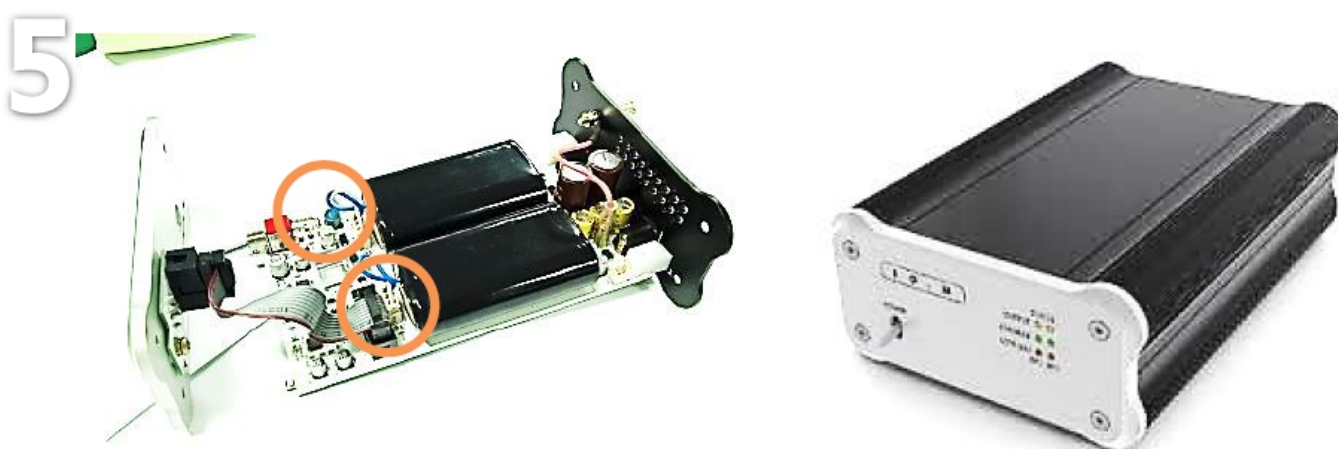
Remove the LED ribbon cable by pulling down



1. Remove the two connectors which are placed in front of the batteries by pulling down
2. Pry the battery packs off the back plate carefully by using tools such as straight razor
3. Remove residual tape on the back-plate



Remove backing on the two way tape from the new battery; center carefully on the board and make a little space between two batteries



Plug the battery terminals in, and then screw every plates to complete replacement

From:
<https://www.docs.sotm-audio.com/> - **SotM docs**

Permanent link:
https://www.docs.sotm-audio.com/doku.php?id=en:how_to_replace_the_mbps-d2s_battery_pack

Last update: **2016/11/16 22:24**