

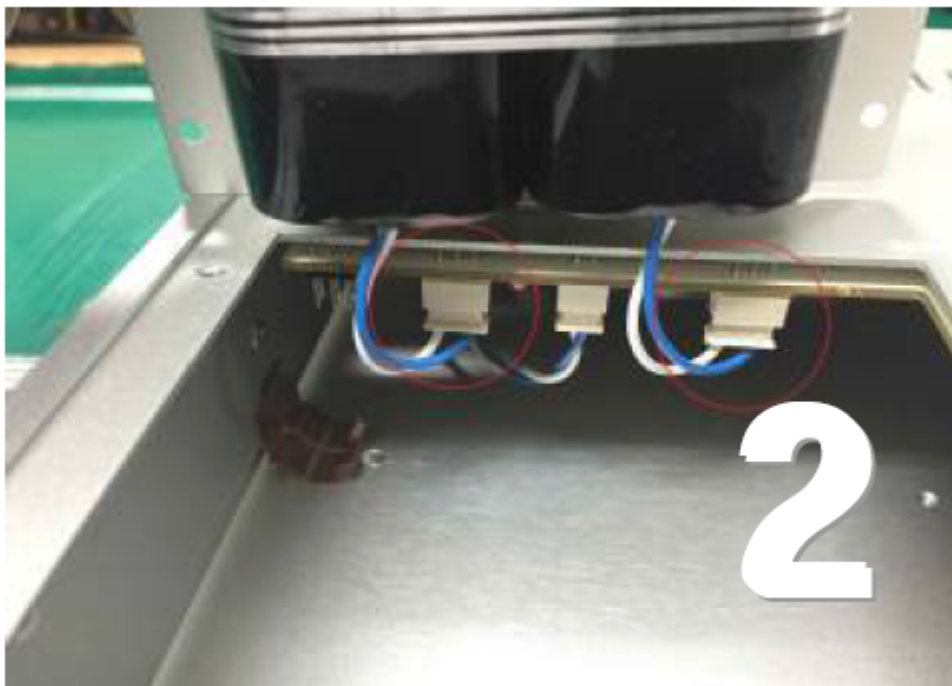
sDP-1000, sDP-1000EX Battery Replacement Instruction

CAUTION

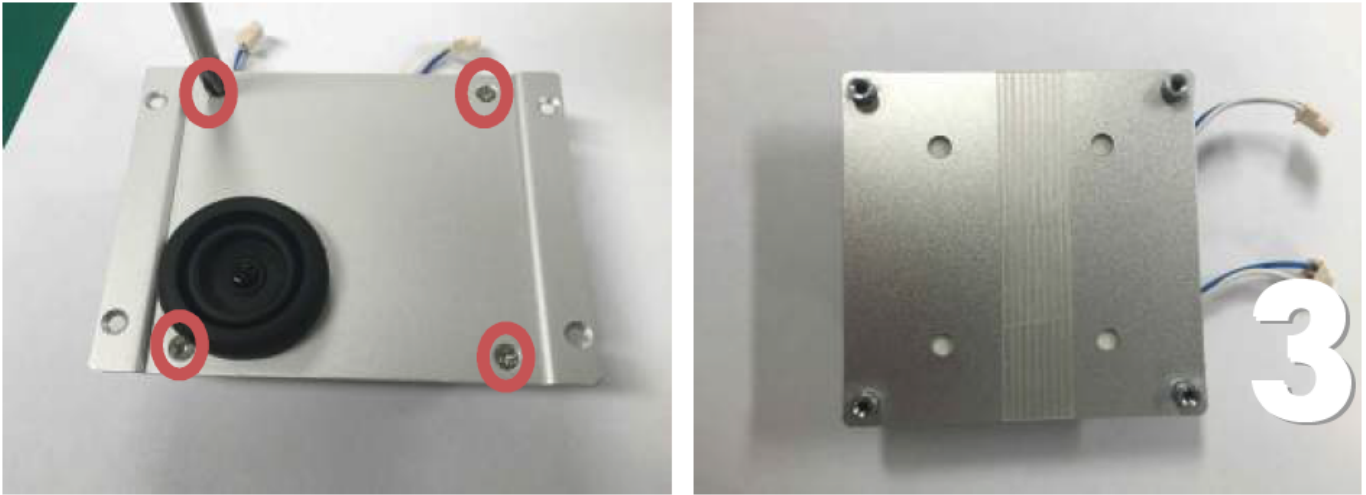
- If the circumstances allow, ask the dealer for the replacement.
- Be careful not to overtighten the screws.
- Please recycle the used batteries that have explosion risk.



Remove the outer four Phillips screws carefully



Remove the outer two connectors by pulling down. Leave the center connector alone.



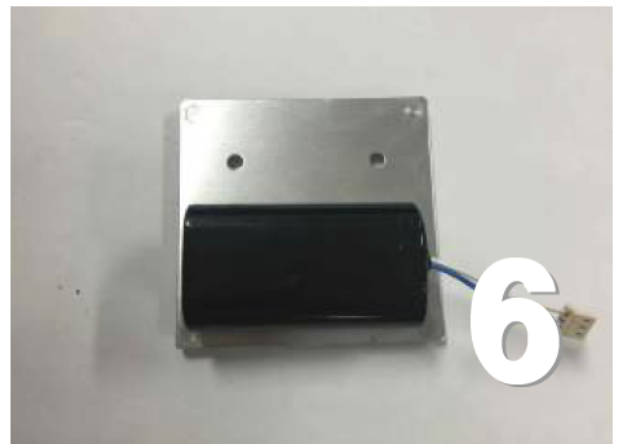
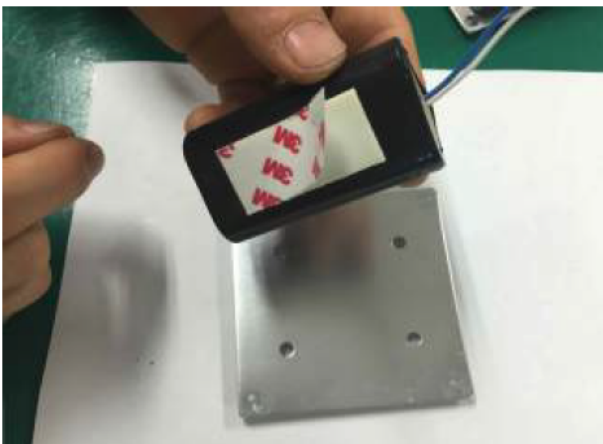
1. Unscrew the four remaining screws on the battery holder plate.
2. Unwrap the nylon reinforced tape from the batteries and the back-plate.



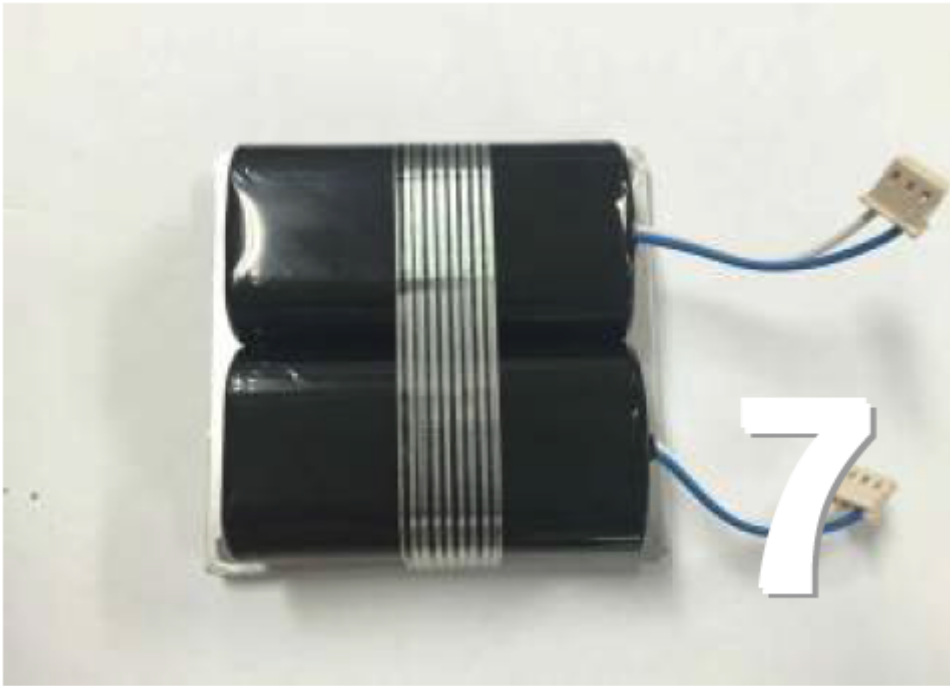
Carefully pry the battery packs off the back plate by using a tool such as straight razor.



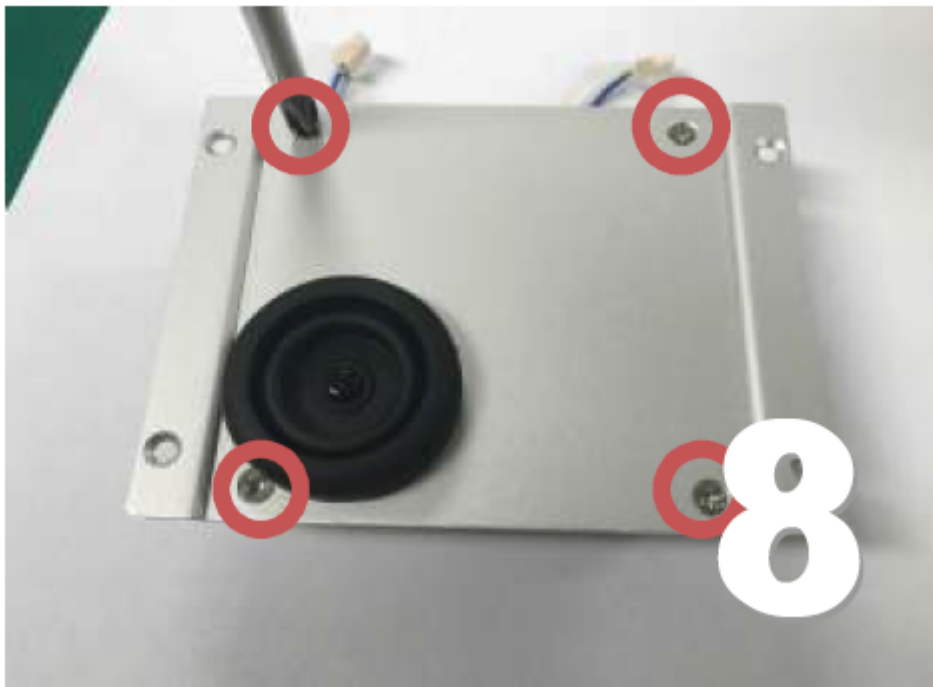
Remove residual tapes on the back-plate.



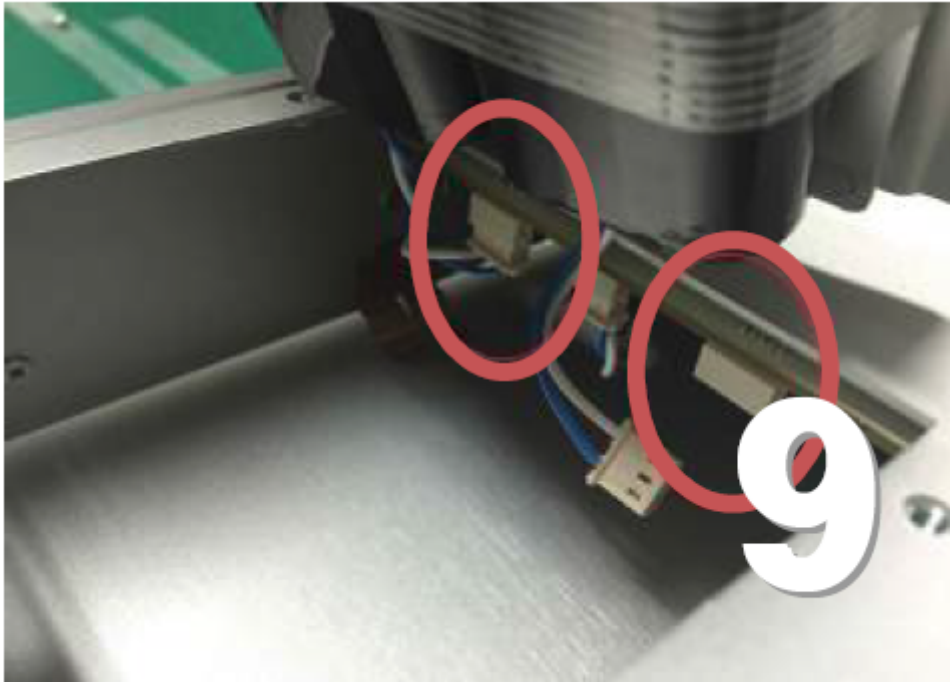
Remove peels of the tape from the new battery pack. And center it carefully on the two holes and make little space between two batteries.



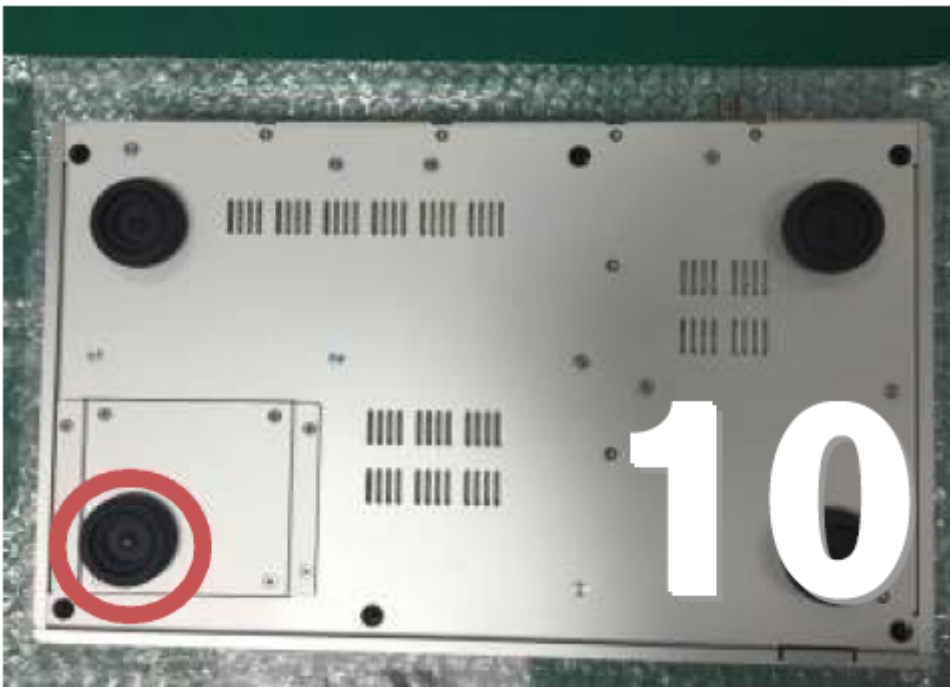
Wrap batteries and back-plate with the provided nylon reinforced tape.



Screw the back-plate with batteries to the battery holder plate.



Hold the new battery pack at the angle like the image above, and plug the outer (battery) terminals in.



Screw the battery holder plate (outer four) screws in place, and make sure the foot is positioned in the lower and outside corner.

From: <https://www.docs.sotm-audio.com/> - **SOTM docs**

Permanent link: https://www.docs.sotm-audio.com/doku.php?id=en:how_to_replace_sdp-1000_battery_pack&rev=1550459797

Last update: **2019/02/17 22:16**

