

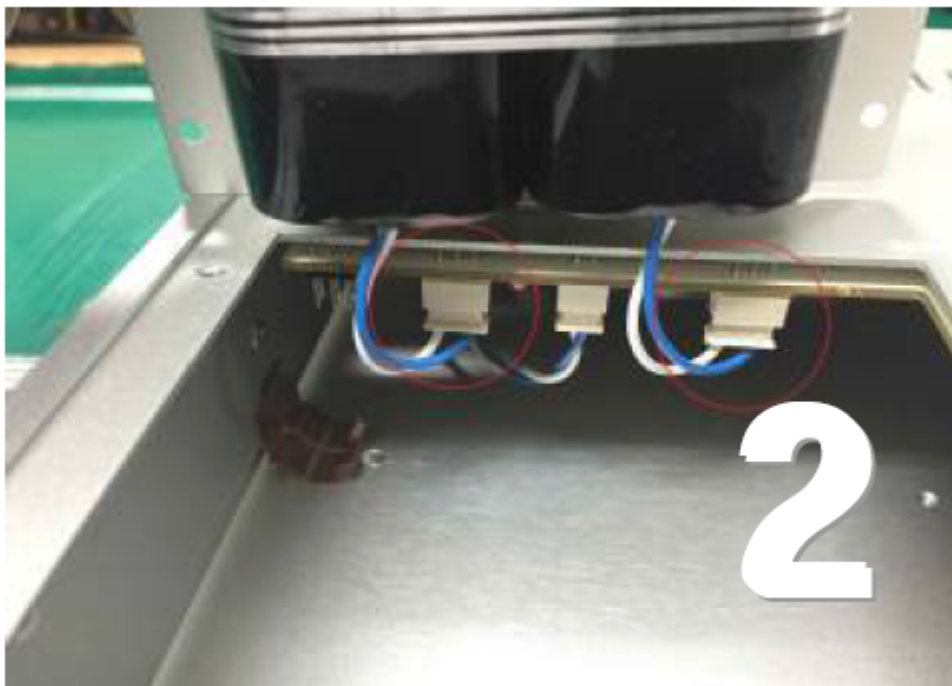
SDP-1000, sDP-1000EX Battery Replacement Instruction

CAUTION

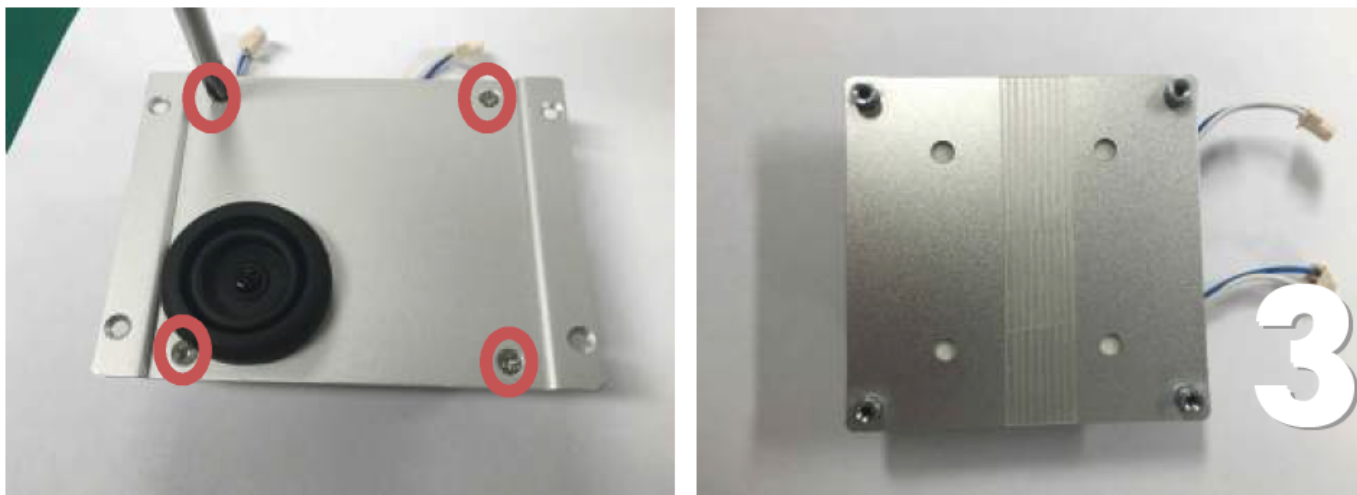
- If circumstances allow, ask your dealer for a replacement.
- Be careful not to overtighten the screws.
- Please recycle the used batteries as they have an explosion risk.



Remove the outer four Phillips screws carefully



Remove the outer two connectors by pulling down. Leave the center connector alone.



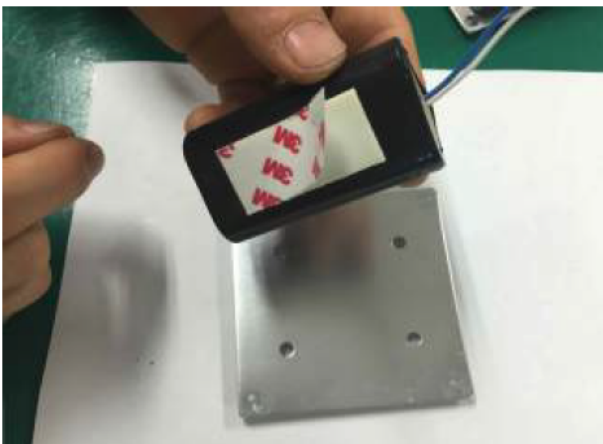
1. Unscrew the four remaining screws on the battery holder plate.
2. Unwrap the nylon reinforced tape from the batteries and the back-plate.



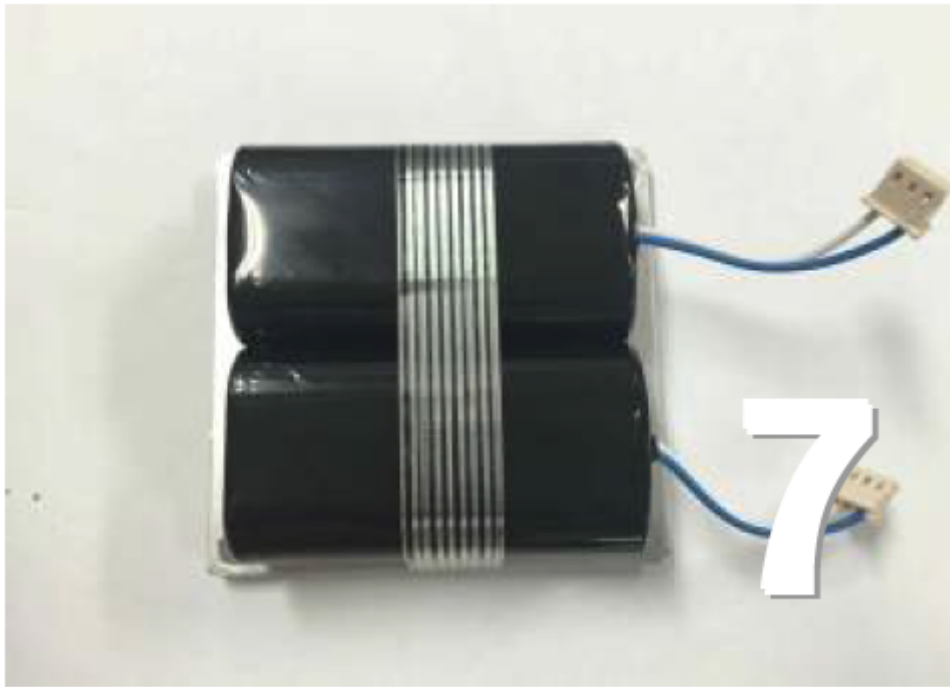
Carefully pry the battery packs off the back plate using a tool such as a straight razor.



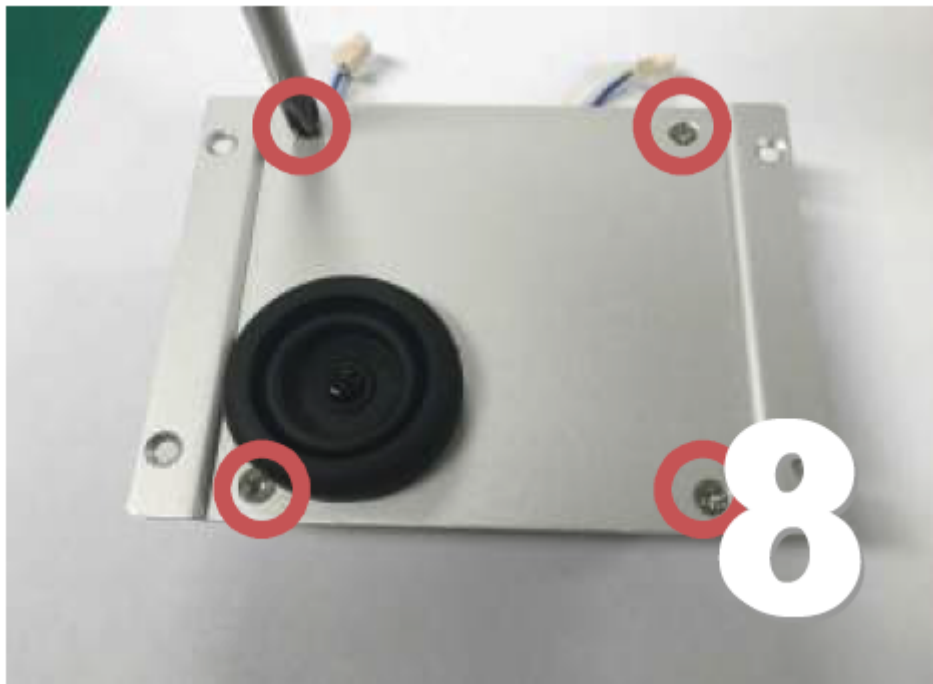
Remove residual tape on the back-plate.



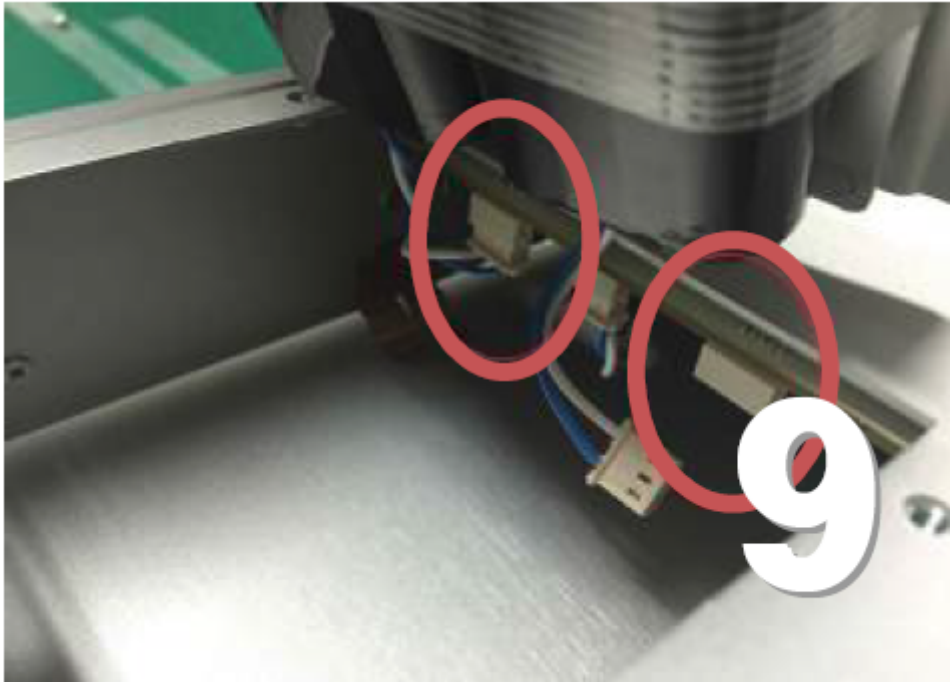
Remove peels of tape from the new battery pack. Center it carefully on the two holes, making a little space between the two batteries.



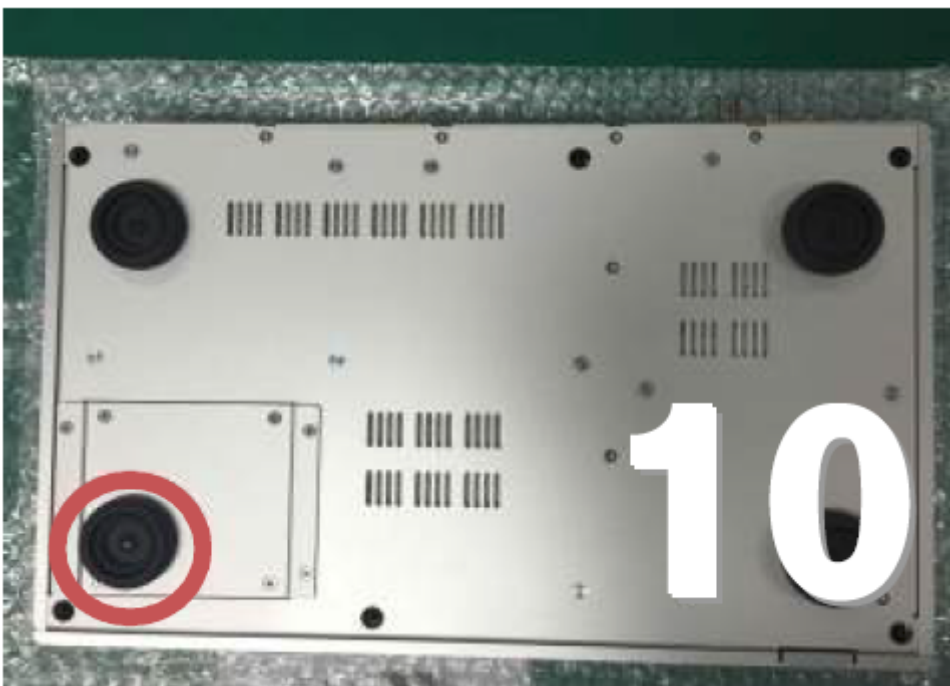
Wrap batteries and back-plate with the provided nylon reinforced tape.



Screw the back-plate with batteries to the battery holder plate.



Hold the new battery pack at the angle like the image above, and plug the outer (battery) terminals in.



Screw the battery holder plate (outer four) screws in place, and make sure the foot is positioned in the lower and outside corner.

From:
<https://www.docs.sotm-audio.com/> - **SOTM docs**

Permanent link:
https://www.docs.sotm-audio.com/doku.php?id=en:how_to_replace_sdp-1000_battery_pack

Last update: **2020/01/10 13:51**

