

Burning mSD card image

How to load Eunhasu image to the micro SD card.

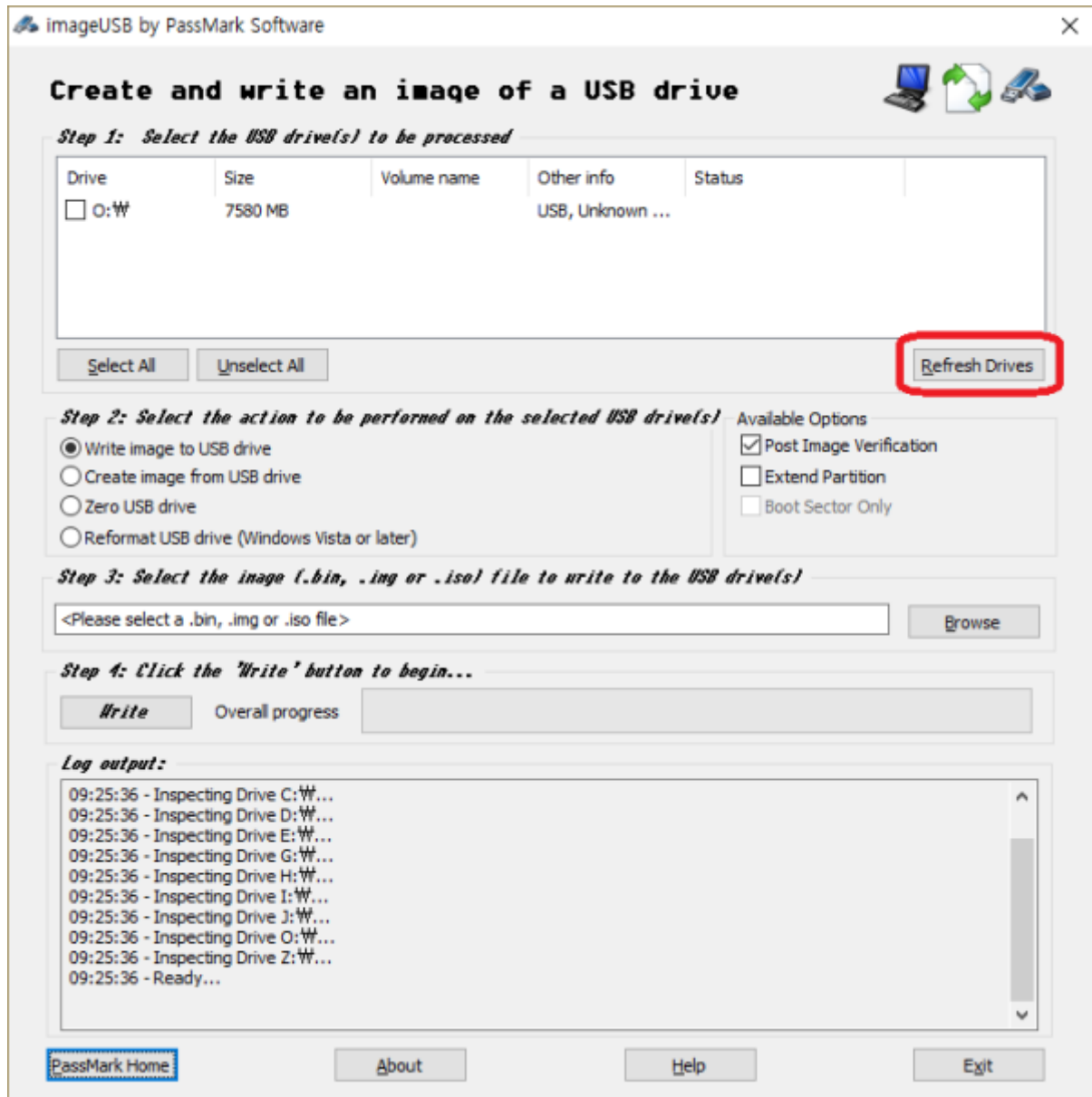
Windows OS

Preparation

- Download the latest Eunhasu image file and unzip it. Please note the image file is quite big. To download the Eunhasu image file, please send the serial number of your unit to the email address below: info@sotm-audio.com
- Download the [imageUSB](#) utility and unzip it, or try using [Balena Etcher](#) as it may work more reliably depending on your system.
- Press gently on the micro SD card in the micro SD card slot on the rear panel of SMS-200 to take it out, and insert it into a micro SD card reader. The micro SD card slot is "push-push type", so after loading the image file to the micro SD card, you can insert the micro SD card back into the slot. Once it's inserted properly, you will hear a click sound.
- If the file name ends with .gz or .zip, you need to extract it using a separate utility.
- If you are not able to complete the process successfully after following these steps, please check the following video: https://youtu.be/ty_HN2ggjtQ. Some unzip utilities may not extract the files completely, and in some cases, the extraction process may need to be performed twice. The video was created by one of our valued customers. Thanks to HC for sharing it.

Run imageUSB

[Run imageUSB](#). The connected USB device will be shown up. If the connected USB device is not shown, click 'Refresh Drives'.



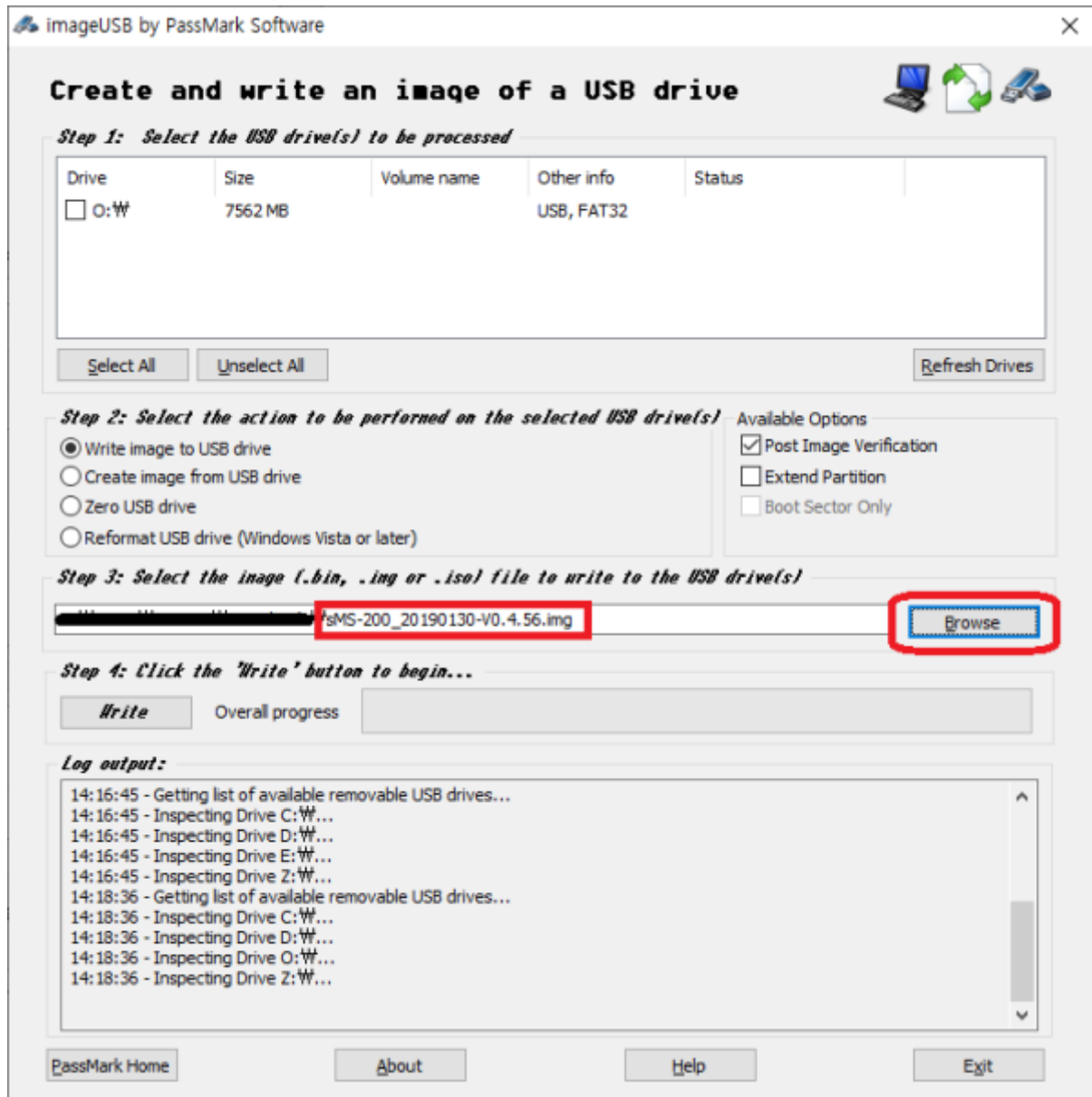
Select a USB device

Select a USB device to write the new image file.



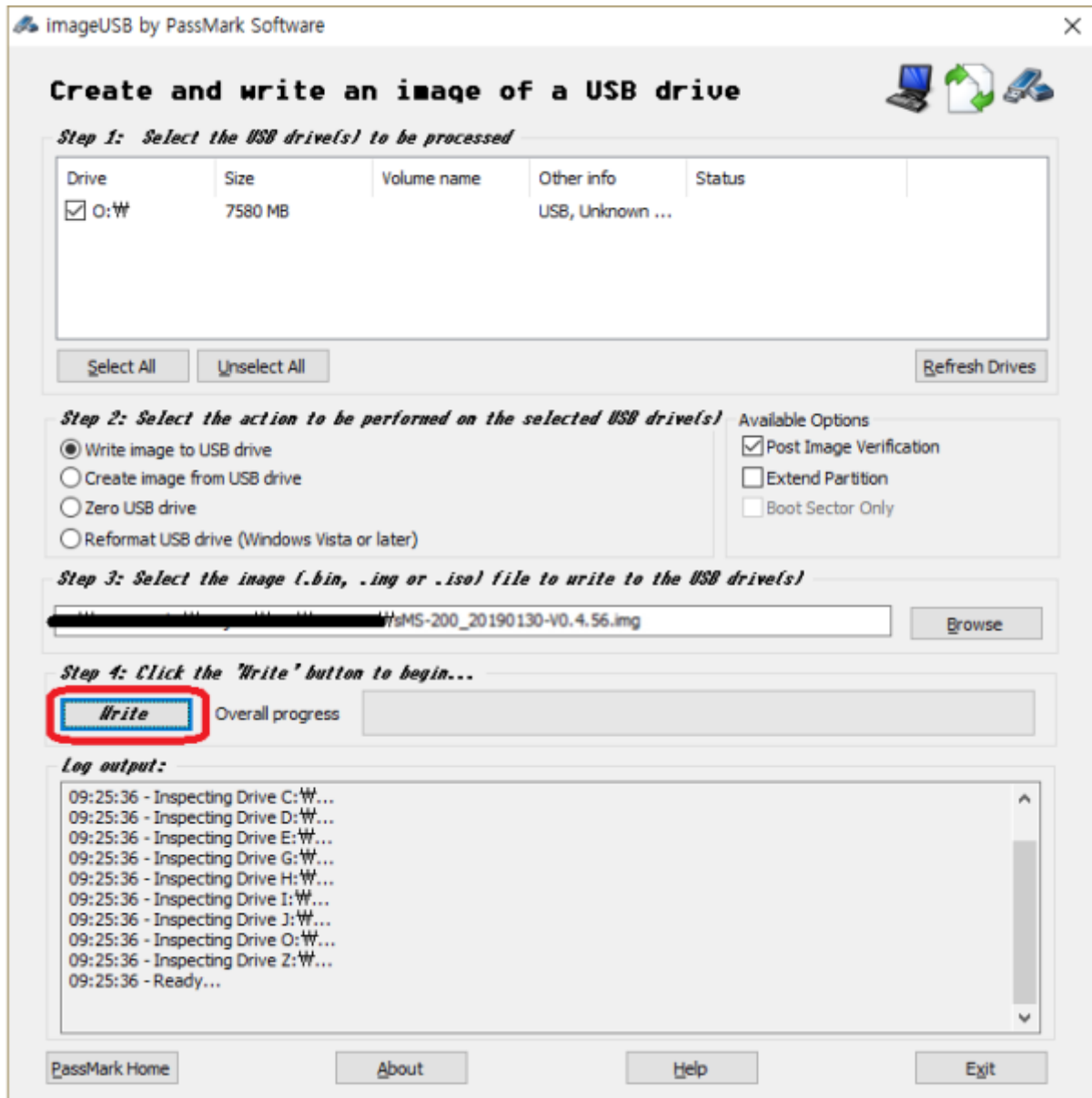
Select the new image file

Click 'Browse' button and select the downloaded image file.



Write the new image

Click 'Write' button to write the new image file to the micro SD card.



Finish

1. Insert the micro SD card back to the micro SD card slot on the rear panel of the SMS-200 or SMS-200ultra.
2. Power on the device, and check that the device works fine.

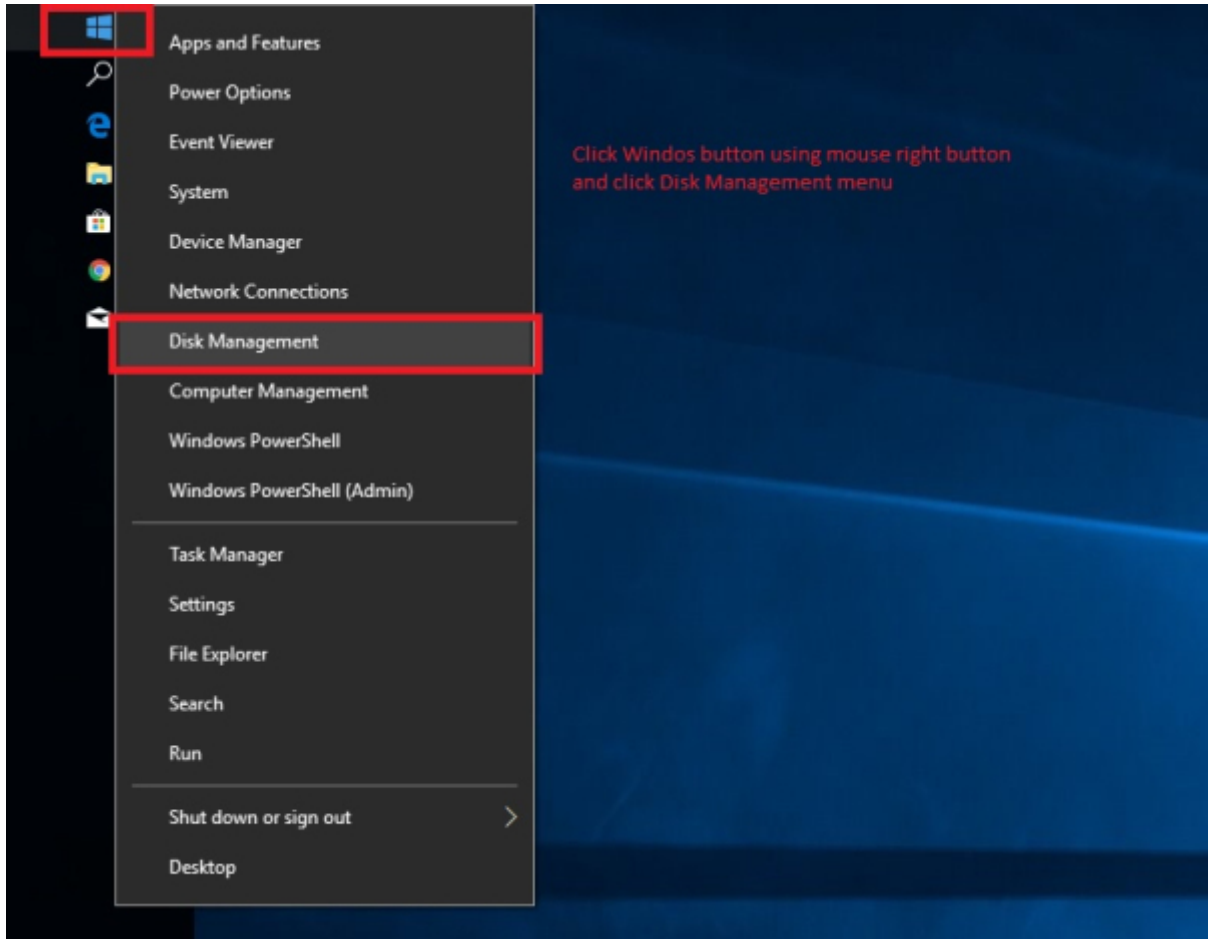
(Optional) How to format the micro SD card in Windows OS

This step is optional and only required if:

- The image writing process fails
- The micro SD card is not recognized properly
- You want to completely clean the micro SD card

If everything works properly, you can skip this step.

Please follow the steps as pictured.



The screenshot shows the Windows Disk Management console. At the top, a table lists the system's volumes. Below this, the details for Disk 0 and Disk 1 are shown. A red rectangle highlights the Disk 1 section, which includes a 286 MB primary partition, a 244 MB primary partition, a 6.88 GB primary partition, and 44 MB of unallocated space.

Volume	Layout	Type	File System	Status	Capacity	Free Spa...	% Free
(C:)	Simple	Basic	NTFS	Healthy (B...	59.45 GB	29.60 GB	50 %
(Disk 0 partition 1)	Simple	Basic		Healthy (R...	450 MB	450 MB	100 %
(Disk 0 partition 2)	Simple	Basic		Healthy (E...	99 MB	99 MB	100 %
(Disk 1 partition 1)	Simple	Basic		Healthy (P...	286 MB	286 MB	100 %
(Disk 1 partition 2)	Simple	Basic		Healthy (P...	244 MB	244 MB	100 %
(Disk 1 partition 3)	Simple	Basic		Healthy (P...	6.88 GB	6.88 GB	100 %

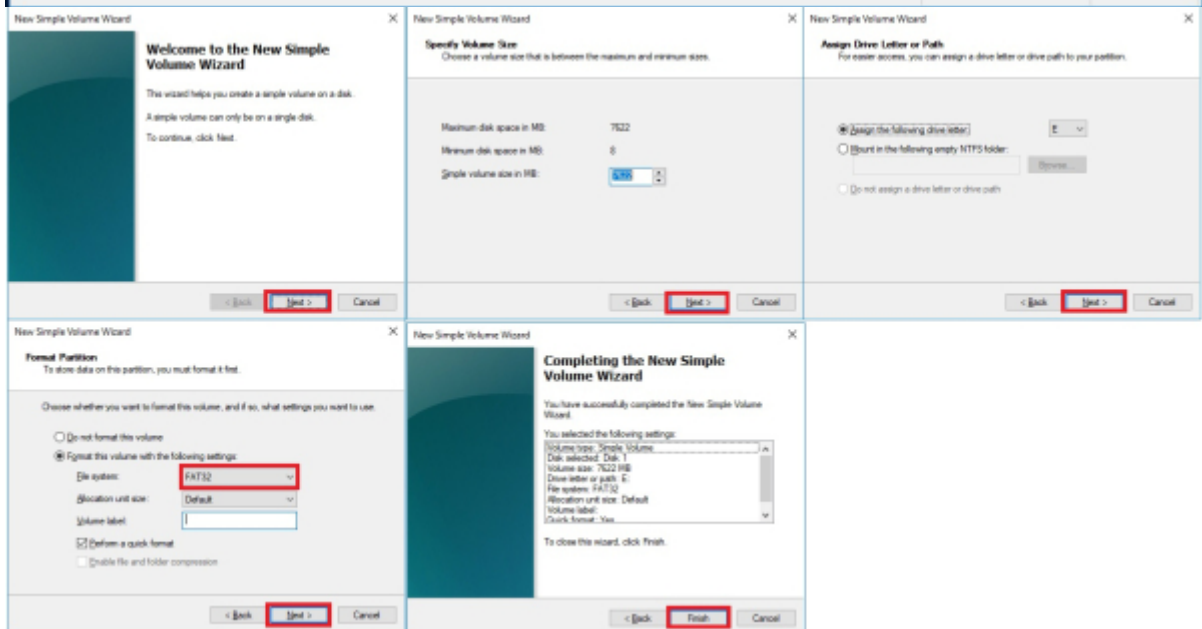
Disk	Capacity	Partitions
Disk 0 Basic 59.98 GB Online	450 MB Healthy (Recovery Partition)	99 MB Healthy (EFI System Partition) 59.45 GB NTFS Healthy (Boot, Page File, Crash Dump, Primary Partition)
Disk 1 Removable 7.45 GB Online	286 MB Healthy (Primary Partition)	244 MB Healthy (Primary Partition) 6.88 GB Healthy (Primary Partition) 44 MB Unallocated

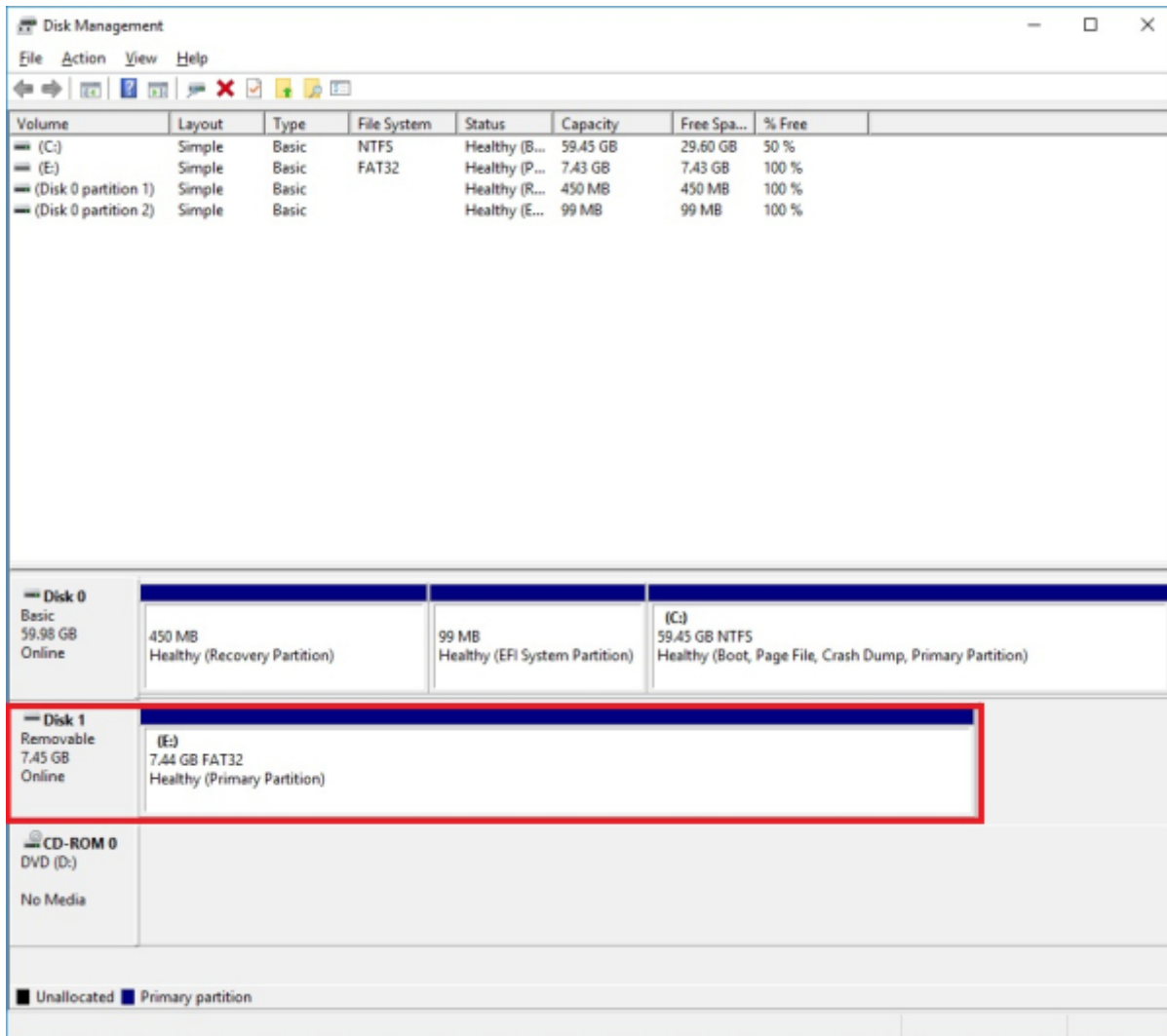
Legend: ■ Unallocated ■ Primary partition

The screenshot shows the Windows Disk Management utility. At the top, a table lists the system's volumes:

Volume	Layout	Type	File System	Status	Capacity	Free Spa...	% Free
(C:)			NTFS	Healthy (B...	59.45 GB	29.60 GB	50 %
(Disk 0 partition 1)	Simple	Basic		Healthy (R...	450 MB	450 MB	100 %
(Disk 0 partition 2)	Simple	Basic		Healthy (E...	99 MB	99 MB	100 %
(Disk 1 partition 1)	Simple	Basic		Healthy (P...	286 MB	286 MB	100 %
(Disk 1 partition 2)	Simple	Basic		Healthy (P...	244 MB	244 MB	100 %
(Disk 1 partition 3)	Simple	Basic		Healthy (P...	6.88 GB	6.88 GB	100 %

Below the table, the detailed view for Disk 1 is shown. It contains four partitions: a 286 MB Primary Partition, a 244 MB Primary Partition, a 6.88 GB Primary Partition, and a 44 MB Unallocated space. A context menu is open over the 6.88 GB partition, with the 'Delete Volume...' option highlighted in red. A red text box on the right side of the screenshot reads: 'Click right button of mouse Delete Volume 3 patitions of Disk1(MSD CARD) It will be changed to 1 of unallocated disk'.





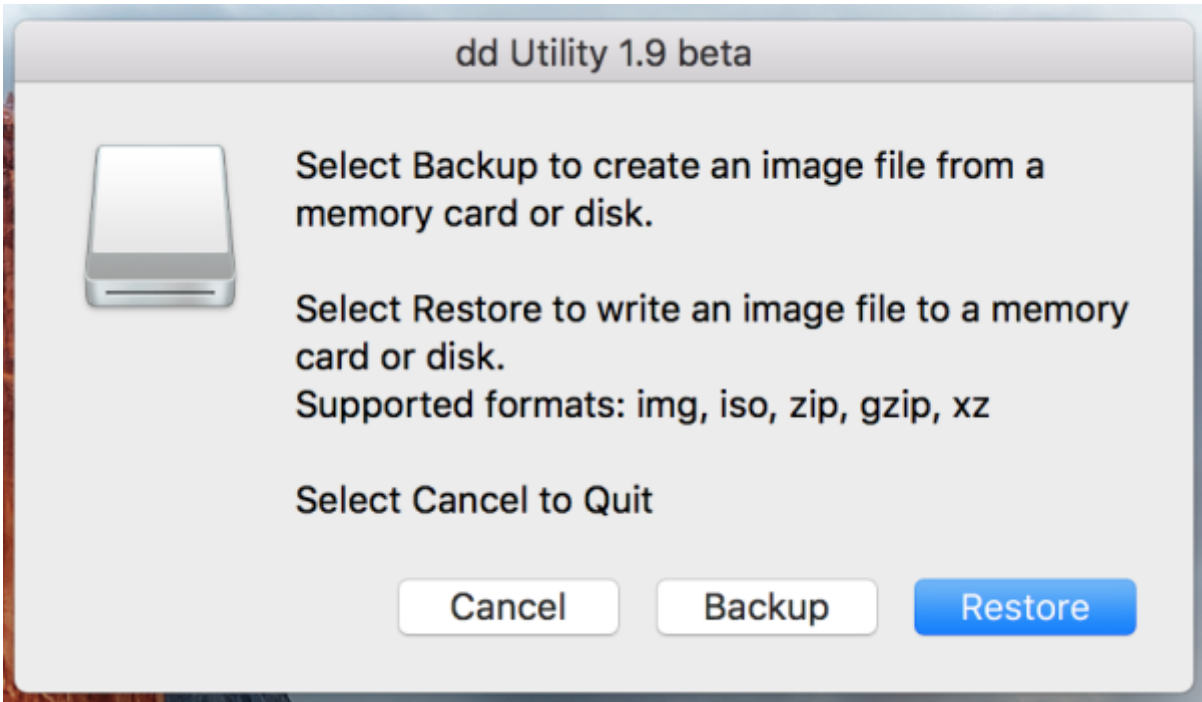
macOS

Preparation

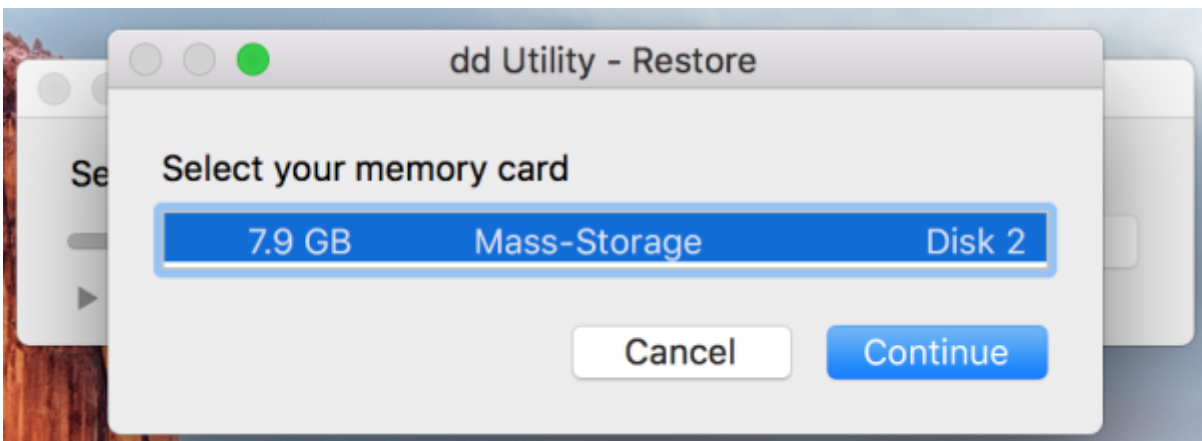
1. Download the [new micro SD card image](#). Please note that the image file is quite big.
2. Download the dd-utility from [here](#) or [github](#). And install it.
3. Eject the micro SD card from the rear panel of the SMS-200 and insert it into a PC's USB port using a micro SD card reader.

Start Restore

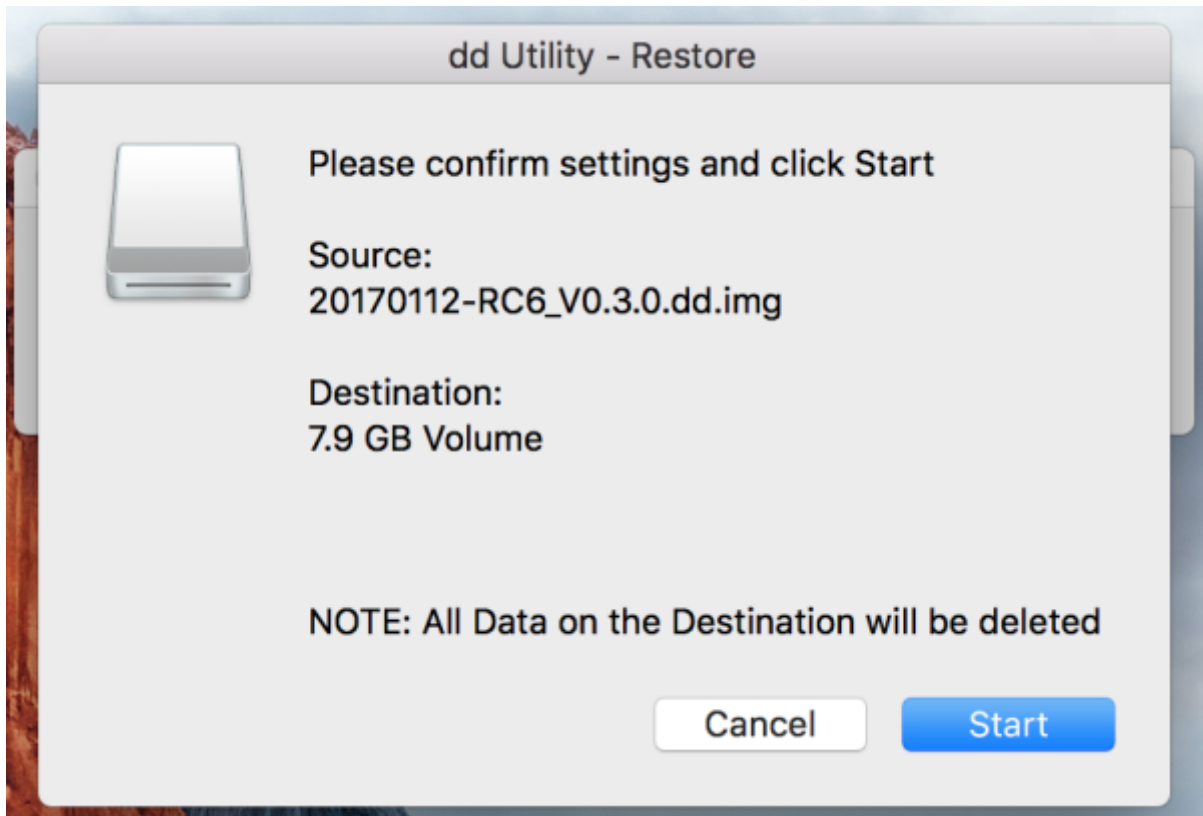
Click 'Restore' and select the downloaded .img file.



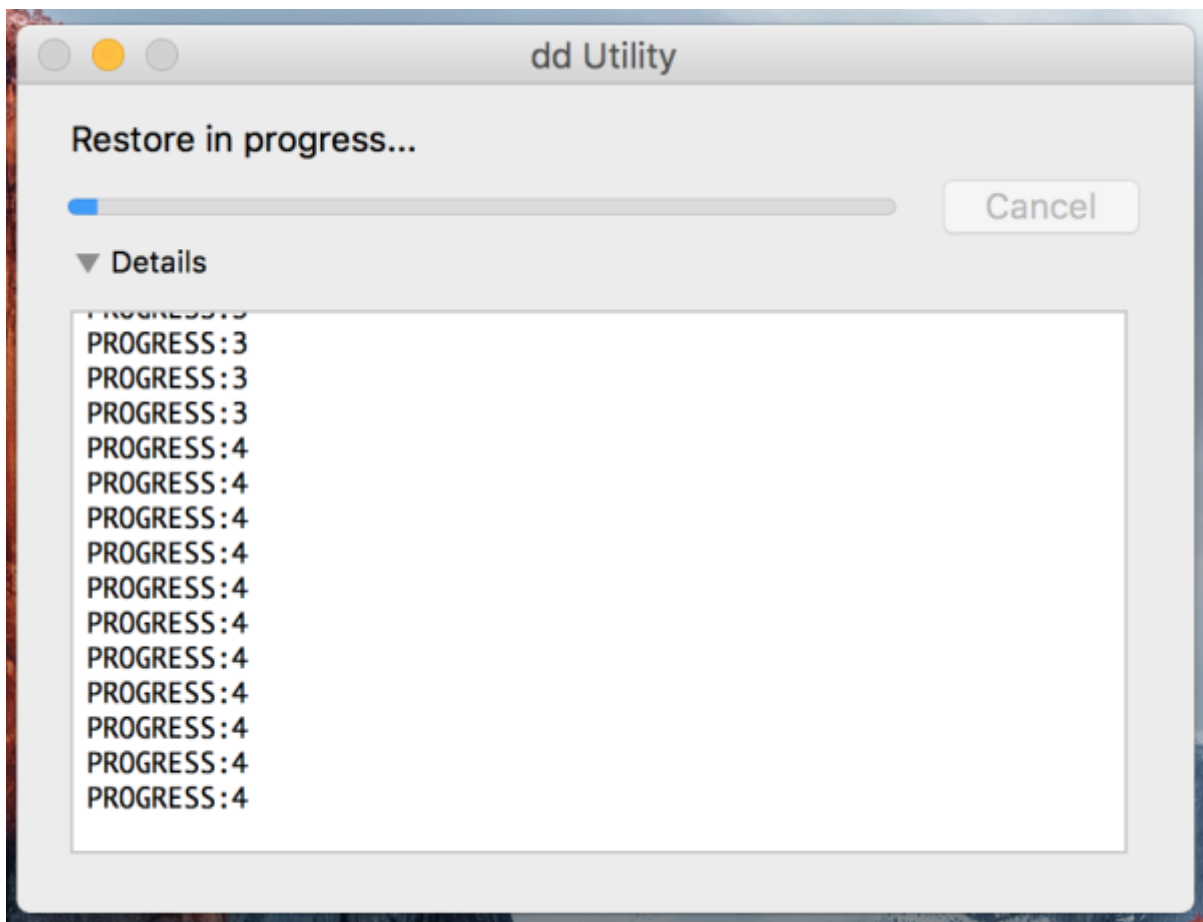
Select mSD card.



And start.



You can see the progress.



Finish

After finishing the process above, insert the mSD card to the mSD card slot of the SMS-200 or SMS-200ultra rear panel.

You can also use command-line by terminal instead of dd utility. Refer to [here](#).

From:

<https://www.docs.sotm-audio.com/> - **SOTM docs**

Permanent link:

https://www.docs.sotm-audio.com/doku.php?id=en:eunhasu:burn_sdcard_image

Last update: **2026/04/20 22:10**

