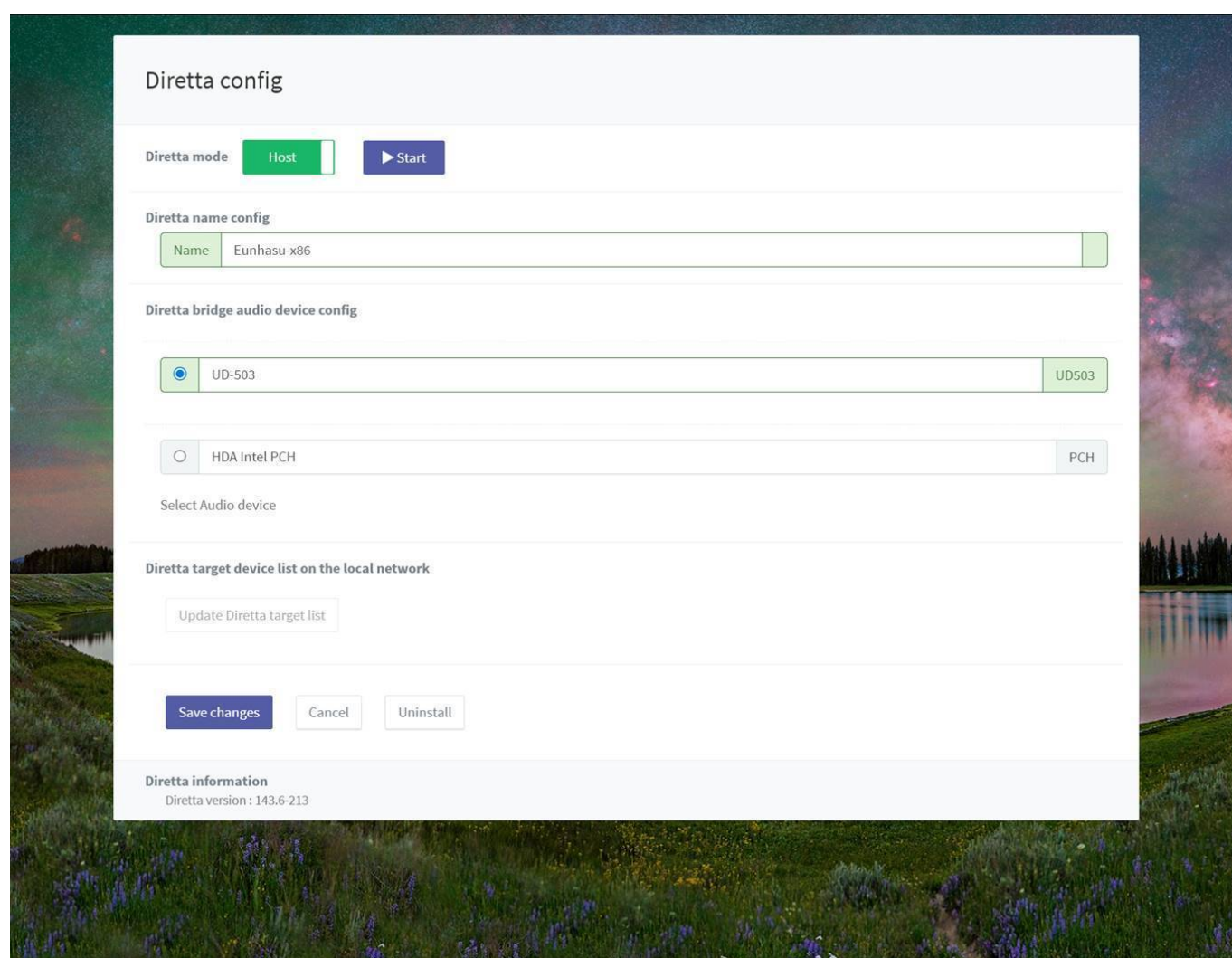


About Diretta

Diretta is a network audio protocol developed specifically for high-end audio devices.

The Diretta **host** device displays the audio device of the Diretta **target** device as a virtual audio device. By selecting and playing music on the host device, the music being played on the Diretta host device is output through the Diretta target device. While many music playback apps can already stream music over the network, other players operate using their own communication protocols. In contrast, Diretta allows all music player apps to stream music because the host device is set as a virtual audio device.

From the Eunhasu OS V0.5.8, the Diretta configure page in the Eunhau Web GUI is displayed as shown below. On this page, you can install Diretta and set up devices as the Diretta host device or target device.

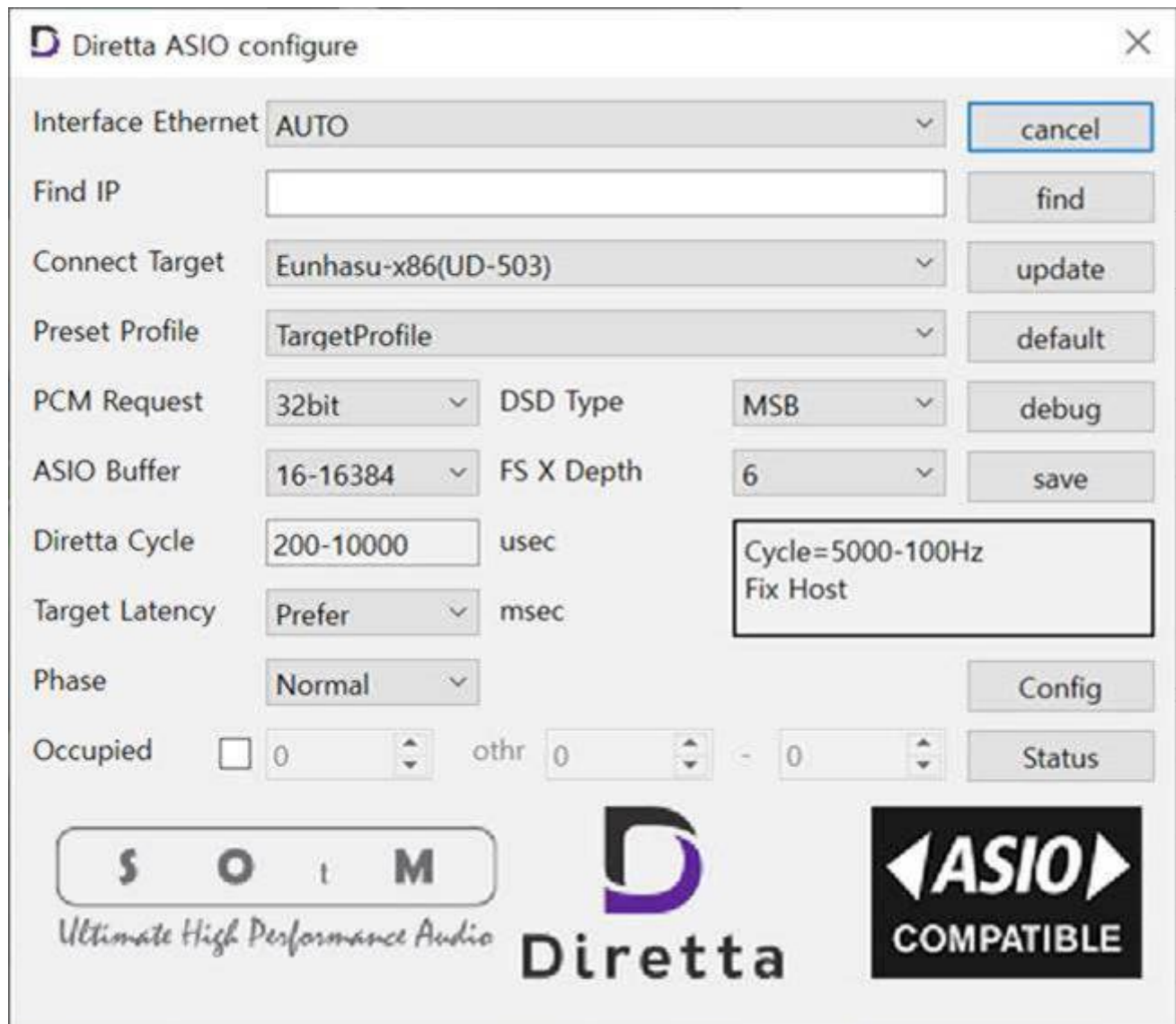


The screenshot shows the 'Diretta config' web interface. At the top, there's a 'Diretta mode' section with a green 'Host' button and a blue 'Start' button. Below that is the 'Diretta name config' section with a text input field containing 'Eunhasu-x86'. The 'Diretta bridge audio device config' section has two radio button options: 'UD-503' (selected) and 'HDA Intel PCH'. Below these is a 'Select Audio device' label. The 'Diretta target device list on the local network' section has an 'Update Diretta target list' button. At the bottom are 'Save changes', 'Cancel', and 'Uninstall' buttons. A footer section shows 'Diretta information' with 'Diretta version : 143.6-213'.

By setting one device as the Diretta target device and another as the Diretta host device, and then running Diretta, you will see the configured audio device appear on the target device once the Diretta target list is updated. After that, you can select the connected Diretta target audio device through the Diretta host functionality in music player apps like Roon, MPD, and LMS. After saving the settings, music will play through the connected Diretta target device.

To use a Windows PC as the Diretta host device, you need to first download and install the Diretta

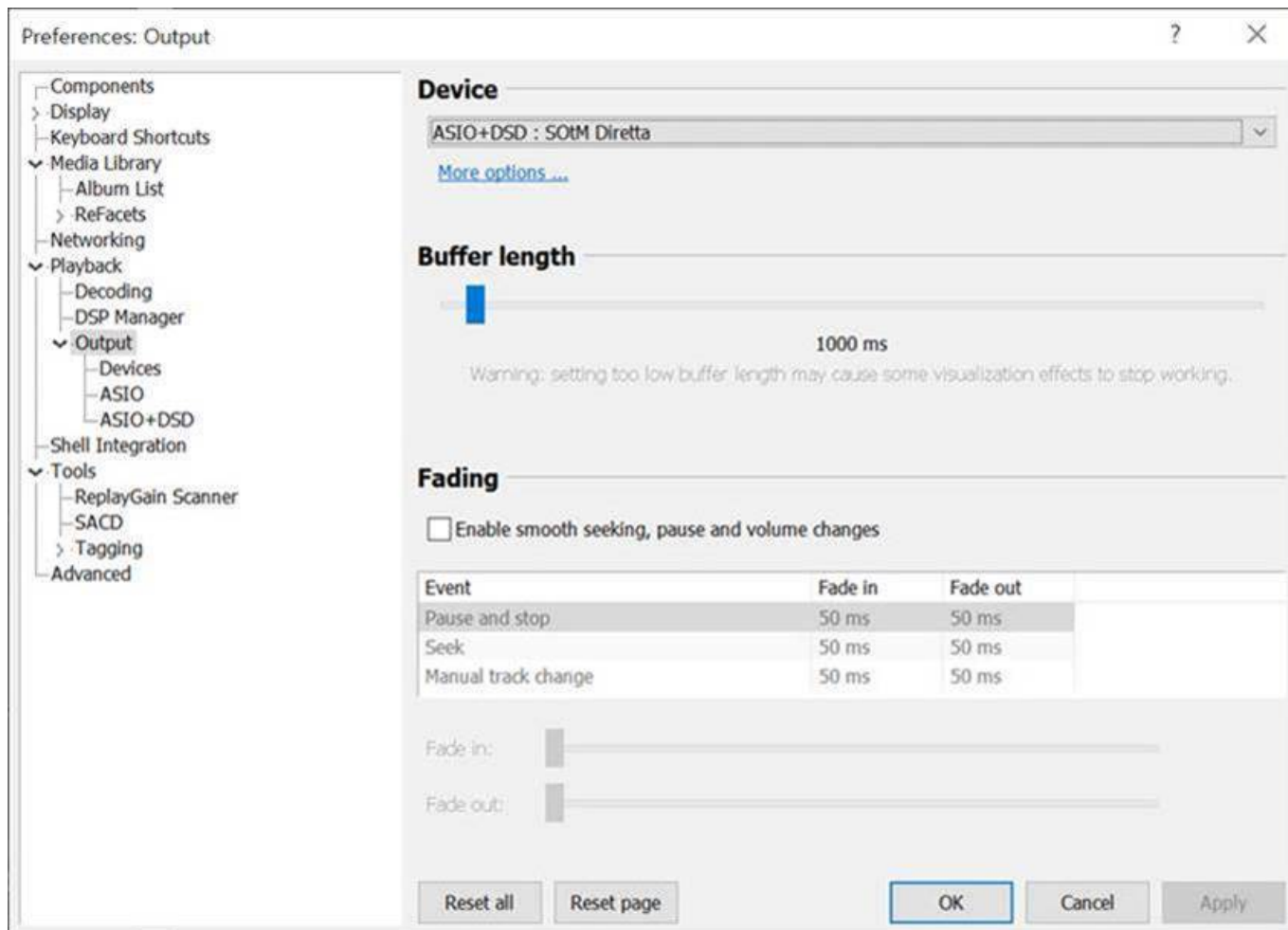
AUDIO driver from the SOTM website, then install a music player that supports ASIO audio output, such as Foobar2000. After installation, run SOTM ASIO configure on the PC, click the 'Find' button, select the Diretta target device from the Connect Target list, and save the settings. Then, in the music player, set the output to SOTM Diretta ASIO. After this setup, music will play through the Diretta target device.



The image shows the 'Diretta ASIO configure' window. It has a title bar with a close button. The settings are organized into several rows:

- Interface Ethernet:** A dropdown menu set to 'AUTO'. To its right is a 'cancel' button.
- Find IP:** An empty text input field with a 'find' button to its right.
- Connect Target:** A dropdown menu set to 'Eunhasu-x86(UD-503)' with an 'update' button to its right.
- Preset Profile:** A dropdown menu set to 'TargetProfile' with a 'default' button to its right.
- PCM Request:** A dropdown menu set to '32bit'.
- DSD Type:** A dropdown menu set to 'MSB' with a 'debug' button to its right.
- ASIO Buffer:** A dropdown menu set to '16-16384'.
- FS X Depth:** A dropdown menu set to '6' with a 'save' button to its right.
- Diretta Cycle:** A text input field containing '200-10000' followed by 'usec'.
- Target Latency:** A dropdown menu set to 'Prefer' followed by 'msec'.
- Phase:** A dropdown menu set to 'Normal'.
- Occupied:** A checkbox followed by a spinner set to '0', then 'othr' followed by a spinner set to '0', then a minus sign followed by a spinner set to '0', and finally a 'Status' button.

At the bottom of the window, there are three logos: 'SOTM Ultimate High Performance Audio', the 'Diretta' logo, and the 'ASIO COMPATIBLE' logo.

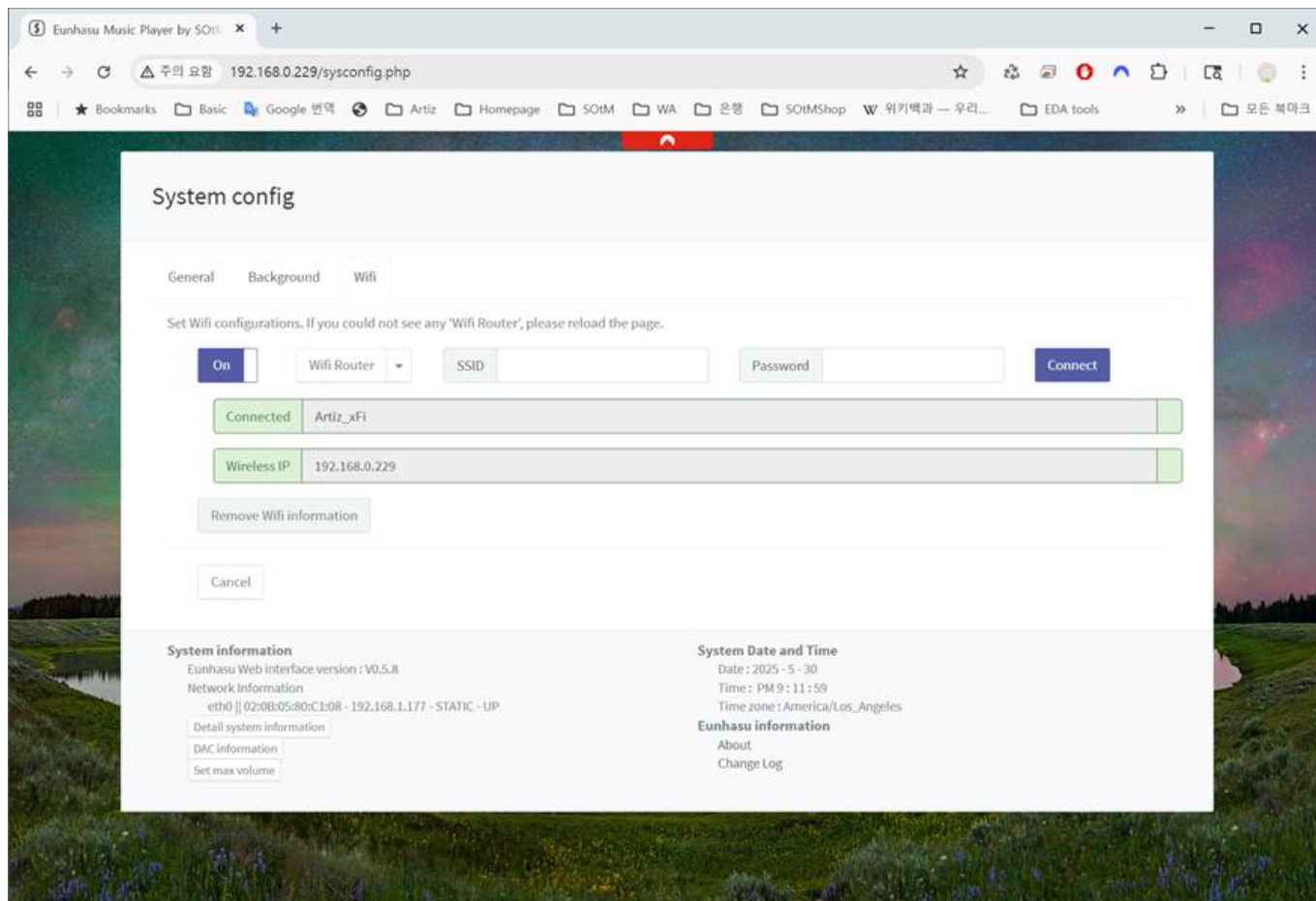


As many of you may already know, Diretta is a network audio protocol specially designed for high-quality music playback. This protocol sends music data in small, consistent packets, which allows for lower current usage compared to protocols that send large amounts of data at once. As a result, it reduces internal noise in audio devices and provides superior sound quality.

How to Set Up a Direct Ethernet Connection Between Diretta Host and Target

It could be available from the Eunhasu firmware version no.0.5.9.

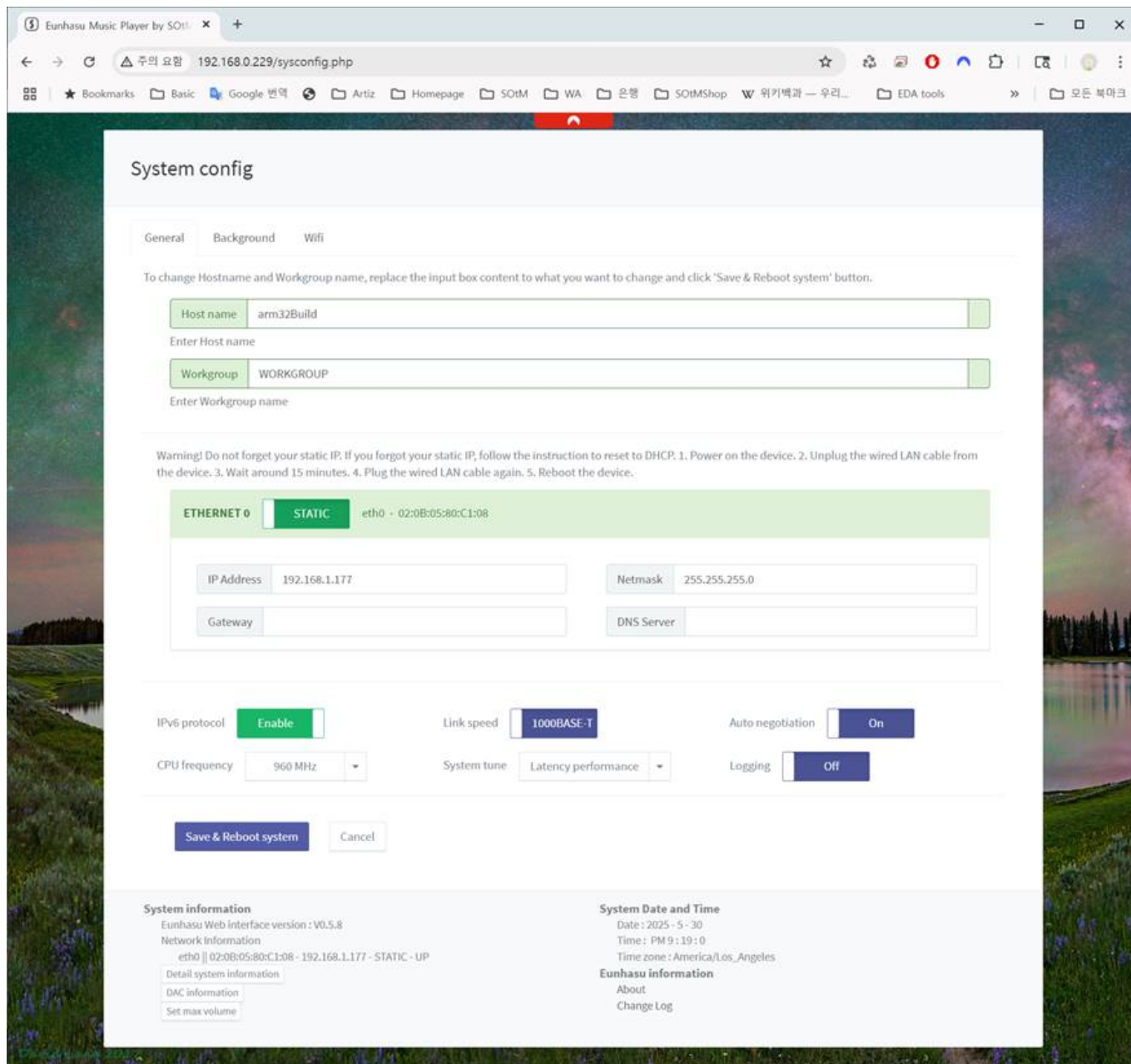
1. Prepare an *Ethernet crossover cable* and a USB Ethernet dongle or USB Wi-Fi dongle. (Note: You can order a high-end Ethernet crossover cable directly from SotM.)
2. Upgrade both the Diretta Host and Target devices to Eunhasu version 0.5.9.
3. If your device has only one Ethernet port, connect the USB Ethernet or USB Wi-Fi dongle.
4. Open the Eunhasu web GUI on the Diretta Target device and go to the System Config page.
5. If using a USB Wi-Fi dongle, connect the device to your network via Wi-Fi.



6. Access the Eunhasu web interface through the Wi-Fi or USB Ethernet port you've connected.

7. Set a static IP address on the Ethernet port that will be used for the direct connection to the Diretta Host device. Use an IP address like `xxx.xxx.xxx.nnn`. (Note: The first three sections of the IP address—`xxx.xxx.xxx`—must match the Diretta Host's IP address. The last number `nnn` must be different from the Host's.)

Netmask: 255.255.255.0 Gateway and DNS Server: Leave both fields empty



System config

General Background Wifi

To change Hostname and Workgroup name, replace the input box content to what you want to change and click 'Save & Reboot system' button.

Host name arm32Build
Enter Host name

Workgroup WORKGROUP
Enter Workgroup name

Warning! Do not forget your static IP. If you forgot your static IP, follow the instruction to reset to DHCP. 1. Power on the device. 2. Unplug the wired LAN cable from the device. 3. Wait around 15 minutes. 4. Plug the wired LAN cable again. 5. Reboot the device.

ETHERNET 0 **STATIC** eth0 - 02:0B:05:80:C1:08

IP Address 192.168.1.177 Netmask 255.255.255.0
Gateway DNS Server

IPv6 protocol **Enable** Link speed **1000BASE-T** Auto negotiation **On**
CPU frequency 960 MHz System tune Latency performance Logging **Off**

Save & Reboot system Cancel

System information
Eunhasu Web interface version : V0.5.8
Network information
eth0 || 02:0B:05:80:C1:08 - 192.168.1.177 - STATIC - UP
Detail system information
DAC information
Set max volume

System Date and Time
Date : 2025 - 5 - 30
Time : PM 9 : 19 : 0
Time zone : America/Los_Angeles
Eunhasu information
About
Change Log

8. Click 'Save & Reboot System'.

9. Once rebooted, open the Directa Config page on the Target device.

Set Directa mode to Target. Select the Directa Target audio device. Click the Save Changes button. (Note: You do not need to configure the Host Ethernet port on the Target device.) 10. Click the 'Start' button to activate Directa Target mode.

Diretta config

Diretta mode

Diretta name config

Name Eunhasu-a7

Diretta target audio device config

UD-503 UD503

Select Audio device for Diretta Target

Diretta Host Ethernet port config

eth0

Select Ethernet port for Diretta Host

Diretta target device list on the local network

Update Diretta target list

Save changes Cancel Uninstall

Diretta information

Diretta version : 143.6-213

11. On the Diretta Host device, open the Eunhasu web interface and go to the System Config page.

12. Set a static IP address on the Ethernet port that will be connected directly to the Diretta Target. Use an IP address like `xxx.xxx.xxx.nnn`. (Note: The first three sections of the IP address—`xxx.xxx.xxx`—must match the Diretta Target's IP address. The last number `nnn` must be different from the Target's.)*

Netmask: 255.255.255.0 Gateway and DNS Server: Leave both fields empty

System config

General Background Wifi

To change Hostname and Workgroup name, replace the input box content to what you want to change and click 'Save & Reboot system' button.

Host name: x86Build
Enter Host name

Workgroup: WORKGROUP
Enter Workgroup name

Warning! Do not forget your static IP. If you forgot your static IP, follow the instruction to reset to DHCP. 1. Power on the device. 2. Unplug the wired LAN cable from the device. 3. Wait around 15 minutes. 4. Plug the wired LAN cable again. 5. Reboot the device.

ETHERNET 0 **STATIC** enp0s20u2 - 00:E0:4A:68:2D:ED

IP Address: 192.168.1.80 Netmask: 255.255.255.0
Gateway: DNS Server:

ETHERNET 1 **DHCP** enp3s0 - 00:22:4D:B8:0C:5C

IP Address: 192.168.0.80 Netmask: 255.255.255.0
Gateway: 192.168.0.1 DNS Server: 192.168.0.1

IPv6 protocol: **Enable** Link speed: **1000BASE-T** Auto negotiation: **On**
CPU frequency: Performance System tune: Latency performance Logging: **Off**

Save & Reboot system **Reboot & Check disk** Cancel

System information
Eunhasu Web interface version : V0.5.9
Network Information
enp0s20u2 || 00:E0:4A:68:2D:ED - 192.168.1.80 - STATIC - UP
enp3s0 || 00:22:4D:B8:0C:5C - 192.168.0.80 - DHCP - UP
Detail system information
DAC information
Set max volume

System Date and Time
Date : 2025 - 5 - 30
Time : PM 9 : 30 : 17
Time zone : America/Los_Angeles
Eunhasu information
About
Change Log

13. Click 'Save & Reboot System'.

14. Connect the crossover Ethernet cable between the Ethernet port of the Diretta Target device and the corresponding Ethernet port on the Diretta Host device.

15. Open the Diretta Config page on the Host device.

* Set Diretta mode to Host. * Select the Ethernet port you want to use for the direct connection to the Target. * Click the Save Changes button. (Note: You do not need to select a target audio device on the Host.) (Note: If you do not select a Host Ethernet port, Diretta Host will use all available Ethernet ports.)

16. Click the 'Start' button to activate Diretta Host mode. You should now see the Diretta Target

device appear as shown below.

Diretta config

Diretta mode: ☒ Host ☐ Stop ☐ Restart

Diretta name config: Name: Eunhasu-x86

Diretta target audio device config: ☐ HDA Intel PCH ☒ DM7

Select Audio device for Diretta Target

Diretta Host Ethernet port config: ☒ enp0s20u2 ☐ enp3s0

Select Ethernet port for Diretta Host

Diretta target device list on the local network:

Eunhasu-a7:UD-503 Diretta21F1

Diretta information
Diretta version : 143.6-213

17. Go to the Music Player Config page, select the Diretta Target device as the audio output device, and click 'Save Changes'. This will return you to the Eunhasu web GUI main page.

18. Start the music player and open its control app on your smart device.

19. Enjoy the Soul Of the Music.

From:

<https://www.docs.sotm-audio.com/> - **SotM docs**

Permanent link:

<https://www.docs.sotm-audio.com/doku.php?id=diretta>



Last update: **2025/07/23 06:25**